

CAMLOCKS



Index

	304 Stainless Steel 304-A..... 36		Aluminum AL-A..... 12
	304 Stainless Steel 304-B..... 37		Aluminum AL-B..... 13
	304 Stainless Steel 304-C..... 38		Aluminum AL-C..... 14
	304 Stainless Steel 304-D..... 39		Aluminum AL-D..... 15
	304 Stainless Steel 304-E 40		Aluminum AL-E 16
	304 Stainless Steel 304-F 41		Aluminum AL-F 17
	304 Stainless Steel 304-DC..... 42		Aluminum AL-DC..... 18
	304 Stainless Steel 304-DP..... 43		Aluminum AL-DP..... 19
	316 Stainless Steel SS-A 28		Brass BR-A..... 20
	316 Stainless Steel SS-B 29		Brass BR-B..... 21
	316 Stainless Steel SS-C 30		Brass BR-C..... 22
	316 Stainless Steel SS-D 31		Brass BR-D..... 23
	316 Stainless Steel SS-E 32		Brass BR-E 24
	316 Stainless Steel SS-F 33		Brass BR-F 25
	316 Stainless Steel SS-DC..... 34		Brass BR-DC 26
	316 Stainless Steel SS-DP..... 35		Brass BR-DP..... 27

Because we continually examine ways to improve our products, we reserve the right to alter specifications or discontinue products without prior notice.



Index



Polypropylene PPA 44



Polypropylene PPB 45



Polypropylene PPC 46



Polypropylene PPD 47



Polypropylene PPE 48



Polypropylene PPF 49



Polypropylene PPDC 50



Polypropylene PPDP 51



Nylon GRA 52



Nylon GRB 53



Nylon GRC 54



Nylon GRD 55



Nylon GRE 56



Nylon GRF 57



Nylon GRDC 58



Nylon GRDP 59



EZ-Seal™ AL-CLF 60



EZ-Seal™ AL-ELF 61



Ductile Iron DI-C 62



Ductile Iron DI-E 63



ALSH Aluminum ALSH-B 64



ALSH Aluminum ALSH-C 65



ALSH Aluminum ALSH-D 66



ALSH Aluminum ALSH-DC 67



Weld Aluminum BW-ALF 68



Weld Aluminum BW-ALB 69



Weld Aluminum SW-ALA 70



Weld Aluminum SW-ALD 71



Weld 316 Stainless BW-SSF 72



Weld 316 Stainless BW-SSB 73



Weld 316 Stainless SW-SSA 74



Weld 316 Stainless SW-SSD 75

Because we continually examine ways to improve our products, we reserve the right to alter specifications or discontinue products without prior notice.

Tri-Couple™

The Three-in-One Coupling Solution

One Coupling for Ferrules, Sleeves, & Clamps!

Premium Quality Fitting Design!

Lower Inventory Costs!

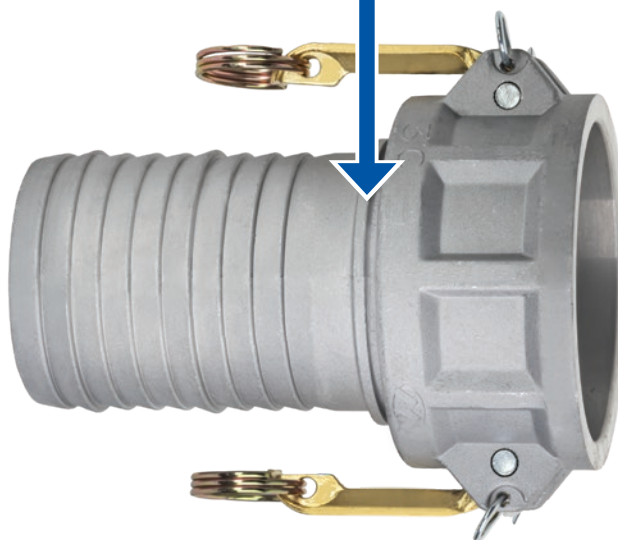


Because we continually examine ways to improve our products, we reserve the right to alter specifications or discontinue products without prior notice.



Kuriyama's
Tri-Couple™
System

3 IN 1



Look for this icon → 
It designates a Tri-Couple fitting in product tables

FEATURES & BENEFITS

- Unique Tri-Couple™ fitting design eliminates the need for separate fittings when using clamps, sleeves or ferrules.
- Same great quality Kuriyama couplings redesigned for maximum inventory control.
- Available in Aluminum, ALSH, Brass, 316 Stainless Steel, 304 Stainless Steel, and Ductile Iron.
- Tri-Couple design also available on our interlocking crimp nipples.
- Select sizes available up to 6".

Because we continually examine ways to improve our products, we reserve the right to alter specifications or discontinue products without prior notice.



AL-A Series (Aluminum Part A)

Male Coupler X Female NPT

GENERAL APPLICATIONS

Kuriyama Camlock Couplings are intended for use in many industrial applications. To learn more, please refer to pages 296-297 in this catalog.

FEATURES AND ADVANTAGES

- High quality design made to withstand rigorous applications found in industrial markets.
- Kuriyama offers two 8" coupling styles in aluminum.*
- Aluminum alloy specially designed for high tensile strength and impact resistance.

MATERIAL SPECIFICATIONS

- ASTM aluminum alloy.
- Complies with Mil-Spec A-A-59326 for interchangeability in relevant sizes.

VIEW ONLINE



SCAN FOR INFO
or visit
KOA.link/AL-A

Part Number	Coupler Size (in)	Thread Size NPT (in)	PSI Rating at 70°F	ASTM Specification	Weight Each (lbs)	Standard Carton
AL-A050	1/2	1/2	250	B211 Grade 6063	0.10	100
AL-A075	3/4	3/4	250	B85 Grade 383	0.13	50
AL-A100	1	1	250	B85 Grade 383	0.12	70
AL-A125	1 1/4	1 1/4	250	B108-92 356	0.20	40
AL-A150	1 1/2	1 1/2	250	B85 Grade 383	0.28	30
AL-A200	2	2	250	B85 Grade 383	0.38	40
AL-A2015	2	1 1/2	250	B26, Grade 713	0.44	40
AL-A2030	2	3	250	B26, Grade 713	0.75	24
AL-A250	2 1/2	2 1/2	150	B85 Grade 383	0.58	50
AL-A300	3	3	150	B85 Grade 383	0.70	35
AL-A3020	3	2	150	B26, Grade 713	0.88	36
AL-A3040	3	4	150	B26, Grade 713	1.37	18
AL-A400	4	4	150	B85 Grade 383	1.58	20
AL-A4030	4	3	150	B26, Grade 713	1.61	12
AL-A500	5	5	75	B108-92 356	1.74	4
AL-A600	6	6	75	B85 Grade 383	2.95	15
AL-A800*	8	8	50	B108-92 356	7.58	2
AL-A1000	10	10	50	B26, Grade 713	9.88	2
HDAL-A801*	8	8	50	B26, Grade 713	9.48	2

* DETERMINING 8" COUPLING STYLE

To determine which version you need, please measure the outside diameter of the male coupling. If the measurement is less than 9" it is our **AL-A800**. If the measurement is more than 9" it is our **HDAL-A801**.

Because we continually examine ways to improve our products, we reserve the right to alter specifications or discontinue products without prior notice.



AL-B Series (Aluminum Part B)

Female Coupler X Male NPT

GENERAL APPLICATIONS

Kuriyama Camlock Couplings are intended for use in many industrial applications. To learn more, please refer to pages 296-297 in this catalog.

FEATURES AND ADVANTAGES

- High quality design to withstand rigorous applications found in industrial markets.
- Kuriyama offers two 8" coupling styles in aluminum.*
- Aluminum alloy specially designed for high tensile strength and impact resistance.
- Supplied with forged brass handles which results in less wear on connecting parts.
- 8" & 10" sizes supplied with four brass handles.

VIEW ONLINE



SCAN FOR INFO
or visit
[KOA.link/AL-B](https://koya.link/AL-B)

MATERIAL SPECIFICATIONS

- ASTM aluminum alloy.
- Complies with Mil-Spec A-A-59326 for interchangeability in relevant sizes.
- Forged brass handles.
- Zinc-plated carbon steel handle pins, pull rings and safety clips.
- Buna-N gasket included.

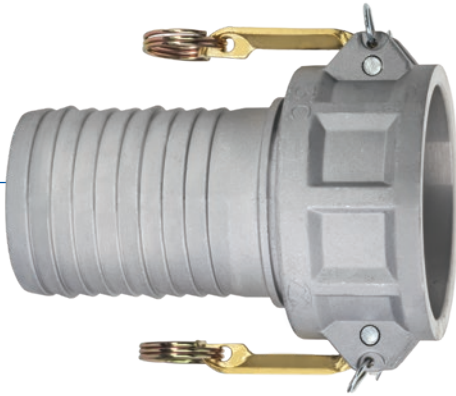
Part Number	Coupler Size (in)	Thread Size NPT (in)	PSI Rating at 70°F	ASTM Specification	Weight Each (lbs)	Standard Carton
AL-B050	1/2	1/2	250	B108-92 356	0.18	100
AL-B075	3/4	3/4	250	B85 Grade 383	0.24	50
AL-B100	1	1	250	B85 Grade 383	0.36	30
AL-B125	1 1/4	1 1/4	250	B108-92 356	0.62	45
AL-B150	1 1/2	1 1/2	250	B85 Grade 383	0.70	30
AL-B200	2	2	250	B85 Grade 383	0.86	50
AL-B2015	2	1 1/2	250	B85 Grade 383	0.84	24
AL-B2030	2	3	250	B85 Grade 383	1.43	12
AL-B250	2 1/2	2 1/2	150	B85 Grade 383	1.02	40
AL-B300	3	3	150	B85 Grade 383	1.56	25
AL-B3020	3	2	150	B85 Grade 383	1.57	12
AL-B3040	3	4	150	B85 Grade 383	2.45	18
AL-B400	4	4	150	B85 Grade 383	2.42	25
AL-B4030	4	3	150	B85 Grade 383	2.31	10
AL-B500	5	5	75	B108-92 356	3.34	4
AL-B600	6	6	75	B85 Grade 383	4.98	10
AL-B800*	8	8	50	B108-92 356	8.03	2
AL-B1000	10	10	50	B26, Grade 713	12.13	2
HDAL-B801*	8	8	50	B26, Grade 713	10.54	2



DETERMINING 8" COUPLING STYLE

To determine which version you need, please measure the outside diameter of the male coupling. If the measurement is less than 9" it is our **AL-B800**. If the measurement is more than 9" it is our **HDAL-B801**.

Because we continually examine ways to improve our products, we reserve the right to alter specifications or discontinue products without prior notice.



AL-C Series (Aluminum Part C)

Female Coupler X Hose Shank

GENERAL APPLICATIONS

Kuriyama Camlock Couplings are intended for use in many industrial applications. To learn more, please refer to pages 296-297 in this catalog.

FEATURES AND ADVANTAGES

- High quality design made to withstand rigorous applications found in industrial markets.
- Tri-Couple™ design available in 1 1/2", 2", 2 1/2", 3", 4", 6" sizes.
- Hose shanks especially designed for easy assembly with Tigerflex™ type hoses.
- Kuriyama offers two 8" coupling styles in aluminum.*
- Aluminum alloy specially designed for high tensile strength and impact resistance.
- Supplied with forged brass handles which results in less wear on connecting parts.
- 8" & 10" sizes supplied with four brass handles.

VIEW ONLINE









SCAN FOR INFO
or visit
KOA.link/AL-C



MATERIAL SPECIFICATIONS

- ASTM aluminum alloy.
- Complies with Mil-Spec A-A-59326 for interchangeability in relevant sizes.
- Forged brass handles.
- Zinc-plated carbon steel handle pins, pull rings and safety clips.
- Buna-N gasket included.

Part Number	Coupler Size (in)	Shank Size (in)	PSI Rating at 70°F	ASTM Specification	Weight Each (lbs)	Standard Carton
AL-C050	1/2	1/2	250	B108-92 356	0.20	100
AL-C075	3/4	3/4	250	B85 Grade 383	0.26	50
AL-C100	1	1	250	B85 Grade 383	0.42	60
AL-C125	1 1/4	1 1/4	250	B108-92 356	0.68	35
 AL-C150	1 1/2	1 1/2	250	B85 Grade 383	0.74	30
 AL-C200	2	2	250	B85 Grade 383	0.98	40
AL-C2015	2	1 1/2	250	B85 Grade 383	0.93	40
 AL-C250	2 1/2	2 1/2	150	B85 Grade 383	1.28	30
 AL-C300	3	3	150	B85 Grade 383	2.20	15
AL-C3020	3	2	150	B85 Grade 383	1.74	9
AL-C3025	3	2 1/2	150	B85 Grade 383	1.59	9
AL-C3040	3	4	150	B85 Grade 383	2.29	6
 AL-C400	4	4	150	B85 Grade 383	3.16	15
AL-C4030	4	3	150	B85 Grade 383	2.94	8
AL-C500	5	5	75	B108-92 356	3.88	4
 AL-C600	6	6	75	B85 Grade 383	7.70	6
AL-C800*	8	8	50	B108-92 356	10.83	1
AL-C1000	10	10	50	B26, Grade 713	16.67	1
HDAL-C801*	8	8	50	B26, Grade 713	12.58	1

 Designates Tri-Couple fitting

*** DETERMINING 8" COUPLING STYLE** To determine which version you need, please measure the outside diameter of the male coupling. If the measurement is less than 9" it is our **AL-C800**. If the measurement is more than 9" it is our **HDAL-C801**.

Because we continually examine ways to improve our products, we reserve the right to alter specifications or discontinue products without prior notice.



AL-D Series (Aluminum Part D)

Female Coupler X Female NPT

GENERAL APPLICATIONS

Kuriyama Camlock Couplings are intended for use in many industrial applications. To learn more, please refer to pages 296-297 in this catalog.

FEATURES AND ADVANTAGES

- High quality design to withstand rigorous applications found in industrial markets.
- Kuriyama offers two 8" coupling styles in aluminum.*
- Aluminum alloy specially designed for high tensile strength and impact resistance.
- Supplied with forged brass handles which results in less wear on connecting parts.
- 8" & 10" sizes supplied with four brass handles.

MATERIAL SPECIFICATIONS

- ASTM aluminum alloy.
- Complies with Mil-Spec A-A-59326 for interchangeability in relevant sizes.
- Forged brass handles.
- Zinc-plated carbon steel handle pins, pull rings and safety clips.
- Buna-N gasket included.

VIEW ONLINE



SCAN FOR INFO
or visit
[KOA.link/AL-D](https://koya.link/AL-D)

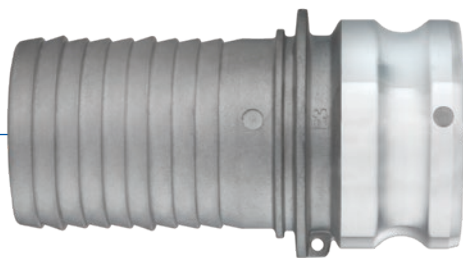
Part Number	Coupler Size (in)	Thread Size NPT (in)	PSI Rating at 70°F	ASTM Specification	Weight Each (lbs)	Standard Carton
AL-D050	1/2	1/2	250	B108-92 356	0.18	100
AL-D075	3/4	3/4	250	B85 Grade 383	0.22	50
AL-D100	1	1	250	B85 Grade 383	0.42	30
AL-D125	1 1/4	1 1/4	250	B108-92 356	0.68	40
AL-D150	1 1/2	1 1/2	250	B85 Grade 383	0.80	30
AL-D200	2	2	250	B85 Grade 383	0.92	40
AL-D2015	2	1 1/2	250	B85 Grade 383	0.88	24
AL-D250	2 1/2	2 1/2	150	B85 Grade 383	1.18	35
AL-D300	3	3	150	B85 Grade 383	1.80	20
AL-D3020	3	2	150	B85 Grade 383	1.65	12
AL-D400	4	4	150	B85 Grade 383	2.16	10
AL-D4030	4	3	150	B85 Grade 383	2.49	8
AL-D500	5	5	75	B108-92 356	3.42	4
AL-D600	6	6	75	B85 Grade 383	4.24	10
AL-D800*	8	8	50	B108-92 356	9.50	2
AL-D1000	10	10	50	B26, Grade 713	12.52	2
HDAL-D801*	8	8	50	B26, Grade 713	11.77	2



DETERMINING 8" COUPLING STYLE

To determine which version you need, please measure the outside diameter of the male coupling. If the measurement is less than 9" it is our **AL-D800**. If the measurement is more than 9" it is our **HDAL-D801**.

Because we continually examine ways to improve our products, we reserve the right to alter specifications or discontinue products without prior notice.



AL-E Series (Aluminum Part E)

Male Coupler X Hose Shank

GENERAL APPLICATIONS

Kuriyama Camlock Couplings are intended for use in many industrial applications. To learn more, please refer to pages 296-297 in this catalog.

FEATURES AND ADVANTAGES

- High quality design made to withstand rigorous applications found in industrial markets.
- Tri-Couple™ design available in 1 1/2", 2", 2 1/2", 3", 4", 6" sizes.
- Hose shanks especially designed for easy assembly with Tigerflex™ type hoses.
- Kuriyama offers two 8" coupling styles in aluminum.*
- Aluminum alloy specially designed for high tensile strength and impact resistance.

VIEW ONLINE



SCAN FOR INFO
or visit
KOA.link/AL-E



MATERIAL SPECIFICATIONS

- ASTM aluminum alloy.
- Complies with Mil-Spec A-A-59326 for interchangeability in relevant sizes.

Part Number	Coupler Size (in)	Shank Size (in)	PSI Rating at 70°F	ASTM Specification	Weight Each (lbs)	Standard Carton
AL-E050	1/2	1/2	250	B211 Grade 6063	0.08	100
AL-E075	3/4	3/4	250	B85 Grade 383	0.11	50
AL-E100	1	1	250	B85 Grade 383	0.20	50
AL-E125	1 1/4	1 1/4	250	B108-92 356	0.26	30
AL-E150	1 1/2	1 1/2	250	B85 Grade 383	0.38	40
AL-E200	2	2	250	B85 Grade 383	0.60	50
AL-E2015	2	1 1/2	250	B85 Grade 383	0.64	50
AL-E250	2 1/2	2 1/2	150	B85 Grade 383	0.86	20
AL-E300	3	3	150	B85 Grade 383	1.32	18
AL-E3020	3	2	150	B85 Grade 383	1.12	12
AL-E3025	3	2 1/2	150	B85 Grade 383	1.30	12
AL-E3040	3	4	150	B85 Grade 383	1.90	8
AL-E400	4	4	150	B85 Grade 383	2.10	20
AL-E4030	4	3	150	B85 Grade 383	2.03	18
AL-E500	5	5	75	B108-92 356	3.56	4
AL-E600	6	6	75	B85 Grade 383	6.16	6
AL-E800*	8	8	50	B108-92 356	7.73	2
AL-E1000	10	10	50	B26, Grade 713	12.90	1
HDAL-E801*	8	8	50	B26, Grade 713	9.75	2

Designates Tri-Couple fitting

* DETERMINING 8" COUPLING STYLE

To determine which version you need, please measure the outside diameter of the male coupling. If the measurement is less than 9" it is our **AL-E800**. If the measurement is more than 9" it is our **HDAL-E801**.

Because we continually examine ways to improve our products, we reserve the right to alter specifications or discontinue products without prior notice.



AL-F Series (Aluminum Part F)

Male Coupler X Male NPT

GENERAL APPLICATIONS

Kuriyama Camlock Couplings are intended for use in many industrial applications. To learn more, please refer to pages 296-297 in this catalog.

FEATURES AND ADVANTAGES

- High quality design made to withstand rigorous applications found in industrial markets.
- Kuriyama offers two 8" coupling styles in aluminum.*
- Aluminum alloy specially designed for high tensile strength and impact resistance.

MATERIAL SPECIFICATIONS

- ASTM aluminum alloy.
- Complies with Mil-Spec A-A-59326 for interchangeability in relevant sizes.

VIEW ONLINE



SCAN FOR INFO
or visit
[KOA.link/AL-F](https://koi.link/AL-F)

Part Number	Coupler Size (in)	Thread Size NPT (in)	PSI Rating at 70°F	ASTM Specification	Weight Each (lbs)	Standard Carton
AL-F050	1/2	1/2	250	B211 Grade 6063	0.14	100
AL-F075	3/4	3/4	250	B85 Grade 383	0.16	50
AL-F100	1	1	250	B85 Grade 383	0.20	45
AL-F125	1 1/4	1 1/4	250	B108-92 356	0.34	30
AL-F150	1 1/2	1 1/2	250	B85 Grade 383	0.46	50
AL-F200	2	2	250	B85 Grade 383	0.68	60
AL-F2015	2	1 1/2	250	B85 Grade 383	0.64	40
AL-F2030	2	3	250	B85 Grade 383	1.06	20
AL-F250	2 1/2	2 1/2	150	B85 Grade 383	0.96	30
AL-F300	3	3	150	B85 Grade 383	1.30	20
AL-F3020	3	2	150	B85 Grade 383	0.86	24
AL-F3040	3	4	150	B85 Grade 383	1.78	25
AL-F400	4	4	150	B85 Grade 383	2.32	25
AL-F4030	4	3	150	B85 Grade 383	1.57	18
AL-F500	5	5	75	B108-92 356	2.94	4
AL-F600	6	6	75	B85 Grade 383	3.92	10
AL-F800*	8	8	50	B108-92 356	7.94	2
AL-F1000	10	10	50	B26, Grade 713	10.58	2
HDAL-F801*	8	8	50	B26, Grade 713	9.95	2



DETERMINING 8" COUPLING STYLE

To determine which version you need, please measure the outside diameter of the male coupling. If the measurement is less than 9" it is our **AL-F800**. If the measurement is more than 9" it is our **HDAL-F801**.

Because we continually examine ways to improve our products, we reserve the right to alter specifications or discontinue products without prior notice.



AL-DC Series (Aluminum Part DC)

Dust Cap

GENERAL APPLICATIONS

Kuriyama Camlock Couplings are intended for use in many industrial applications. To learn more, please refer to pages 296-297 in this catalog.

FEATURES AND ADVANTAGES

- High quality design made to withstand rigorous applications found in industrial markets.
- Kuriyama offers two 8" coupling styles in aluminum.*
- Aluminum alloy specially designed for high tensile strength and impact resistance.
- Supplied with forged brass handles which results in less wear on connecting parts.
- 8" & 10" sizes supplied with four brass handles.

MATERIAL SPECIFICATIONS

- ASTM aluminum alloy.
- Complies with Mil-Spec A-A-59326 for interchangeability in relevant sizes.
- Forged brass handles.
- Zinc-plated carbon steel handle pins, pull rings and safety clips.
- Buna-N gasket included.

VIEW ONLINE



SCAN FOR INFO
or visit
KOA.link/AL-DC

Part Number	Size (in)	PSI Rating at 70°F	ASTM Specification	Weight Each (lbs)	Standard Carton
AL-DC050	1/2	250	B108-92 356	0.18	100
AL-DC075	3/4	250	B85 Grade 383	0.22	50
AL-DC100	1	250	B85 Grade 383	0.34	40
AL-DC125	1 1/4	250	B108-92 356	0.58	25
AL-DC150	1 1/2	250	B85 Grade 383	0.64	40
AL-DC200	2	250	B85 Grade 383	0.80	60
AL-DC250	2 1/2	150	B85 Grade 383	0.94	50
AL-DC300	3	150	B85 Grade 383	1.44	30
AL-DC400	4	150	B85 Grade 383	2.34	15
AL-DC500	5	75	B108-92 356	3.06	4
AL-DC600	6	75	B85 Grade 383	4.66	6
AL-DC800*	8	50	B108-92 356	9.04	4
AL-DC1000	10	50	B26, Grade 713	12.54	3
HDAL-DC801*	8	50	B26, Grade 713	10.63	4

*** DETERMINING 8" COUPLING STYLE** To determine which version you need, please measure the outside diameter of the male coupling. If the measurement is less than 9" it is our **AL-DC800**. If the measurement is more than 9" it is our **HDAL-DC801**.

Because we continually examine ways to improve our products, we reserve the right to alter specifications or discontinue products without prior notice.



AL-DP Series (Aluminum Part DP)

Dust Plug

GENERAL APPLICATIONS

Kuriyama Camlock Couplings are intended for use in many industrial applications. To learn more, please refer to pages 296-297 in this catalog.

FEATURES AND ADVANTAGES

- High quality design made to withstand rigorous applications found in industrial markets.
- Kuriyama offers two 8" coupling styles in aluminum.*
- Aluminum alloy specially designed for high tensile strength and impact resistance.

MATERIAL SPECIFICATIONS

- ASTM aluminum alloy.
- Complies with Mil-Spec A-A-59326 for interchangeability in relevant sizes.

VIEW ONLINE



SCAN FOR INFO
or visit
KOA.link/AL-DP

Part Number	Size (in)	PSI Rating at 70°F	ASTM Specification	Weight Each (lbs)	Standard Carton
AL-DP050	1/2	250	B211 Grade 6063	0.07	100
AL-DP075	3/4	250	B85 Grade 383	0.08	50
AL-DP100	1	250	B85 Grade 383	0.10	80
AL-DP125	1 1/4	250	B108-92 356	0.18	50
AL-DP150	1 1/2	250	B85 Grade 383	0.25	50
AL-DP200	2	250	B85 Grade 383	0.38	60
AL-DP250	2 1/2	150	B85 Grade 383	0.54	40
AL-DP300	3	150	B85 Grade 383	0.74	50
AL-DP400	4	150	B85 Grade 383	1.22	25
AL-DP500	5	75	B108-92 356	1.46	4
AL-DP600	6	75	B85 Grade 383	2.53	20
AL-DP800	8	50	B108-92 356	4.04	6
AL-DP1000	10	50	B26, Grade 713	5.36	4
HDAL-DP801*	8	50	B26, Grade 713	5.00	6



DETERMINING 8" COUPLING STYLE

To determine which version you need, please measure the outside diameter of the male coupling. If the measurement is less than 9" it is our **AL-DP800**. If the measurement is more than 9" it is our **HDAL-DP801**.

Because we continually examine ways to improve our products, we reserve the right to alter specifications or discontinue products without prior notice.



BR-A Series (Brass Part A)

Male Coupler X Female NPT

GENERAL APPLICATIONS

Kuriyama Camlock Couplings are intended for use in many industrial applications. To learn more, please refer to pages 296-297 in this catalog.

FEATURES AND ADVANTAGES

- High quality design made to withstand rigorous applications found in industrial markets.
- Brass alloy is specially designed for high tensile strength, impact resistance, and rigidity.

MATERIAL SPECIFICATIONS

- ASTM brass alloy.
- Complies with Mil-Spec A-A-59326 for interchangeability in relevant sizes.

VIEW ONLINE



SCAN FOR INFO
or visit
KOA.link/BR-A

Part Number	Size (in)	PSI Rating at 70°F	ASTM Specification	Weight Each (lbs)	Standard Carton
BR-A050	1/2	250	B584 C85700	0.15	50
BR-A075	3/4	250	B584 C85700	0.24	25
BR-A100	1	250	B584 C85700	0.34	25
BR-A125	1 1/4	250	B584 C85700	0.66	36
BR-A150	1 1/2	250	B584 C85700	0.73	25
BR-A200	2	250	B584 C85700	0.86	20
BR-A250	2 1/2	150	B584 C85700	1.61	12
BR-A300	3	150	B584 C85700	1.72	8
BR-A400	4	150	B584 C85700	3.41	6
BR-A500	5	75	B584 C85700	4.85	4
BR-A600	6	75	B584 C85700	7.27	2

Because we continually examine ways to improve our products, we reserve the right to alter specifications or discontinue products without prior notice.



BR-B Series *(Brass Part B)*

Female Coupler X Male NPT

GENERAL APPLICATIONS

Kuriyama Camlock Couplings are intended for use in many industrial applications. To learn more, please refer to pages 296-297 in this catalog.

FEATURES AND ADVANTAGES

- High quality design made to withstand rigorous applications found in industrial markets.
- Brass alloy is specially designed for high tensile strength, impact resistance, and rigidity.
- Supplied with forged brass handles which results in less wear on connecting parts.
- 8" & 10" sizes supplied with four brass handles.

MATERIAL SPECIFICATIONS

- ASTM brass alloy.
- Complies with Mil-Spec A-A-59326 for interchangeability in relevant sizes.
- Forged brass handles.
- 304 stainless steel handle pins and pull rings.
- Zinc-plated carbon steel safety clips.
- Buna-N gasket included.

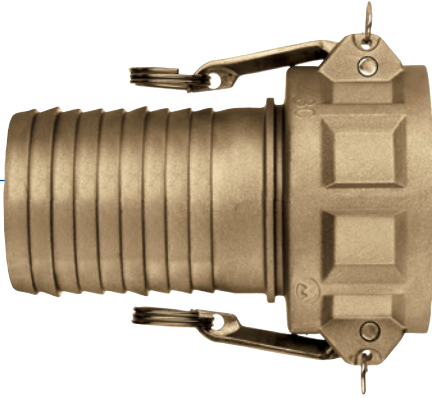
VIEW ONLINE



SCAN FOR INFO
or visit
[KOA.link/BR-B](https://koi.link/BR-B)

Part Number	Size (in)	PSI Rating at 70°F	ASTM Specification	Weight Each (lbs)	Standard Carton
BR-B050	1/2	250	B584 C85700	0.36	50
BR-B075	3/4	250	B584 C85700	0.44	25
BR-B100	1	250	B584 C85700	0.66	25
BR-B125	1 1/4	250	B584 C85700	1.19	20
BR-B150	1 1/2	250	B584 C85700	1.21	20
BR-B200	2	250	B584 C85700	1.39	20
BR-B250	2 1/2	150	B584 C85700	1.87	12
BR-B300	3	150	B584 C85700	3.36	8
BR-B400	4	150	B584 C85700	4.19	6
BR-B500	5	75	B584 C85700	5.18	4
BR-B600	6	75	B584 C85700	8.25	2

Because we continually examine ways to improve our products, we reserve the right to alter specifications or discontinue products without prior notice.



BR-C Series (Brass Part C)

Female Coupler X Hose Shank

GENERAL APPLICATIONS

Kuriyama Camlock Couplings are intended for use in many industrial applications. To learn more, please refer to pages 296-297 in this catalog.

FEATURES AND ADVANTAGES

- High quality design made to withstand rigorous applications found in industrial markets.
- Tri-Couple™ design available in 1 1/2", 2", 3", 4" sizes.
- Brass alloy is specially designed for high tensile strength, impact resistance, and rigidity.
- Supplied with forged brass handles which results in less wear on connecting parts.

MATERIAL SPECIFICATIONS

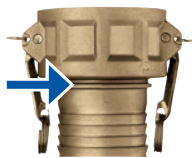
- ASTM brass alloy.
- Complies with Mil-Spec A-A-59326 for interchangeability in relevant sizes.
- Forged brass handles.
- 304 stainless steel handle pins and pull rings.
- Zinc-plated carbon steel safety clips.
- Buna-N gasket included.





VIEW ONLINE



SCAN FOR INFO
or visit
KOA.link/BR-C

TRI-COUPLE
FITTING DESIGN



Part Number	Size (in)	PSI Rating at 70°F	ASTM Specification	Weight Each (lbs)	Standard Carton
BR-C050	1/2	250	B584 C85700	0.35	50
BR-C075	3/4	250	B584 C85700	0.53	25
BR-C100	1	250	B584 C85700	0.81	25
BR-C125	1 1/4	250	B584 C85700	1.23	20
 BR-C150	1 1/2	250	B584 C85700	1.32	20
 BR-C200	2	250	B584 C85700	1.72	20
BR-C250	2 1/2	150	B584 C85700	2.42	12
 BR-C300	3	150	B584 C85700	3.74	8
 BR-C400	4	150	B584 C85700	5.51	6
BR-C500	5	75	B584 C85700	7.27	4
BR-C600	6	75	B584 C85700	13.77	2

 Designates Tri-Couple fitting

Because we continually examine ways to improve our products, we reserve the right to alter specifications or discontinue products without prior notice.



BR-D Series (*Brass Part D*)

Female Coupler X Female NPT

GENERAL APPLICATIONS

Kuriyama Camlock Couplings are intended for use in many industrial applications. To learn more, please refer to pages 296-297 in this catalog.

FEATURES AND ADVANTAGES

- High quality design made to withstand rigorous applications found in industrial markets.
- Brass alloy is specially designed for high tensile strength, impact resistance, and rigidity.
- Supplied with forged brass handles which results in less wear on connecting parts.

MATERIAL SPECIFICATIONS

- ASTM brass alloy.
- Complies with Mil-Spec A-A-59326 for interchangeability in relevant sizes.
- Forged brass handles.
- 304 stainless steel handle pins and pull rings.
- Zinc-plated carbon steel safety clips.
- Buna-N gasket included.

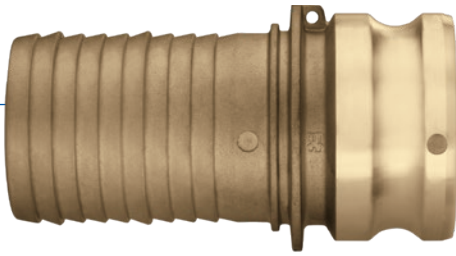
VIEW ONLINE



SCAN FOR INFO
or visit
[KOA.link/BR-D](https://koi.link/BR-D)

Part Number	Size (in)	PSI Rating at 70°F	ASTM Specification	Weight Each (lbs)	Standard Carton
BR-D050	1/2	250	B584 C85700	0.35	50
BR-D075	3/4	250	B584 C85700	0.51	25
BR-D100	1	250	B584 C85700	0.75	25
BR-D125	1 1/4	250	B584 C85700	1.12	20
BR-D150	1 1/2	250	B584 C85700	1.21	25
BR-D200	2	250	B584 C85700	1.43	25
BR-D250	2 1/2	150	B584 C85700	1.87	12
BR-D300	3	150	B584 C85700	3.13	8
BR-D400	4	150	B584 C85700	5.29	6
BR-D500	5	75	B584 C85700	5.62	4
BR-D600	6	75	B584 C85700	10.95	2

Because we continually examine ways to improve our products, we reserve the right to alter specifications or discontinue products without prior notice.



BR-E Series (Brass Part E)

Male Coupler X Hose Shank

GENERAL APPLICATIONS

Kuriyama Camlock Couplings are intended for use in many industrial applications. To learn more, please refer to pages 296-297 in this catalog.

FEATURES AND ADVANTAGES

- High quality design made to withstand rigorous applications found in industrial markets.
- Tri-Couple™ design available in 1 1/2", 2", 3", 4" sizes.
- Brass alloy specially designed for high tensile strength, impact resistance, and rigidity.

MATERIAL SPECIFICATIONS





- ASTM brass alloy.
- Complies with Mil-Spec A-A-59326 for interchangeability in relevant sizes.

VIEW ONLINE



SCAN FOR INFO
or visit
KOA.link/BR-E



Part Number	Size (in)	PSI Rating at 70°F	ASTM Specification	Weight Each (lbs)	Standard Carton
BR-E050	1/2	250	B584 C85700	0.24	50
BR-E075	3/4	250	B584 C85700	0.36	25
BR-E100	1	250	B584 C85700	0.59	25
BR-E125	1 1/4	250	B584 C85700	0.75	25
 BR-E150	1 1/2	250	B584 C85700	1.01	25
 BR-E200	2	250	B584 C85700	1.54	20
BR-E250	2 1/2	150	B584 C85700	2.11	12
 BR-E300	3	150	B584 C85700	3.08	8
 BR-E400	4	150	B584 C85700	4.30	6
BR-E500	5	75	B584 C85700	7.60	4
BR-E600	6	75	B584 C85700	12.33	2

 Designates Tri-Couple fitting

Because we continually examine ways to improve our products, we reserve the right to alter specifications or discontinue products without prior notice.



BR-F Series *(Brass Part F)*

Male Coupler X Male NPT

GENERAL APPLICATIONS

Kuriyama Camlock Couplings are intended for use in many industrial applications. To learn more, please refer to pages 296-297 in this catalog.

FEATURES AND ADVANTAGES

- High quality design made to withstand rigorous applications found in industrial markets.
- Brass alloy specially designed for high tensile strength, impact resistance, and rigidity.

MATERIAL SPECIFICATIONS

- ASTM brass alloy.
- Complies with Mil-Spec A-A-59326 for interchangeability in relevant sizes.

VIEW ONLINE



SCAN FOR INFO
or visit
KOA.link/BR-F

Part Number	Size (in)	PSI Rating at 70°F	ASTM Specification	Weight Each (lbs)	Standard Carton
BR-F050	1/2	250	B584 C85700	0.22	50
BR-F075	3/4	250	B584 C85700	0.33	25
BR-F100	1	250	B584 C85700	0.53	25
BR-F125	1 1/4	250	B584 C85700	0.66	25
BR-F150	1 1/2	250	B584 C85700	0.88	25
BR-F200	2	250	B584 C85700	1.08	20
BR-F250	2 1/2	150	B584 C85700	1.85	12
BR-F300	3	150	B584 C85700	2.42	8
BR-F400	4	150	B584 C85700	3.74	6
BR-F500	5	75	B584 C85700	4.63	4
BR-F600	6	75	B584 C85700	9.03	2

Because we continually examine ways to improve our products, we reserve the right to alter specifications or discontinue products without prior notice.



BR-DC Series (Brass Part DC)

Dust Cap

GENERAL APPLICATIONS

Kuriyama Camlock Couplings are intended for use in many industrial applications. To learn more, please refer to pages 296-297 in this catalog.

FEATURES AND ADVANTAGES

- High quality design made to withstand rigorous applications found in industrial markets.
- Brass alloy specially designed for high tensile strength, impact resistance, and rigidity.
- Supplied with forged brass handles which results in less wear on connecting parts.

MATERIAL SPECIFICATIONS

- ASTM brass alloy.
- Complies with Mil-Spec A-A-59326 for interchangeability in relevant sizes.
- Forged brass handles.
- 304 stainless steel handle pins and pull rings.
- Zinc-plated carbon steel safety clips.
- Buna-N gasket included.

VIEW ONLINE



SCAN FOR INFO
or visit

KOA.link/BR-DC

Part Number	Size (in)	PSI Rating at 70°F	ASTM Specification	Weight Each (lbs)	Standard Carton
BR-DC075	3/4	250	B584 C85700	0.66	50
BR-DC100	1	250	B584 C85700	0.95	25
BR-DC125	1 1/4	250	B584 C85700	1.04	20
BR-DC150	1 1/2	250	B584 C85700	1.32	25
BR-DC200	2	250	B584 C85700	2.05	20
BR-DC250	2 1/2	150	B584 C85700	2.20	12
BR-DC300	3	150	B584 C85700	3.96	8
BR-DC400	4	150	B584 C85700	4.74	6
BR-DC500	5	75	B584 C85700	5.59	4
BR-DC600	6	75	B584 C85700	10.66	2

Because we continually examine ways to improve our products, we reserve the right to alter specifications or discontinue products without prior notice.



BR-DP Series *(Brass Part DP)*

Dust Plug

GENERAL APPLICATIONS

Kuriyama Camlock Couplings are intended for use in many industrial applications. To learn more, please refer to pages 296-297 in this catalog.

FEATURES AND ADVANTAGES

- High quality design made to withstand rigorous applications found in industrial markets.
- Brass alloy specially designed for high tensile strength, impact resistance, and rigidity.

MATERIAL SPECIFICATIONS

- ASTM brass alloy.
- Complies with Mil-Spec A-A-59326 for interchangeability in relevant sizes.

VIEW ONLINE



SCAN FOR INFO
or visit
[KOA.link/BR-DP](https://koa.link/BR-DP)

Part Number	Size (in)	PSI Rating at 70°F	ASTM Specification	Weight Each (lbs)	Standard Carton
BR-DP075	3/4	250	B584 C85700	0.22	50
BR-DP100	1	250	B584 C85700	0.33	25
BR-DP125	1 1/4	250	B584 C85700	0.46	25
BR-DP150	1 1/2	250	B584 C85700	0.53	25
BR-DP200	2	250	B584 C85700	0.99	20
BR-DP250	2 1/2	150	B584 C85700	1.20	12
BR-DP300	3	150	B584 C85700	1.65	8
BR-DP400	4	150	B584 C85700	2.42	6
BR-DP500	5	75	B584 C85700	3.74	4
BR-DP600	6	75	B584 C85700	4.74	2

Because we continually examine ways to improve our products, we reserve the right to alter specifications or discontinue products without prior notice.



SS-A Series (316 Stainless Part A)

Male Coupler X Female NPT

GENERAL APPLICATIONS

Kuriyama Camlock Couplings are intended for use in many industrial applications. To learn more, please refer to pages 296-297 in this catalog.

FEATURES AND ADVANTAGES

- High quality design made to withstand rigorous applications found in industrial markets.
- Stainless steel alloy is analyzed on every melt, and specially designed for high tensile strength, rigidity, and impact resistance.

MATERIAL SPECIFICATIONS

- ASTM stainless steel alloy.
- Complies with Mil-Spec A-A-59326 for material and interchangeability in relevant sizes.

VIEW ONLINE



SCAN FOR INFO
or visit
KOA.link/SS-A

Part Number	Size (in)	PSI Rating at 70°F	ASTM Specification	Weight Each (lbs)	Standard Carton
SS-A050	1/2	250	A666/316	0.20	50
SS-A075	3/4	250	A666/316	0.26	25
SS-A100	1	250	A666/316	0.34	25
SS-A125	1 1/4	250	A666/316	0.62	36
SS-A150	1 1/2	250	A666/316	0.80	25
SS-A200	2	250	A666/316	1.12	20
SS-A250	2 1/2	150	A666/316	1.76	12
SS-A300	3	150	A666/316	2.16	8
SS-A400	4	150	A666/316	2.88	6
SS-A500	5	75	A666/316	4.30	4
SS-A600	6	75	A666/316	6.00	2

Because we continually examine ways to improve our products, we reserve the right to alter specifications or discontinue products without prior notice.



SS-B Series (316 Stainless Part B)

Female Coupler X Male NPT

GENERAL APPLICATIONS

Kuriyama Camlock Couplings are intended for use in many industrial applications. To learn more, please refer to pages 296-297 in this catalog.

FEATURES AND ADVANTAGES

- High quality design to withstand rigorous applications found in industrial markets.
- Stainless steel alloy is analyzed on every melt, and specially designed for high tensile strength, rigidity, and impact resistance.

MATERIAL SPECIFICATIONS

- ASTM stainless steel alloy.
- Complies with Mil-Spec A-A-59326 for material and interchangeability in relevant sizes.
- 304 stainless steel handles, handle pins, pull rings, and safety clips.
- Buna-N gasket included.

VIEW ONLINE



SCAN FOR INFO
or visit
KOA.link/SS-B

Part Number	Size (in)	PSI Rating at 70°F	ASTM Specification	Weight Each (lbs)	Standard Carton
SS-B050	1/2	250	A666/316	0.30	50
SS-B075	3/4	250	A666/316	0.42	25
SS-B100	1	250	A666/316	0.64	25
SS-B125	1 1/4	250	A666/316	1.32	20
SS-B150	1 1/2	250	A666/316	1.50	20
SS-B200	2	250	A666/316	1.92	20
SS-B250	2 1/2	150	A666/316	2.68	12
SS-B300	3	150	A666/316	3.20	8
SS-B400	4	150	A666/316	6.58	6
SS-B500	5	75	A666/316	6.80	4
SS-B600	6	75	A666/316	10.98	2

Because we continually examine ways to improve our products, we reserve the right to alter specifications or discontinue products without prior notice.



SS-C Series (316 Stainless Part C)

Female Coupler X Hose Shank

GENERAL APPLICATIONS

Kuriyama Camlock Couplings are intended for use in many industrial applications. To learn more, please refer to pages 296-297 in this catalog.

FEATURES AND ADVANTAGES

- High quality design made to withstand rigorous applications found in industrial markets.
- Tri-Couple™ design available in 1 1/2", 2", 3", 4" sizes.
- Stainless steel alloy is analyzed on every melt, and specially designed for high tensile strength, rigidity, and impact resistance.

MATERIAL SPECIFICATIONS

- ASTM stainless steel alloy.
- Complies with Mil-Spec A-A-59326 for material and interchangeability in relevant sizes.
- 304 stainless steel handles, handle pins, pull rings, and safety clips.
- Buna-N gasket included.





VIEW ONLINE



SCAN FOR INFO
or visit
KOA.link/SS-C

TRI-COUPLE
FITTING DESIGN



Part Number	Coupler Size (in)	Shank Size (in)	PSI Rating at 70°F	ASTM Specification	Weight Each (lbs)	Standard Carton
SS-C050	1/2	1/2	250	A666/316	0.30	50
SS-C075	3/4	3/4	250	A666/316	0.46	25
SS-C100	1	1	250	A666/316	0.74	25
SS-C125	1 1/4	1 1/4	250	A666/316	1.41	20
 SS-C150	1 1/2	1 1/2	250	A666/316	1.68	20
 SS-C200	2	2	250	A666/316	2.30	20
SS-C250	2 1/2	2 1/2	150	A666/316	3.10	12
 SS-C300	3	3	150	A666/316	4.12	8
SS-C3020	3	2	150	A666/316	3.65	6
 SS-C400	4	4	150	A666/316	6.98	6
SS-C500	5	5	75	A666/316	10.32	4
SS-C600	6	6	75	A666/316	14.55	2

 Designates Tri-Couple fitting

Because we continually examine ways to improve our products, we reserve the right to alter specifications or discontinue products without prior notice.



SS-D Series (316 Stainless Part D)

Female Coupler X Female NPT

GENERAL APPLICATIONS

Kuriyama Camlock Couplings are intended for use in many industrial applications. To learn more, please refer to pages 296-297 in this catalog.

FEATURES AND ADVANTAGES

- High quality design to withstand rigorous applications found in industrial markets.
- Stainless steel alloy is analyzed on every melt, and specially designed for high tensile strength, rigidity, and impact resistance.

MATERIAL SPECIFICATIONS

- ASTM stainless steel alloy.
- Complies with Mil-Spec A-A-59326 for material and interchangeability in relevant sizes.
- 304 stainless steel handles, handle pins, pull rings, and safety clips.
- Buna-N gasket included.

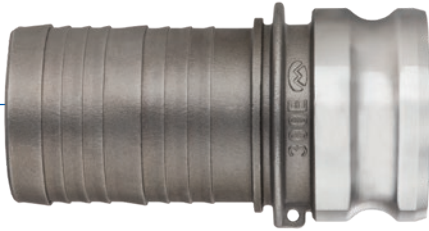
VIEW ONLINE



SCAN FOR INFO
or visit
KOA.link/SS-D

Part Number	Size (in)	PSI Rating at 70°F	ASTM Specification	Weight Each (lbs)	Standard Carton
SS-D050	1/2	250	A666/316	0.40	50
SS-D075	3/4	250	A666/316	0.52	25
SS-D100	1	250	A666/316	0.74	25
SS-D125	1 1/4	250	A666/316	1.47	20
SS-D150	1 1/2	250	A666/316	1.52	25
SS-D200	2	250	A666/316	2.16	25
SS-D250	2 1/2	150	A666/316	3.12	12
SS-D300	3	150	A666/316	3.82	8
SS-D400	4	150	A666/316	5.14	6
SS-D500	5	75	A666/316	8.00	4
SS-D600	6	75	A666/316	10.06	2

Because we continually examine ways to improve our products, we reserve the right to alter specifications or discontinue products without prior notice.



SS-E Series (316 Stainless Part E)

Male Coupler X Hose Shank

GENERAL APPLICATIONS

Kuriyama Camlock Couplings are intended for use in many industrial applications. To learn more, please refer to pages 296-297 in this catalog.

FEATURES AND ADVANTAGES

- High quality design made to withstand rigorous applications found in industrial markets.
- Tri-Couple™ design available in 1 1/2", 2", 3", 4" sizes.
- Stainless steel alloy is analyzed on every melt, and specially designed for high tensile strength, rigidity, and impact resistance.

MATERIAL SPECIFICATIONS





- ASTM stainless steel alloy.
- Complies with Mil-Spec A-A-59326 for material and interchangeability in relevant sizes.

VIEW ONLINE



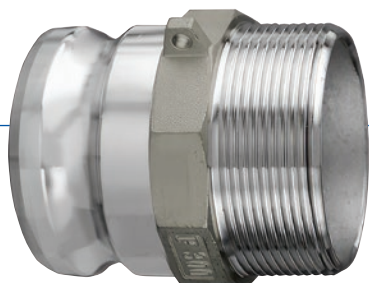
SCAN FOR INFO
or visit
KOA.link/SS-E



Part Number	Coupler Size (in)	Shank Size (in)	PSI Rating at 70°F	ASTM Specification	Weight Each (lbs)	Standard Carton
SS-E050	1/2	1/2	250	A666/316	0.25	50
SS-E075	3/4	3/4	250	A666/316	0.36	25
SS-E100	1	1	250	A666/316	0.60	25
SS-E125	1 1/4	1 1/4	250	A666/316	0.95	25
 SS-E150	1 1/2	1 1/2	250	A666/316	1.22	25
 SS-E200	2	2	250	A666/316	1.98	20
SS-E250	2 1/2	2 1/2	150	A666/316	2.64	12
 SS-E300	3	3	150	A666/316	3.90	8
SS-E3020	3	2	150	A666/316	3.15	6
 SS-E400	4	4	150	A666/316	6.38	6
SS-E500	5	5	75	A666/316	9.10	4
SS-E600	6	6	75	A666/316	13.49	2

 Designates Tri-Couple fitting

Because we continually examine ways to improve our products, we reserve the right to alter specifications or discontinue products without prior notice.



SS-F Series (316 Stainless Part F)

Male Coupler X Male NPT

GENERAL APPLICATIONS

Kuriyama Camlock Couplings are intended for use in many industrial applications. To learn more, please refer to pages 296-297 in this catalog.

FEATURES AND ADVANTAGES

- High quality design made to withstand rigorous applications found in industrial markets.
- Stainless steel alloy is analyzed on every melt, and specially designed for high tensile strength, rigidity, and impact resistance.

MATERIAL SPECIFICATIONS

- ASTM stainless steel alloy.
- Complies with Mil-Spec A-A-59326 for material and interchangeability in relevant sizes.

VIEW ONLINE



SCAN FOR INFO
or visit
KOA.link/SS-F

Part Number	Size (in)	PSI Rating at 70°F	ASTM Specification	Weight Each (lbs)	Standard Carton
SS-F050	1/2	250	A666/316	0.30	50
SS-F075	3/4	250	A666/316	0.40	25
SS-F100	1	250	A666/316	0.56	25
SS-F125	1 1/4	250	A666/316	1.06	25
SS-F150	1 1/2	250	A666/316	1.28	25
SS-F200	2	250	A666/316	1.82	20
SS-F250	2 1/2	150	A666/316	2.68	12
SS-F300	3	150	A666/316	3.92	8
SS-F400	4	150	A666/316	6.32	6
SS-F500	5	75	A666/316	8.26	4
SS-F600	6	75	A666/316	11.27	2

Because we continually examine ways to improve our products, we reserve the right to alter specifications or discontinue products without prior notice.



SS-DC Series (316 Stainless Part DC) Dust Cap

GENERAL APPLICATIONS

Kuriyama Camlock Couplings are intended for use in many industrial applications. To learn more, please refer to pages 296-297 in this catalog.

FEATURES AND ADVANTAGES

- High quality design made to withstand rigorous applications found in industrial markets.
- Stainless steel alloy is analyzed on every melt, and specially designed for high tensile strength, rigidity, and impact resistance.

MATERIAL SPECIFICATIONS

- ASTM stainless steel alloy.
- Complies with Mil-Spec A-A-59326 for material and interchangeability in relevant sizes.
- 304 stainless steel handles, handle pins, pull rings, and safety clips.
- Buna-N gasket included.

VIEW ONLINE



SCAN FOR INFO
or visit

KOA.link/SS-DC

Part Number	Size (in)	PSI Rating at 70°F	ASTM Specification	Weight Each (lbs)	Standard Carton
SS-DC050	1/2	250	A666/316	0.25	50
SS-DC075	3/4	250	A666/316	0.36	25
SS-DC100	1	250	A666/316	0.54	25
SS-DC125	1 1/4	250	A666/316	1.30	20
SS-DC150	1 1/2	250	A666/316	1.46	25
SS-DC200	2	250	A666/316	1.78	20
SS-DC250	2 1/2	150	A666/316	2.38	12
SS-DC300	3	150	A666/316	3.04	8
SS-DC400	4	150	A666/316	5.02	6
SS-DC500	5	75	A666/316	7.35	4
SS-DC600	6	75	A666/316	9.92	2

Because we continually examine ways to improve our products, we reserve the right to alter specifications or discontinue products without prior notice.



SS-DP Series (316 Stainless Part DP)

Dust Plug

GENERAL APPLICATIONS

Kuriyama Camlock Couplings are intended for use in many industrial applications. To learn more, please refer to pages 296-297 in this catalog.

FEATURES AND ADVANTAGES

- High quality design made to withstand rigorous applications found in industrial markets.
- Stainless steel alloy is analyzed on every melt, and specially designed for high tensile strength, rigidity, and impact resistance.

MATERIAL SPECIFICATIONS

- ASTM stainless steel alloy.
- Complies with Mil-Spec A-A-59326 for material and interchangeability in relevant sizes.

VIEW ONLINE



SCAN FOR INFO

or visit

[KOA.link/SS-DP](https://koi.link/SS-DP)

Part Number	Size (in)	PSI Rating at 70°F	ASTM Specification	Weight Each (lbs)	Standard Carton
SS-DP050	1/2	250	A666/316	0.15	50
SS-DP075	3/4	250	A666/316	0.20	25
SS-DP100	1	250	A666/316	0.28	25
SS-DP125	1 1/4	250	A666/316	0.60	25
SS-DP150	1 1/2	250	A666/316	0.72	25
SS-DP200	2	250	A666/316	0.96	20
SS-DP250	2 1/2	150	A666/316	1.47	12
SS-DP300	3	150	A666/316	1.94	8
SS-DP400	4	150	A666/316	3.36	6
SS-DP500	5	75	A666/316	6.24	4
SS-DP600	6	75	A666/316	9.08	2

Because we continually examine ways to improve our products, we reserve the right to alter specifications or discontinue products without prior notice.



SS304-A Series (304 Stainless Part A)

Male Coupler X Female NPT

GENERAL APPLICATIONS

Kuriyama Camlock Couplings are intended for use in many industrial applications. To learn more, please refer to pages 296-297 in this catalog.

FEATURES AND ADVANTAGES

- High quality design made to withstand rigorous applications found in industrial markets.
- Stainless steel alloy is analyzed on every melt, and specially designed for high tensile strength, rigidity, and impact resistance.

MATERIAL SPECIFICATIONS

- ASTM stainless steel alloy.
- Complies with Mil-Spec A-A-59326 for material and interchangeability in relevant sizes.

VIEW ONLINE



SCAN FOR INFO
or visit
KOALink.com/SS304-A

Part Number	Size (in)	PSI Rating at 70°F	ASTM Specification	Weight Each (lbs)	Standard Carton
SS304-A050	1/2	250	A666/304	0.20	50
SS304-A075	3/4	250	A666/304	0.26	25
SS304-A100	1	250	A666/304	0.34	25
SS304-A125	1 1/4	250	A666/304	0.62	36
SS304-A150	1 1/2	250	A666/304	0.80	25
SS304-A200	2	250	A666/304	1.12	20
SS304-A250	2 1/2	150	A666/304	1.76	12
SS304-A300	3	150	A666/304	2.16	8
SS304-A400	4	150	A666/304	2.88	6
SS304-A500	5	75	A666/304	4.30	4
SS304-A600	6	75	A666/304	6.00	2

Because we continually examine ways to improve our products, we reserve the right to alter specifications or discontinue products without prior notice.


VIEW ONLINE


 **SCAN FOR INFO**
 or visit
KOA.link/SS304-B

SS304-B Series (304 Stainless Part B)

Female Coupler X Male NPT

GENERAL APPLICATIONS

Kuriyama Camlock Couplings are intended for use in many industrial applications. To learn more, please refer to pages 296-297 in this catalog.

FEATURES AND ADVANTAGES

- High quality design to withstand rigorous applications found in industrial markets.
- Stainless steel alloy is analyzed on every melt, and specially designed for high tensile strength, rigidity, and impact resistance.

MATERIAL SPECIFICATIONS

- ASTM stainless steel alloy.
- Complies with Mil-Spec A-A-59326 for material and interchangeability in relevant sizes.
- 304 stainless steel handles, handle pins, pull rings, and safety clips.
- Buna-N gasket included.

Part Number	Size (in)	PSI Rating at 70°F	ASTM Specification	Weight Each (lbs)	Standard Carton
SS304-B050	1/2	250	A666/304	0.30	50
SS304-B075	3/4	250	A666/304	0.42	25
SS304-B100	1	250	A666/304	0.64	25
SS304-B125	1 1/4	250	A666/304	1.32	20
SS304-B150	1 1/2	250	A666/304	1.50	20
SS304-B200	2	250	A666/304	1.92	20
SS304-B250	2 1/2	150	A666/304	2.68	12
SS304-B300	3	150	A666/304	3.20	8
SS304-B400	4	150	A666/304	6.58	6
SS304-B500	5	75	A666/304	6.80	4
SS304-B600	6	75	A666/304	10.98	2

Because we continually examine ways to improve our products, we reserve the right to alter specifications or discontinue products without prior notice.



SS304-C Series (304 Stainless Part C)

Female Coupler X Hose Shank

GENERAL APPLICATIONS

Kuriyama Camlock Couplings are intended for use in many industrial applications. To learn more, please refer to pages 296-297 in this catalog.

FEATURES AND ADVANTAGES

- High quality design made to withstand rigorous applications found in industrial markets.
- Tri-Couple™ design available in 1 1/2", 2", 3", 4" sizes.
- Stainless steel alloy is analyzed on every melt, and specially designed for high tensile strength, rigidity, and impact resistance.

MATERIAL SPECIFICATIONS

- ASTM stainless steel alloy.
- Complies with Mil-Spec A-A-59326 for material and interchangeability in relevant sizes.
- 304 stainless steel handles, handle pins, pull rings, and safety clips.
- Buna-N gasket included.





VIEW ONLINE



SCAN FOR INFO
or visit
KOA.link/SS304-C

TRI-COUPLE
FITTING DESIGN



Part Number	Size (in)	PSI Rating at 70°F	ASTM Specification	Weight Each (lbs)	Standard Carton
SS304-C050	1/2	250	A666/304	0.30	50
SS304-C075	3/4	250	A666/304	0.46	25
SS304-C100	1	250	A666/304	0.74	25
SS304-C125	1 1/4	250	A666/304	1.41	20
 SS304-C150	1 1/2	250	A666/304	1.68	20
 SS304-C200	2	250	A666/304	2.30	20
SS304-C250	2 1/2	150	A666/304	3.10	12
 SS304-C300	3	150	A666/304	4.12	8
 SS304-C400	4	150	A666/304	6.98	6
SS304-C500	5	75	A666/304	10.32	4
SS304-C600	6	75	A666/304	14.55	2

 Designates Tri-Couple fitting

Because we continually examine ways to improve our products, we reserve the right to alter specifications or discontinue products without prior notice.



SS304-D Series (304 Stainless Part D)

Female Coupler X Female NPT

GENERAL APPLICATIONS

Kuriyama Camlock Couplings are intended for use in many industrial applications. To learn more, please refer to pages 296-297 in this catalog.

FEATURES AND ADVANTAGES

- High quality design to withstand rigorous applications found in industrial markets.
- Stainless steel alloy is analyzed on every melt, and specially designed for high tensile strength, rigidity, and impact resistance.

MATERIAL SPECIFICATIONS

- ASTM stainless steel alloy.
- Complies with Mil-Spec A-A-59326 for material and interchangeability in relevant sizes.
- 304 stainless steel handles, handle pins, pull rings, and safety clips.
- Buna-N gasket included.

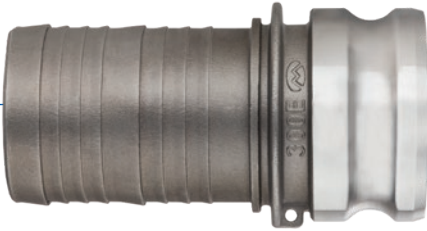
VIEW ONLINE



SCAN FOR INFO
or visit
KOA.link/SS304-D

Part Number	Size (in)	PSI Rating at 70°F	ASTM Specification	Weight Each (lbs)	Standard Carton
SS304-D050	1/2	250	A666/304	0.40	50
SS304-D075	3/4	250	A666/304	0.52	25
SS304-D100	1	250	A666/304	0.74	25
SS304-D125	1 1/4	250	A666/304	1.47	20
SS304-D150	1 1/2	250	A666/304	1.52	25
SS304-D200	2	250	A666/304	2.16	25
SS304-D250	2 1/2	150	A666/304	3.12	12
SS304-D300	3	150	A666/304	3.82	8
SS304-D400	4	150	A666/304	5.14	6
SS304-D500	5	75	A666/304	8.00	4
SS304-D600	6	75	A666/304	10.06	2

Because we continually examine ways to improve our products, we reserve the right to alter specifications or discontinue products without prior notice.



SS304-E Series (304 Stainless Part E)

Male Coupler X Hose Shank

GENERAL APPLICATIONS

Kuriyama Camlock Couplings are intended for use in many industrial applications. To learn more, please refer to pages 296-297 in this catalog.

FEATURES AND ADVANTAGES

- High quality design made to withstand rigorous applications found in industrial markets.
- Tri-Couple™ design available in 1 1/2", 2", 3", 4" sizes.
- Stainless steel alloy is analyzed on every melt, and specially designed for high tensile strength, rigidity, and impact resistance.

MATERIAL SPECIFICATIONS





- ASTM stainless steel alloy.
- Complies with Mil-Spec A-A-59326 for material and interchangeability in relevant sizes.

VIEW ONLINE



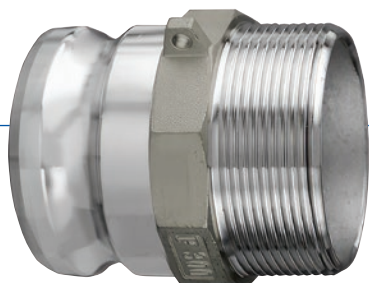
SCAN FOR INFO
or visit
KOA.link/SS304-E



Part Number	Size (in)	PSI Rating at 70°F	ASTM Specification	Weight Each (lbs)	Standard Carton
SS304-E050	1/2	250	A666/304	0.25	50
SS304-E075	3/4	250	A666/304	0.36	25
SS304-E100	1	250	A666/304	0.60	25
SS304-E125	1 1/4	250	A666/304	0.95	25
 SS304-E150	1 1/2	250	A666/304	1.22	25
 SS304-E200	2	250	A666/304	1.98	20
SS304-E250	2 1/2	150	A666/304	2.64	12
 SS304-E300	3	150	A666/304	3.90	8
 SS304-E400	4	150	A666/304	6.38	6
SS304-E500	5	75	A666/304	9.10	4
SS304-E600	6	75	A666/304	13.49	2

 Designates Tri-Couple fitting

Because we continually examine ways to improve our products, we reserve the right to alter specifications or discontinue products without prior notice.



SS304-F Series (304 Stainless Part F)

Male Coupler X Male NPT

GENERAL APPLICATIONS

Kuriyama Camlock Couplings are intended for use in many industrial applications. To learn more, please refer to pages 296-297 in this catalog.

FEATURES AND ADVANTAGES

- High quality design made to withstand rigorous applications found in industrial markets.
- Stainless steel alloy is analyzed on every melt, and specially designed for high tensile strength, rigidity, and impact resistance.

MATERIAL SPECIFICATIONS

- ASTM stainless steel alloy.
- Complies with Mil-Spec A-A-59326 for material and interchangeability in relevant sizes.

VIEW ONLINE



SCAN FOR INFO
or visit
KOA.link/SS304-F

Part Number	Size (in)	PSI Rating at 70°F	ASTM Specification	Weight Each (lbs)	Standard Carton
SS304-F050	1/2	250	A666/304	0.30	50
SS304-F075	3/4	250	A666/304	0.40	25
SS304-F100	1	250	A666/304	0.56	25
SS304-F125	1 1/4	250	A666/304	1.06	25
SS304-F150	1 1/2	250	A666/304	1.28	25
SS304-F200	2	250	A666/304	1.82	20
SS304-F250	2 1/2	150	A666/304	2.68	12
SS304-F300	3	150	A666/304	3.92	8
SS304-F400	4	150	A666/304	6.32	6
SS304-F500	5	75	A666/304	8.26	4
SS304-F600	6	75	A666/304	11.27	2

Because we continually examine ways to improve our products, we reserve the right to alter specifications or discontinue products without prior notice.



SS304-DC Series (304 Stainless Part DC) Dust Cap

GENERAL APPLICATIONS

Kuriyama Camlock Couplings are intended for use in many industrial applications. To learn more, please refer to pages 296-297 in this catalog.

FEATURES AND ADVANTAGES

- High quality design made to withstand rigorous applications found in industrial markets.
- Stainless steel alloy is analyzed on every melt, and specially designed for high tensile strength, rigidity, and impact resistance.

MATERIAL SPECIFICATIONS

- ASTM stainless steel alloy.
- Complies with Mil-Spec A-A-59326 for material and interchangeability in relevant sizes.
- 304 stainless steel handles, handle pins, pull rings, and safety clips.
- Buna-N gasket included.

VIEW ONLINE



SCAN FOR INFO
or visit

KOA.link/SS304-DC

Part Number	Size (in)	PSI Rating at 70°F	ASTM Specification	Weight Each (lbs)	Standard Carton
SS304-DC050	1/2	250	A666/304	0.25	50
SS304-DC075	3/4	250	A666/304	0.36	25
SS304-DC100	1	250	A666/304	0.54	25
SS304-DC125	1 1/4	250	A666/304	1.30	20
SS304-DC150	1 1/2	250	A666/304	1.46	25
SS304-DC200	2	250	A666/304	1.78	20
SS304-DC250	2 1/2	150	A666/304	2.38	12
SS304-DC300	3	150	A666/304	3.04	8
SS304-DC400	4	150	A666/304	5.02	6
SS304-DC500	5	75	A666/304	7.35	4
SS304-DC600	6	75	A666/304	9.92	2

Because we continually examine ways to improve our products, we reserve the right to alter specifications or discontinue products without prior notice.



SS304-DP Series (304 Stainless Part DP) Dust Plug

GENERAL APPLICATIONS

Kuriyama Camlock Couplings are intended for use in many industrial applications. To learn more, please refer to pages 296-297 in this catalog.

FEATURES AND ADVANTAGES

- High quality design made to withstand rigorous applications found in industrial markets.
- Stainless steel alloy is analyzed on every melt, and specially designed for high tensile strength, rigidity, and impact resistance.

MATERIAL SPECIFICATIONS

- ASTM stainless steel alloy.
- Complies with Mil-Spec A-A-59326 for material and interchangeability in relevant sizes.

VIEW ONLINE



SCAN FOR INFO

or visit

KOA.link/SS304-DP

Part Number	Size (in)	PSI Rating at 70°F	ASTM Specification	Weight Each (lbs)	Standard Carton
SS304-DP050	1/2	250	A666/304	0.15	50
SS304-DP075	3/4	250	A666/304	0.20	25
SS304-DP100	1	250	A666/304	0.28	25
SS304-DP125	1 1/4	250	A666/304	0.60	25
SS304-DP150	1 1/2	250	A666/304	0.72	25
SS304-DP200	2	250	A666/304	0.96	20
SS304-DP250	2 1/2	150	A666/304	1.47	12
SS304-DP300	3	150	A666/304	1.94	8
SS304-DP400	4	150	A666/304	3.36	6
SS304-DP600	6	75	A666/304	9.08	2

Because we continually examine ways to improve our products, we reserve the right to alter specifications or discontinue products without prior notice.



PPA Series (Polypropylene Part A)

Male Coupler X Female NPT

GENERAL APPLICATIONS

Kuriyama Camlock Couplings are intended for use in many industrial applications. To learn more, please refer to pages 296-297 in this catalog.

FEATURES AND ADVANTAGES

- Polypropylene material is glass filled for added strength and durability.
- Extremely lightweight yet strong.
- Precision molded to ensure consistency in form and function.
- Economical when compared with other materials.

MATERIAL SPECIFICATIONS

- Glass filled Polypropylene.
- Complies with Mil-Spec A-A-59326 for interchangeability in relevant sizes.

VIEW ONLINE



SCAN FOR INFO
or visit
[KOA.link/PPA](https://koa.link/PPA)

Part Number	Size (in)	PSI Rating at 70°F	Weight Each (lbs)	Standard Carton
PPA050	1/2	100	0.04	200
PPA075	3/4	100	0.05	50
PPA100	1	100	0.05	70
PPA125	1 1/4	100	0.10	40
PPA150	1 1/2	100	0.14	30
PPA200	2	100	0.19	40
PPA300	3	50	0.48	35
PPA400	4	50	1.02	20

Because we continually examine ways to improve our products, we reserve the right to alter specifications or discontinue products without prior notice.



PPB Series *(Polypropylene Part B)*

Female Coupler X Male NPT

GENERAL APPLICATIONS

Kuriyama Camlock Couplings are intended for use in many industrial applications. To learn more, please refer to pages 296-297 in this catalog.

FEATURES AND ADVANTAGES

- Polypropylene material is glass filled for added strength and durability.
- Extremely lightweight yet strong.
- Precision molded to ensure consistency in form and function.
- Economical when compared with other materials.

MATERIAL SPECIFICATIONS

- Glass filled Polypropylene.
- Complies with Mil-Spec A-A-59326 for interchangeability in relevant sizes.
- EPDM gasket included.

VIEW ONLINE



SCAN FOR INFO
or visit
KOA.link/PPB

Part Number	Size (in)	PSI Rating at 70°F	Weight Each (lbs)	Standard Carton
PPB050	1/2	100	0.17	50
PPB075	3/4	100	0.18	50
PPB100	1	100	0.26	30
PPB125	1 1/4	100	0.40	45
PPB150	1 1/2	100	0.47	30
PPB200	2	100	0.49	50
PPB300	3	50	1.17	25
PPB400	4	50	1.44	25

Because we continually examine ways to improve our products, we reserve the right to alter specifications or discontinue products without prior notice.



VIEW ONLINE



SCAN FOR INFO
or visit
KOA.link/PPC

PPC Series *(Polypropylene Part C)*

Female Coupler X Hose Shank

GENERAL APPLICATIONS

Kuriyama Camlock Couplings are intended for use in many industrial applications. To learn more, please refer to pages 296-297 in this catalog.

FEATURES AND ADVANTAGES

- Polypropylene material is glass filled for added strength and durability.
- Extremely lightweight yet strong.
- Precision molded to ensure consistency in form and function.
- Economical when compared with other materials.

MATERIAL SPECIFICATIONS

- Glass filled Polypropylene.
- Complies with Mil-Spec A-A-59326 for interchangeability in relevant sizes.
- Locking feature using safety clips to prevent disconnection during use.
- Supplied 304 stainless steel handles, handle pins, pull rings, and safety clips.
- All 4" size female couplers supplied with three handles to provide added stability.
- EPDM gasket included.

Part Number	Size (in)	PSI Rating at 70°F	Weight Each (lbs)	Standard Carton
PPC050	1/2	100	0.17	100
PPC075	3/4	100	0.19	50
PPC100	1	100	0.27	60
PPC125	1 1/4	100	0.40	35
PPC150	1 1/2	100	0.51	30
PPC200	2	100	0.61	40
PPC300	3	50	1.28	15
PPC400	4	50	1.70	15

Because we continually examine ways to improve our products, we reserve the right to alter specifications or discontinue products without prior notice.


VIEW ONLINE


 **SCAN FOR INFO**
 or visit
KOA.link/PPD

PPD Series (*Polypropylene Part D*)

Female Coupler X Female NPT

GENERAL APPLICATIONS

Kuriyama Camlock Couplings are intended for use in many industrial applications. To learn more, please refer to pages 296-297 in this catalog.

FEATURES AND ADVANTAGES

- Polypropylene material is glass filled for added strength and durability.
- Extremely lightweight yet strong.
- Precision molded to ensure consistency in form and function.
- Economical when compared with other materials.

MATERIAL SPECIFICATIONS

- Glass filled Polypropylene.
- Complies with Mil-Spec A-A-59326 for interchangeability in relevant sizes.
- Locking feature using safety clips to prevent disconnection during use.
- Supplied 304 stainless steel handles, handle pins, pull rings, and safety clips.
- All 4" size female couplers supplied with three handles to provide added stability.
- EPDM gasket included.

Part Number	Size (in)	PSI Rating at 70°F	Weight Each (lbs)	Standard Carton
PPD050	1/2	100	0.18	100
PPD075	3/4	100	0.19	50
PPD100	1	100	0.25	30
PPD125	1 1/4	100	0.41	40
PPD150	1 1/2	100	0.53	30
PPD200	2	100	0.55	40
PPD300	3	50	1.17	20
PPD400	4	50	1.58	10

Because we continually examine ways to improve our products, we reserve the right to alter specifications or discontinue products without prior notice.



PPE Series (*Polypropylene Part E*)

Male Coupler X Hose Shank

GENERAL APPLICATIONS

Kuriyama Camlock Couplings are intended for use in many industrial applications. To learn more, please refer to pages 296-297 in this catalog.

FEATURES AND ADVANTAGES

- Polypropylene material is glass filled for added strength and durability.
- Extremely lightweight yet strong.
- Precision molded to ensure consistency in form and function.
- Economical when compared with other materials.

MATERIAL SPECIFICATIONS

- Glass filled Polypropylene.
- Complies with Mil-Spec A-A-59326 for interchangeability in relevant sizes.

VIEW ONLINE



SCAN FOR INFO
or visit
[KOA.link/PPE](https://koi.link/PPE)

Part Number	Size (in)	PSI Rating at 70°F	Weight Each (lbs)	Standard Carton
PPE050	1/2	100	0.03	200
PPE075	3/4	100	0.06	50
PPE100	1	100	0.08	50
PPE125	1 1/4	100	0.15	30
PPE150	1 1/2	100	0.17	40
PPE200	2	100	0.30	50
PPE300	3	50	0.76	18
PPE400	4	50	1.00	20

Because we continually examine ways to improve our products, we reserve the right to alter specifications or discontinue products without prior notice.



PPF Series *(Polypropylene Part F)*

Male Coupler X Male NPT

GENERAL APPLICATIONS

Kuriyama Camlock Couplings are intended for use in many industrial applications. To learn more, please refer to pages 296-297 in this catalog.

FEATURES AND ADVANTAGES

- Polypropylene material is glass filled for added strength and durability.
- Extremely lightweight yet strong.
- Precision molded to ensure consistency in form and function.
- Economical when compared with other materials.

MATERIAL SPECIFICATIONS

- Glass filled Polypropylene.
- Complies with Mil-Spec A-A-59326 for interchangeability in relevant sizes.

VIEW ONLINE



SCAN FOR INFO
or visit
KOA.link/PPF

Part Number	Size (in)	PSI Rating at 70°F	Weight Each (lbs)	Standard Carton
PPF050	1/2	100	0.04	200
PPF075	3/4	100	0.06	50
PPF100	1	100	0.11	45
PPF125	1 1/4	100	0.15	30
PPF150	1 1/2	100	0.18	50
PPF200	2	100	0.29	60
PPF300	3	50	0.56	20
PPF400	4	50	0.81	25

Because we continually examine ways to improve our products, we reserve the right to alter specifications or discontinue products without prior notice.



PPDC Series *(Polypropylene Part DC)* Dust Cap

GENERAL APPLICATIONS

Kuriyama Camlock Couplings are intended for use in many industrial applications. To learn more, please refer to pages 296-297 in this catalog.

FEATURES AND ADVANTAGES

- Polypropylene material is glass filled for added strength and durability.
- Extremely lightweight yet strong.
- Precision molded to ensure consistency in form and function.
- Economical when compared with other materials.

MATERIAL SPECIFICATIONS

- Glass filled Polypropylene.
- Complies with Mil-Spec A-A-59326 for interchangeability in relevant sizes.
- Locking feature using safety clips to prevent disconnection during use.
- Supplied 304 stainless steel handles, handle pins, pull rings, and safety clips.
- All 4" size female couplers supplied with three handles to provide added stability.
- EPDM gasket included.

VIEW ONLINE



SCAN FOR INFO
or visit
KOA.link/PPDC

Part Number	Size (in)	PSI Rating at 70°F	Weight Each (lbs)	Standard Carton
PPDC050	1/2	100	0.16	100
PPDC075	3/4	100	0.17	50
PPDC100	1	100	0.24	40
PPDC125	1 1/4	100	0.42	25
PPDC150	1 1/2	100	0.47	40
PPDC200	2	100	0.50	60
PPDC300	3	50	1.06	30
PPDC400	4	50	1.11	15

Because we continually examine ways to improve our products, we reserve the right to alter specifications or discontinue products without prior notice.



PPDP Series *(Polypropylene Part DP)*

Dust Plug

GENERAL APPLICATIONS

Kuriyama Camlock Couplings are intended for use in many industrial applications. To learn more, please refer to pages 296-297 in this catalog.

FEATURES AND ADVANTAGES

- Polypropylene material is glass filled for added strength and durability.
- Extremely lightweight yet strong.
- Precision molded to ensure consistency in form and function.
- Economical when compared with other materials.

MATERIAL SPECIFICATIONS

- Glass filled Polypropylene.
- Complies with Mil-Spec A-A-59326 for interchangeability in relevant sizes.

VIEW ONLINE



SCAN FOR INFO
or visit
KOA.link/PPDP

Part Number	Size (in)	PSI Rating at 70°F	Weight Each (lbs)	Standard Carton
PPDP050	1/2	100	0.02	200
PPDP075	3/4	100	0.03	50
PPDP100	1	100	0.04	80
PPDP125	1 1/4	100	0.06	50
PPDP150	1 1/2	100	0.10	50
PPDP200	2	100	0.15	60
PPDP300	3	50	0.36	50
PPDP400	4	50	0.50	25

Because we continually examine ways to improve our products, we reserve the right to alter specifications or discontinue products without prior notice.



GRA Series (Nylon Part A)

Male Coupler X Female NPT

GENERAL APPLICATIONS

Kuriyama Camlock Couplings are intended for use in many industrial applications. To learn more, please refer to pages 296-297 in this catalog.

FEATURES AND ADVANTAGES

- Nylon material is fiberglass reinforced for added strength and durability.
- Good abrasion and chemical resistance.
- Lightweight yet strong.
- Precision molded to ensure consistency in form and function.

MATERIAL SPECIFICATIONS

- Fiberglass reinforced nylon.
- Complies with Mil-Spec A-A-59326 for interchangeability in relevant sizes.

VIEW ONLINE



SCAN FOR INFO
or visit
[KOA.link/GRA](https://koa.link/GRA)

Part Number	Size (in)	PSI Rating at 70°F	Weight Each (lbs)	Standard Carton
GRA100	1	100	0.16	70
GRA150	1 1/2	100	0.18	30
GRA200	2	100	0.26	40
GRA300	3	50	0.46	35
GRA400	4	50	0.92	20

Because we continually examine ways to improve our products, we reserve the right to alter specifications or discontinue products without prior notice.



VIEW ONLINE



SCAN FOR INFO
or visit
[KOA.link/GRB](https://koya.link/GRB)

GRB Series *(Nylon Part B)*

Female Coupler X Male NPT

GENERAL APPLICATIONS

Kuriyama Camlock Couplings are intended for use in many industrial applications. To learn more, please refer to pages 296-297 in this catalog.

FEATURES AND ADVANTAGES

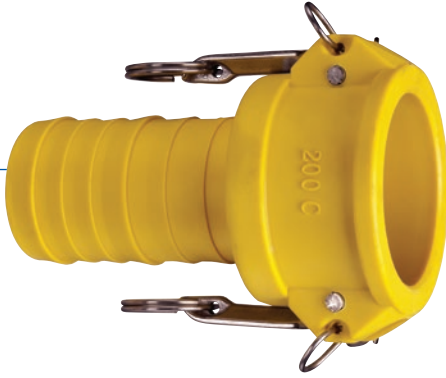
- Nylon material is fiberglass reinforced for added strength and durability.
- Good abrasion and chemical resistance.
- Lightweight yet strong.
- Precision molded to ensure consistency in form and function.

MATERIAL SPECIFICATIONS

- Fiberglass reinforced nylon.
- Complies with Mil-Spec A-A-59326 for interchangeability in relevant sizes.
- Locking feature using safety clips to prevent disconnection during use.
- Supplied 304 stainless steel handles, handle pins, pull rings, and safety clips.
- All 4" size female couplers supplied with three handles to provide added stability.
- EPDM gasket included.

Part Number	Size (in)	PSI Rating at 70°F	Weight Each (lbs)	Standard Carton
GRB100	1	100	0.16	30
GRB150	1 1/2	100	0.46	30
GRB200	2	100	0.52	50
GRB300	3	50	1.02	25
GRB400	4	50	1.34	25

Because we continually examine ways to improve our products, we reserve the right to alter specifications or discontinue products without prior notice.



GRC Series (Nylon Part C)

Female Coupler X Hose Shank

GENERAL APPLICATIONS

Kuriyama Camlock Couplings are intended for use in many industrial applications. To learn more, please refer to pages 296-297 in this catalog.

FEATURES AND ADVANTAGES

- Nylon material is fiberglass reinforced for added strength and durability.
- Good abrasion and chemical resistance.
- Lightweight yet strong.
- Precision molded to ensure consistency in form and function.

MATERIAL SPECIFICATIONS

- Fiberglass reinforced nylon.
- Complies with Mil-Spec A-A-59326 for interchangeability in relevant sizes.
- Locking feature using safety clips to prevent disconnection during use.
- Supplied 304 stainless steel handles, handle pins, pull rings, and safety clips.
- All 4" size female couplers supplied with three handles to provide added stability.
- EPDM gasket included.

VIEW ONLINE



SCAN FOR INFO
or visit
[KOA.link/GRC](https://koya.link/GRC)

Part Number	Size (in)	PSI Rating at 70°F	Weight Each (lbs)	Standard Carton
GRC100	1	100	0.18	60
GRC150	1 1/2	100	0.50	30
GRC200	2	100	0.58	40
GRC300	3	50	1.24	15
GRC400	4	50	1.60	15

Because we continually examine ways to improve our products, we reserve the right to alter specifications or discontinue products without prior notice.



GRD Series (Nylon Part D)

Female Coupler X Female NPT

VIEW ONLINE



SCAN FOR INFO
or visit
[KOA.link/GRD](https://koya.link/GRD)

GENERAL APPLICATIONS

Kuriyama Camlock Couplings are intended for use in many industrial applications. To learn more, please refer to pages 296-297 in this catalog.

FEATURES AND ADVANTAGES

- Nylon material is fiberglass reinforced for added strength and durability.
- Good abrasion and chemical resistance.
- Lightweight yet strong.
- Precision molded to ensure consistency in form and function.

MATERIAL SPECIFICATIONS

- Fiberglass reinforced nylon.
- Complies with Mil-Spec A-A-59326 for interchangeability in relevant sizes.
- Locking feature using safety clips to prevent disconnection during use.
- Supplied 304 stainless steel handles, handle pins, pull rings, and safety clips.
- All 4" size female couplers supplied with three handles to provide added stability.
- EPDM gasket included.

Part Number	Size (in)	PSI Rating at 70°F	Weight Each (lbs)	Standard Carton
GRD100	1	100	0.18	30
GRD150	1 1/2	100	0.50	30
GRD200	2	100	0.58	40
GRD300	3	50	1.04	20
GRD400	4	50	1.48	10

Because we continually examine ways to improve our products, we reserve the right to alter specifications or discontinue products without prior notice.

GRE Series (Nylon Part E) Male Coupler X Hose Shank



GENERAL APPLICATIONS

Kuriyama Camlock Couplings are intended for use in many industrial applications. To learn more, please refer to pages 296-297 in this catalog.

FEATURES AND ADVANTAGES

- Nylon material is fiberglass reinforced for added strength and durability.
- Good abrasion and chemical resistance.
- Lightweight yet strong.
- Precision molded to ensure consistency in form and function.

MATERIAL SPECIFICATIONS

- Fiberglass reinforced nylon.
- Complies with Mil-Spec A-A-59326 for interchangeability in relevant sizes.

VIEW ONLINE



SCAN FOR INFO
or visit
[KOA.link/GRE](https://koya.link/GRE)

Part Number	Size (in)	PSI Rating at 70°F	Weight Each (lbs)	Standard Carton
GRE100	1	100	0.16	50
GRE150	1 1/2	100	0.18	40
GRE200	2	100	0.28	50
GRE300	3	50	0.66	18
GRE400	4	50	0.04	20

Because we continually examine ways to improve our products, we reserve the right to alter specifications or discontinue products without prior notice.



GRF Series *(Nylon Part F)*

Male Coupler X Male NPT

GENERAL APPLICATIONS

Kuriyama Camlock Couplings are intended for use in many industrial applications. To learn more, please refer to pages 296-297 in this catalog.

FEATURES AND ADVANTAGES

- Nylon material is fiberglass reinforced for added strength and durability.
- Good abrasion and chemical resistance.
- Lightweight yet strong.
- Precision molded to ensure consistency in form and function.

MATERIAL SPECIFICATIONS

- Fiberglass reinforced nylon.
- Complies with Mil-Spec A-A-59326 for interchangeability in relevant sizes.

VIEW ONLINE



SCAN FOR INFO
or visit
KOA.link/GRF

Part Number	Size (in)	PSI Rating at 70°F	Weight Each (lbs)	Standard Carton
GRF100	1	100	0.10	45
GRF150	1 1/2	100	0.18	50
GRF200	2	100	0.28	60
GRF300	3	50	0.66	20
GRF400	4	50	0.90	25

Because we continually examine ways to improve our products, we reserve the right to alter specifications or discontinue products without prior notice.



GRDC Series *(Nylon Part DC)*

Dust Cap

GENERAL APPLICATIONS

Kuriyama Camlock Couplings are intended for use in many industrial applications. To learn more, please refer to pages 296-297 in this catalog.

FEATURES AND ADVANTAGES

- Nylon material is fiberglass reinforced for added strength and durability.
- Good abrasion and chemical resistance.
- Lightweight yet strong.
- Precision molded to ensure consistency in form and function.

MATERIAL SPECIFICATIONS

- Fiberglass reinforced nylon.
- Complies with Mil-Spec A-A-59326 for interchangeability in relevant sizes.
- Locking feature using safety clips to prevent disconnection during use.
- Supplied 304 stainless steel handles, handle pins, pull rings, and safety clips.
- All 4" size female couplers supplied with three handles to provide added stability.
- EPDM gasket included.

VIEW ONLINE



SCAN FOR INFO
or visit

[KOA.link/GRDC](https://koya.link/GRDC)

Part Number	Size (in)	PSI Rating at 70°F	Weight Each (lbs)	Standard Carton
GRDC100	1	100	0.16	40
GRDC150	1 1/2	100	0.46	40
GRDC200	2	100	0.50	60
GRDC300	3	50	0.96	30
GRDC400	4	50	1.16	15

Because we continually examine ways to improve our products, we reserve the right to alter specifications or discontinue products without prior notice.



GRDP Series *(Nylon Part DP)*

Dust Plug

GENERAL APPLICATIONS

Kuriyama Camlock Couplings are intended for use in many industrial applications. To learn more, please refer to pages 296-297 in this catalog.

FEATURES AND ADVANTAGES

- Nylon material is fiberglass reinforced for added strength and durability.
- Good abrasion and chemical resistance.
- Lightweight yet strong.
- Precision molded to ensure consistency in form and function.

MATERIAL SPECIFICATIONS

- Fiberglass reinforced nylon.
- Complies with Mil-Spec A-A-59326 for interchangeability in relevant sizes.

VIEW ONLINE



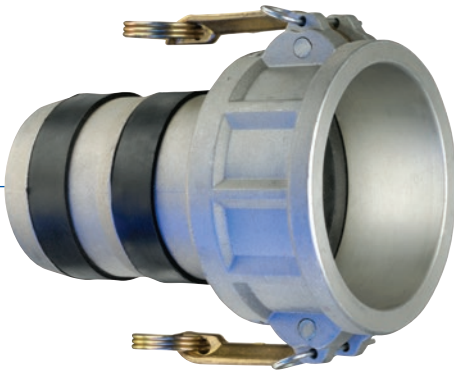
SCAN FOR INFO

or visit

[KOA.link/GRDP](https://koi.link/GRDP)

Part Number	Size (in)	PSI Rating at 70°F	Weight Each (lbs)	Standard Carton
GRDP100	1	100	0.06	50
GRDP150	1 1/2	100	0.12	50
GRDP200	2	100	0.20	60
GRDP300	3	50	0.36	50
GRDP400	4	50	0.60	25

Because we continually examine ways to improve our products, we reserve the right to alter specifications or discontinue products without prior notice.



AL-CLF Series (Aluminum Part C)

Female Coupler X Hose Shank

EZ-Seal™ Design

GENERAL APPLICATIONS

Kuriyama Camlock Couplings are intended for use in many industrial applications. To learn more, please refer to pages 296-297 in this catalog.

FEATURES AND ADVANTAGES

- High quality design made to withstand rigorous applications found in industrial markets.
- EZ-Seal™ couplings are designed with rubber seals to help prevent leakage.
- Aluminum alloy is specially designed for high tensile strength and impact resistance.
- EZ-Seal™ design is versatile and can be used with many different hose materials.
- Forged brass handles result in less wear on connecting parts.

MATERIAL SPECIFICATIONS

- ASTM aluminum alloy, specially designed for high tensile strength and impact resistance.
- BUNA-N gasket and rubber seals included.
- Complies with Mil-Spec A-A-59326 for interchangeability in relevant sizes.
- Forged brass handles.
- 304 stainless steel handle pins and pull rings.
- Zinc-plated carbon steel safety clips.

Note: To insure proper sealing attach band clamps directly over rubber seals during assembly procedure



Part Number	Size (in)	PSI Rating at 70°F	ASTM Specification	Weight Each (lbs)	Standard Carton
AL-CLF150	1 1/2	250	B85 Grade 383	0.77	30
AL-CLF200	2	250	B85 Grade 383	0.98	40
AL-CLF300	3	150	B85 Grade 383	1.98	15
AL-CLF400	4	150	B85 Grade 383	2.87	15
AL-CLF600	6	75	B85 Grade 383	5.65	6

Because we continually examine ways to improve our products, we reserve the right to alter specifications or discontinue products without prior notice.



AL-ELF Series (Aluminum Part E)

Male Coupler X Hose Shank

EZ-Seal™ Design

GENERAL APPLICATIONS

Kuriyama Camlock Couplings are intended for use in many industrial applications. To learn more, please refer to pages 296-297 in this catalog.

FEATURES AND ADVANTAGES

- High quality design made to withstand rigorous applications found in industrial markets.
- EZ-Seal™ couplings are designed with rubber seals to help prevent leakage.
- Aluminum alloy is specially designed for high tensile strength and impact resistance.
- EZ-Seal™ design is versatile and can be used with many different hose materials.

MATERIAL SPECIFICATIONS

- ASTM aluminum alloy, specially designed for high tensile strength and impact resistance.
- BUNA-N rubber seals.
- Complies with Mil-Spec A-A-59326 for interchangeability in relevant sizes.

Note: To insure proper sealing attach band clamps directly over rubber seals during assembly procedure

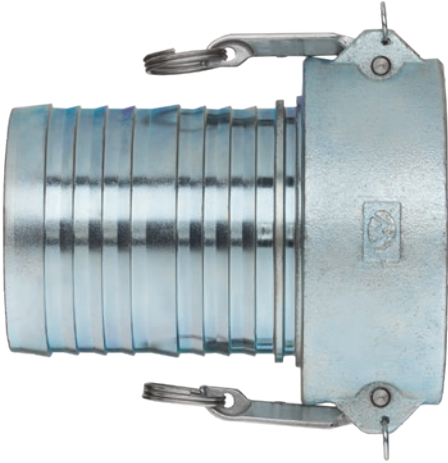
VIEW ONLINE



SCAN FOR INFO
or visit
KOA.link/AL-ELF

Part Number	Size (in)	PSI Rating at 70°F	ASTM Specification	Weight Each (lbs)	Standard Carton
AL-ELF150	1 1/2	250	B85 Grade 383	0.44	40
AL-ELF200	2	250	B85 Grade 383	0.64	50
AL-ELF300	3	150	B85 Grade 383	1.38	18
AL-ELF400	4	150	B85 Grade 383	2.51	20
AL-ELF600	6	75	B85 Grade 383	4.83	6

Because we continually examine ways to improve our products, we reserve the right to alter specifications or discontinue products without prior notice.



DI-C Series *(Ductile Iron Part C)*

Female Coupler X Hose Shank

GENERAL APPLICATIONS

Kuriyama Camlock Couplings are intended for use in many industrial applications. To learn more, please refer to pages 296-297 in this catalog.

FEATURES AND ADVANTAGES

- High quality design made to withstand rigorous applications found in industrial markets.
- Coupling ID specially designed for maximum flow of product.
- Locking feature using safety clips to prevent disconnection during use.

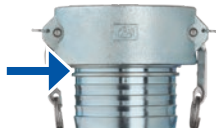
MATERIAL SPECIFICATIONS

- Zinc plated ductile iron material.
- Complies with Mil-Spec A-A-59326 for interchangeability in relevant sizes.
- 304 stainless steel handle pins and pull rings.
- Zinc-plated carbon steel safety clips.
- Buna-N gasket included.

VIEW ONLINE

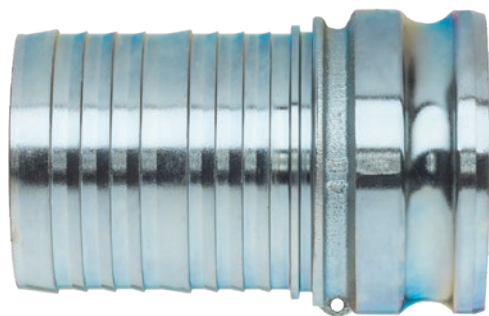


SCAN FOR INFO
or visit
[KOA.link/DI-C](https://koa.link/DI-C)



Part Number	Size (in)	PSI Rating at 70°F	Weight Each (lbs)	Standard Carton
DI-C400	4	150	7.29	15

Because we continually examine ways to improve our products, we reserve the right to alter specifications or discontinue products without prior notice.



DI-E Series *(Ductile Iron Part E)*

Male Coupler X Hose Shank

GENERAL APPLICATIONS

Kuriyama Camlock Couplings are intended for use in many industrial applications. To learn more, please refer to pages 296-297 in this catalog.

FEATURES AND ADVANTAGES

- High quality design made to withstand rigorous applications found in industrial markets.
- Coupling ID specially designed for maximum flow of product.

MATERIAL SPECIFICATIONS

- Zinc plated ductile iron material.
- Complies with Mil-Spec A-A-59326 for interchangeability in relevant sizes.

VIEW ONLINE



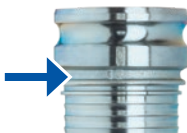
SCAN FOR INFO

or visit

[KOA.link/DI-E](https://koi.link/DI-E)



TRI-COUPLE
FITTING DESIGN



Part Number	Size (in)	PSI Rating at 70°F	Weight Each (lbs)	Standard Carton
DI-E400	4	150	5.84	20

Because we continually examine ways to improve our products, we reserve the right to alter specifications or discontinue products without prior notice.



VIEW ONLINE



SCAN FOR INFO
or visit
KOA.link/ALSH-B

ALSH-B Series (Aluminum Part B)

Female Coupler X Male NPT

GENERAL APPLICATIONS

Kuriyama Camlock Couplings are intended for use in many industrial applications. To learn more, please refer to pages 296-297 in this catalog.

FEATURES AND ADVANTAGES

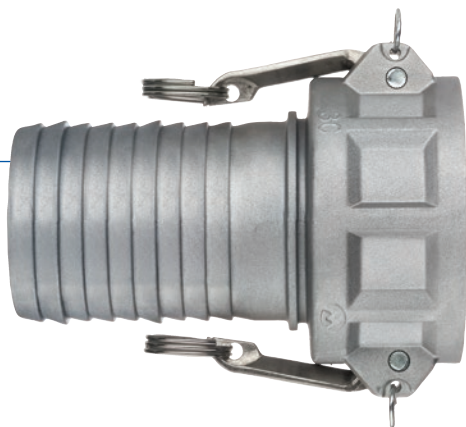
- High quality design made to withstand rigorous applications found in industrial markets.
- Aluminum alloy specially designed for high tensile strength and impact resistance.
- Supplied with stainless steel handles which are preferred in agriculture markets.

MATERIAL SPECIFICATIONS

- ASTM aluminum alloy.
- Complies with Mil-Spec A-A-59326 for interchangeability in relevant sizes.
- 304 stainless steel handles, handle pins, pull rings and safety clips.
- Buna-N gasket included.

Part Number	Size (in)	PSI Rating at 70°F	ASTM Specification	Weight Each (lbs)	Standard Carton
ALSH-B100	1	250	B85 Grade 383	0.36	25
ALSH-B125	1 1/4	250	B108-92 356	0.62	20
ALSH-B150	1 1/2	250	B85 Grade 383	0.70	12
ALSH-B200	2	250	B85 Grade 383	0.86	10
ALSH-B250	2 1/2	150	B85 Grade 383	1.02	12
ALSH-B300	3	150	B85 Grade 383	1.56	8
ALSH-B400	4	150	B85 Grade 383	2.42	12

Because we continually examine ways to improve our products, we reserve the right to alter specifications or discontinue products without prior notice.



ALSH-C Series (Aluminum Part C)

Female Coupler X Hose Shank

GENERAL APPLICATIONS

Kuriyama Camlock Couplings are intended for use in many industrial applications. To learn more, please refer to pages 296-297 in this catalog.

FEATURES AND ADVANTAGES

- High quality design made to withstand rigorous applications found in industrial markets.
- Tri-Couple design available in 1 1/2", 2", 2 1/2", 3", 4" sizes.
- Hose shanks specially designed for easy assembly with Tigerflex™ hoses.
- Aluminum alloy specially designed for high tensile strength and impact resistance.
- Supplied with stainless steel handles which are preferred in agriculture markets.

MATERIAL SPECIFICATIONS

- ASTM aluminum alloy.
- Complies with Mil-Spec A-A-59326 for interchangeability in relevant sizes.
- 304 stainless steel handles, handle pins, pull rings, and safety clips.
- Buna-N gasket included.

VIEW ONLINE

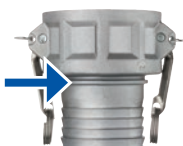







SCAN FOR INFO
or visit

KOA.link/ALSH-C



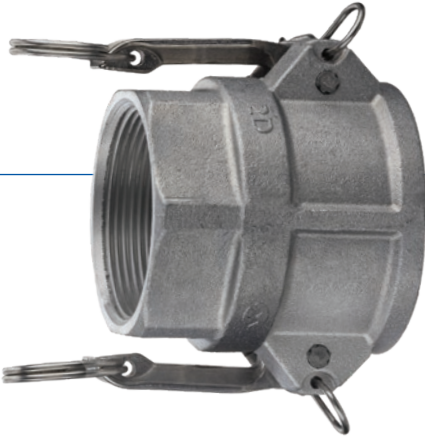
TRI-COUPLE
FITTING DESIGN



Part Number	Size (in)	PSI Rating at 70°F	ASTM Specification	Weight Each (lbs)	Standard Carton
ALSH-C100	1	250	B85 Grade 383	0.42	25
ALSH-C125	1 1/4	250	B108-92 356	0.68	20
 ALSH-C150	1 1/2	250	B85 Grade 383	0.74	10
 ALSH-C200	2	250	B85 Grade 383	0.98	12
 ALSH-C250	2 1/2	150	B85 Grade 383	1.28	12
 ALSH-C300	3	150	B85 Grade 383	2.20	6
 ALSH-C400	4	150	B85 Grade 383	3.16	6

 Designates Tri-Couple fitting

Because we continually examine ways to improve our products, we reserve the right to alter specifications or discontinue products without prior notice.



ALSH-D Series (Aluminum Part D)

Female Coupler X Female NPT

GENERAL APPLICATIONS

Kuriyama Camlock Couplings are intended for use in many industrial applications. To learn more, please refer to pages 296-297 in this catalog.

FEATURES AND ADVANTAGES

- High quality design to withstand rigorous applications found in industrial markets.
- Aluminum alloy specially designed for high tensile strength and impact resistance.
- Supplied with stainless steel handles which are preferred in agriculture markets.

MATERIAL SPECIFICATIONS

- ASTM aluminum alloy.
- Complies with Mil-Spec A-A-59326 for interchangeability in relevant sizes.
- 304 stainless steel handles, handle pins, pull rings, and safety clips.
- Buna-N gasket included.

VIEW ONLINE



SCAN FOR INFO
or visit

KOA.link/ALSH-D

Part Number	Size (in)	PSI Rating at 70°F	ASTM Specification	Weight Each (lbs)	Standard Carton
ALSH-D100	1	250	B85 Grade 383	0.42	25
ALSH-D125	1 1/4	250	B108-92 356	0.68	20
ALSH-D150	1 1/2	250	B85 Grade 383	0.80	12
ALSH-D200	2	250	B85 Grade 383	0.92	10
ALSH-D250	2 1/2	150	B85 Grade 383	1.18	12
ALSH-D300	3	150	B85 Grade 383	1.80	10
ALSH-D400	4	150	B85 Grade 383	2.16	10

Because we continually examine ways to improve our products, we reserve the right to alter specifications or discontinue products without prior notice.



ALSH-DC Series (Aluminum Part DC) Dust Cap

GENERAL APPLICATIONS

Kuriyama Camlock Couplings are intended for use in many industrial applications. To learn more, please refer to pages 296-297 in this catalog.

FEATURES AND ADVANTAGES

- High quality design made to withstand rigorous applications found in industrial markets.
- Aluminum alloy specially designed for high tensile strength and impact resistance.
- Supplied with stainless steel handles which are preferred in agriculture markets.

MATERIAL SPECIFICATIONS

- ASTM aluminum alloy.
- Complies with Mil-Spec A-A-59326 for interchangeability in relevant sizes.
- 304 stainless steel handles, handle pins, pull rings, and safety clips.
- Buna-N gasket included.

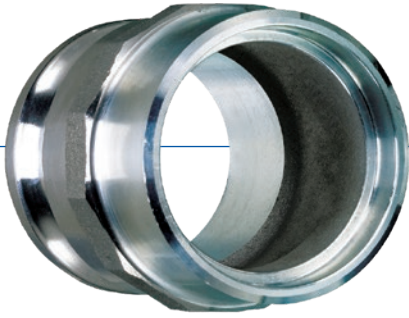
VIEW ONLINE



SCAN FOR INFO
or visit
KOA.link/ALSH-DC

Part Number	Size (in)	PSI Rating at 70°F	ASTM Specification	Weight Each (lbs)	Standard Carton
ALSH-DC100	1	250	B85 Grade 383	0.34	25
ALSH-DC125	1 1/4	250	B108-92 356	0.58	20
ALSH-DC150	1 1/2	250	B85 Grade 383	0.64	25
ALSH-DC200	2	250	B85 Grade 383	0.80	20
ALSH-DC250	2 1/2	150	B85 Grade 383	0.94	12
ALSH-DC300	3	150	B85 Grade 383	1.44	8
ALSH-DC400	4	150	B85 Grade 383	2.34	6

Because we continually examine ways to improve our products, we reserve the right to alter specifications or discontinue products without prior notice.



BW-ALF Series *(Aluminum Part F)*

Male Coupler X Butt Weld

GENERAL APPLICATIONS

Kuriyama Camlock Couplings are intended for use in many industrial applications. To learn more, please refer to pages 296-297 in this catalog.

FEATURES AND ADVANTAGES

- High quality design made to withstand rigorous applications found in industrial markets.
- Aluminum alloy specially designed for high tensile strength and impact resistance.
- BW items are dual purpose which allows them be used as butt weld fittings to schedule 40 pipe and socket weld fittings for nominal OD tubing.

MATERIAL SPECIFICATIONS

- ASTM aluminum alloy.
- Complies with Mil-Spec A-A-59326 for interchangeability in relevant sizes.

VIEW ONLINE



◀ **SCAN FOR INFO**
or visit

KOA.link/BW-ALF

Part Number	Size (in)	PSI Rating at 70°F	ASTM Specification	Weight Each (lbs)	Standard Carton
BW-ALF150	1 1/2	250	B26 Grade 713	0.52	50
BW-ALF200	2	250	B26 Grade 713	0.74	60
BW-ALF250	2 1/2	150	B26 Grade 713	1.02	30
BW-ALF300	3	150	B26 Grade 713	1.36	20
BW-ALF400	4	150	B26 Grade 713	2.40	25
BW-ALF500	5	75	B26 Grade 713	3.03	4
BW-ALF600	6	75	B26 Grade 713	4.01	10
BW-ALF800	8	50	B26 Grade 713	8.05	2

Because we continually examine ways to improve our products, we reserve the right to alter specifications or discontinue products without prior notice.



BW-ALB Series (Aluminum Part B)

Female Coupler X Butt Weld

GENERAL APPLICATIONS

Kuriyama Camlock Couplings are intended for use in many industrial applications. To learn more, please refer to pages 296-297 in this catalog.

FEATURES AND ADVANTAGES

- High quality design made to withstand rigorous applications found in industrial markets.
- Aluminum alloy specially designed for high tensile strength and impact resistance.
- Supplied with forged brass handles which results in less wear on connecting parts.
- BW items are dual purpose which allows them be used as butt weld fittings to schedule 40 pipe and socket weld fittings for nominal OD tubing.

MATERIAL SPECIFICATIONS

- ASTM aluminum alloy.
- Complies with Mil-Spec A-A-59326 for interchangeability in relevant sizes.
- Forged brass handles.
- Zinc plated carbon steel handle pins, pull rings and safety clips.
- Buna-N gasket included.

VIEW ONLINE



SCAN FOR INFO
or visit

KOA.link/BW-ALB

Part Number	Size (in)	PSI Rating at 70°F	ASTM Specification	Weight Each (lbs)	Standard Carton
BW-ALB150	1 1/2	250	B26 Grade 713	0.76	30
BW-ALB200	2	250	B26 Grade 713	0.92	50
BW-ALB250	2 1/2	150	B26 Grade 713	1.09	40
BW-ALB300	3	150	B26 Grade 713	1.64	25
BW-ALB400	4	150	B26 Grade 713	2.51	25
BW-ALB500	5	75	B26 Grade 713	3.43	4
BW-ALB600	6	75	B26 Grade 713	5.08	10
BW-ALB800	8	50	B26 Grade 713	8.15	2

Because we continually examine ways to improve our products, we reserve the right to alter specifications or discontinue products without prior notice.



SW-ALA Series (Aluminum Part A)

Male Coupler X Socket Weld

GENERAL APPLICATIONS

Kuriyama Camlock Couplings are intended for use in many industrial applications. To learn more, please refer to pages 296-297 in this catalog.

FEATURES AND ADVANTAGES

- High quality design made to withstand rigorous applications found in industrial markets.
- Aluminum alloy specially designed for high tensile strength and impact resistance.
- Socket weld items are designed for use with schedule 40 pipe.

MATERIAL SPECIFICATIONS

- ASTM aluminum alloy.
- Complies with Mil-Spec A-A-59326 for interchangeability in relevant sizes.

VIEW ONLINE

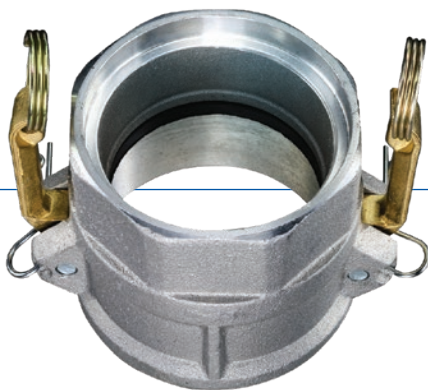


SCAN FOR INFO
or visit

KOA.link/SW-ALA

Part Number	Size (in)	PSI Rating at 70°F	ASTM Specification	Weight Each (lbs)	Standard Carton
SW-ALA150	1 1/2	250	B26 Grade 713	0.37	30
SW-ALA200	2	250	B26 Grade 713	0.45	40
SW-ALA250	2 1/2	150	B26 Grade 713	0.65	50
SW-ALA300	3	150	B26 Grade 713	0.77	35
SW-ALA400	4	150	B26 Grade 713	1.41	20
SW-ALA500	5	75	B26 Grade 713	1.70	4
SW-ALA600	6	75	B26 Grade 713	2.08	15

Because we continually examine ways to improve our products, we reserve the right to alter specifications or discontinue products without prior notice.



SW-ALD Series (Aluminum Part D)

Female Coupler X Socket Weld

GENERAL APPLICATIONS

Kuriyama Camlock Couplings are intended for use in many industrial applications. To learn more, please refer to pages 296-297 in this catalog.

FEATURES AND ADVANTAGES

- High quality design made to withstand rigorous applications found in industrial markets.
- Aluminum alloy specially designed for high tensile strength and impact resistance.
- Supplied with forged brass handles which results in less wear on connecting parts.
- Socket weld items are designed for use with schedule 40 pipe.

MATERIAL SPECIFICATIONS

- ASTM aluminum alloy.
- Complies with Mil-Spec A-A-59326 for interchangeability in relevant sizes.
- Zinc plated carbon steel handle pins, pull rings and safety clips.
- Buna-N gasket included.

VIEW ONLINE



SCAN FOR INFO
or visit

KOA.link.SW-ALD

Part Number	Size (in)	PSI Rating at 70°F	ASTM Specification	Weight Each (lbs)	Standard Carton
SW-ALD150	1 1/2	250	B26 Grade 713	0.81	30
SW-ALD200	2	250	B26 Grade 713	0.99	40
SW-ALD250	2 1/2	250	B26 Grade 713	1.27	35
SW-ALD300	3	250	B26 Grade 713	1.69	20
SW-ALD400	4	150	B26 Grade 713	2.91	10
SW-ALD500	5	150	B26 Grade 713	4.56	10
SW-ALD600	6	150	B26 Grade 713	5.28	10

Because we continually examine ways to improve our products, we reserve the right to alter specifications or discontinue products without prior notice.



BW-SSF Series (316 Stainless Part F)

Male Coupler X Butt Weld

GENERAL APPLICATIONS

Kuriyama Camlock Couplings are intended for use in many industrial applications. To learn more, please refer to pages 296-297 in this catalog.

FEATURES AND ADVANTAGES

- High quality design made to withstand rigorous applications found in industrial markets.
- Stainless steel alloy is analyzed on every melt, and specially designed for high tensile strength, rigidity, and impact resistance.
- BW items are dual purpose which allows them be used as butt weld fittings to schedule 40 pipe and socket weld fittings for nominal OD tubing.

MATERIAL SPECIFICATIONS

- ASTM stainless steel alloy.
- Complies with Mil-Spec A-A-59326 for interchangeability in relevant sizes.

VIEW ONLINE



SCAN FOR INFO
or visit

KOA.link/BW-SSF

Part Number	Size (in)	PSI Rating at 70°F	ASTM Specification	Weight Each (lbs)	Standard Carton
BW-SSF150	1 1/2	250	A666/316	1.40	25
BW-SSF200	2	250	A666/316	1.57	20
BW-SSF250	2 1/2	150	A666/316	2.80	12
BW-SSF300	3	150	A666/316	4.17	8
BW-SSF400	4	150	A666/316	6.57	6
BW-SSF500	5	75	A666/316	8.51	4
BW-SSF600	6	75	A666/316	11.52	2

Because we continually examine ways to improve our products, we reserve the right to alter specifications or discontinue products without prior notice.



BW-SSB Series (316 Stainless Part B)

Female Coupler X Butt Weld

GENERAL APPLICATIONS

Kuriyama Camlock Couplings are intended for use in many industrial applications. To learn more, please refer to pages 296-297 in this catalog.

FEATURES AND ADVANTAGES

- High quality design made to withstand rigorous applications found in industrial markets.
- Stainless steel alloy is analyzed on every melt, and specially designed for high tensile strength, rigidity, and impact resistance.
- BW items are dual purpose which allows them be used as butt weld fittings to schedule 40 pipe and socket weld fittings for nominal OD tubing.

MATERIAL SPECIFICATIONS

- ASTM stainless steel alloy.
- Complies with Mil-Spec A-A-59326 for interchangeability in relevant sizes.
- 304 stainless steel handles, handle pins, pull rings, and safety clips.
- Buna-N gasket included.

VIEW ONLINE



SCAN FOR INFO
or visit

KOA.link/BW-SSB

Part Number	Size (in)	PSI Rating at 70°F	ASTM Specification	Weight Each (lbs)	Standard Carton
BW-SSB150	1 1/2	250	A666/316	1.27	20
BW-SSB200	2	250	A666/316	1.57	20
BW-SSB250	2 1/2	150	A666/316	2.13	12
BW-SSB300	3	150	A666/316	3.21	8
BW-SSB400	4	150	A666/316	5.72	6
BW-SSB500	5	75	A666/316	6.71	4
BW-SSB600	6	75	A666/316	9.13	2

Because we continually examine ways to improve our products, we reserve the right to alter specifications or discontinue products without prior notice.



SW-SSA Series (316 Stainless Part A) Male Coupler X Socket Weld

GENERAL APPLICATIONS

Kuriyama Camlock Couplings are intended for use in many industrial applications. To learn more, please refer to pages 296-297 in this catalog.

FEATURES AND ADVANTAGES

- High quality design made to withstand rigorous applications found in industrial markets.
- Stainless steel alloy is analyzed on every melt, and specially designed for high tensile strength, rigidity, and impact resistance.
- Socket weld items are designed for use with schedule 40 pipe.

MATERIAL SPECIFICATIONS

- ASTM stainless steel alloy.
- Complies with Mil-Spec A-A-59326 for interchangeability in relevant sizes.

VIEW ONLINE

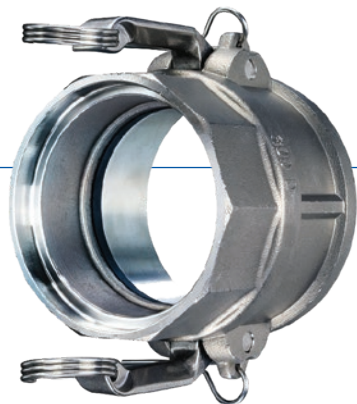


SCAN FOR INFO
or visit

KOA.link/SW-SSA

Part Number	Size (in)	PSI Rating at 70°F	ASTM Specification	Weight Each (lbs)	Standard Carton
SW-SSA150	1 1/2	250	A666/316	0.71	25
SW-SSA200	2	250	A666/316	1.37	12
SW-SSA250	2 1/2	150	A666/316	1.38	12
SW-SSA300	3	150	A666/316	1.87	8
SW-SSA400	4	150	A666/316	3.95	6
SW-SSA500	5	75	A666/316	4.46	4
SW-SSA600	6	75	A666/316	6.16	2

Because we continually examine ways to improve our products, we reserve the right to alter specifications or discontinue products without prior notice.


VIEW ONLINE


SCAN FOR INFO
or visit

KOA.link/SW-SSD

SW-SSD Series (316 Stainless Part D)

Female Coupler X Socket Weld

GENERAL APPLICATIONS

Kuriyama Camlock Couplings are intended for use in many industrial applications. To learn more, please refer to pages 296-297 in this catalog.

FEATURES AND ADVANTAGES

- High quality design made to withstand rigorous applications found in industrial markets.
- Stainless steel alloy is analyzed on every melt, and specially designed for high tensile strength, rigidity, and impact resistance.
- Socket weld items are designed for use with schedule 40 pipe.

MATERIAL SPECIFICATIONS

- ASTM stainless steel alloy.
- Complies with Mil-Spec A-A-59326 for interchangeability in relevant sizes.
- 304 stainless steel handles, handle pins, pull rings, and safety clips.
- Buna-N gasket included.

Part Number	Size (in)	PSI Rating at 70°F	ASTM Specification	Weight Each (lbs)	Standard Carton
SW-SSD150	1 1/2	250	A666/316	1.41	30
SW-SSD200	2	250	A666/316	1.70	40
SW-SSD250	2 1/2	250	A666/316	2.35	35
SW-SSD300	3	250	A666/316	3.30	20
SW-SSD400	4	150	A666/316	5.32	10
SW-SSD500	5	150	A666/316	7.81	10
SW-SSD600	6	150	A666/316	20.79	10

Because we continually examine ways to improve our products, we reserve the right to alter specifications or discontinue products without prior notice.