

INDUSTRIAL HOSE AND COUPLINGS FOR FACILITIES MAINTENANCE

**MANUFACTURING
FOOD AND BEVERAGE
FOUNDRIES
PHARMACEUTICALS
PLASTICS AND CHEMICALS
STEEL MILLS**



INDUSTRIAL HOSE AND COUPLINGS FOR FACILITIES MAINTENANCE

Index

Acid & Chemical Transfer

Alfagomma® T5050G Series	16
Alfagomma® T5090E Series	16
Kuri Tec® A4143 Series.....	16

Air & Water Hoses

Kuri Tec® Polyair® HS113_ Series	3
Kuri Tec® HS117_ Series	3
Kuri Tec® HS118_ Series	3
Kuri Tec® HS509_ Series.....	4
Kuri Tec® HSC284_ Series	4
Kuri Tec® Tundra-Air K123_ Series	4
Redi-GP™ REGP Series	5
Redi-Mor™ MORGP Series	5
Redi-Wash™ REDIWASH Series.....	5

Bulk Material Transfer Hoses

Hose Tec® HTS4200 Series	21
Hose Tec® HTSS5180 Series.....	21
Tigerflex™ 2020™ Series.....	20
Tigerflex™ STIG™ Series.....	21
Tigerflex™ VLT-SD™ Series.....	20

Clamps

SDBC Series	26
SDBC-SS Series	26

Couplings

Combination Nipples.....	23
Part A Male Adapter x Female NPT	24
Part B Female Coupler x Male NPT	24
Part C Female Coupler x Hose Shank	24
Part D Female Coupler x Female NPT	25
Part E Male Adapter x Hose Shank.....	25
Part F Male Adapter x Male NPT	25
Quick Disconnects	23

Dry Material Transfer Hoses

Tigerflex™ THT™ Series.....	12
Tigerflex™ TR1™ Series	12
Tigerflex™ UF1™ Series	12

Ducting Hoses

Flexair™ URE-BK Series	13
Flexair™ URE-CL Series	13
Flexair™ UREH-CL Series.....	13
Neo-Duct® SDH Series.	15
SIL-Duct® HTNP Series	15
Tiger Duct® Extendo-Duct® EDW Series....	14
Tigerflex™ GT Series	14
Tigerflex™ GTFE Series	14

Food and Dry Material Transfer Hoses

Tigerflex™ 2001™ Series	11
Tigerflex™ VOLT™ Series	11
Tigerflex™ WE™ Series	10
Tigerflex™ WT™ Series	10

Food Grade Liquid Transfer Tubing and Hoses

Alfagomma® T400LL Series	9
Kuri Tec® K010 Series.....	6
Kuri Tec® K3150 Series.....	7
Kuri Tec® K7160 Series	8
Kuri Tec® K7300 Series	8
Tigerflex™ FT™ Series	9
Tigerflex™ WSTF Series	9

Hose Selection Guide – STAMPED 27

Miscellaneous Hoses

Alfagomma® T350LL Series.....	22
Alfagomma® T351LL Series	22

Water and Irrigation Hoses

Alfagomma® T202AA Series	18
Double Jacket Mill Discharge.....	19
Ironsides® IS™ Series	19
Kuri Tec® K9296 Series	18
Kuri Tec® K9593 Series	18
Tigerflex™ JT™ Series.....	17
Tigerflex™ ORV™ Series	17
Tigerflex™ WST™ Series.....	17
Vinylflow® VF™ Series.....	19

Note: Hose working pressures are application and temperature dependant

**For additional information on these or other hose and couplings contact us at
sales@kuriyama.com or visit us at: www.kuriyama.com**

The trademarks contained in this publication are trademarks of Kuriyama of America, Inc.
The "Alfagomma" trademark contained in this publication is a registered trademark of Alfagomma S.p.A.

INDUSTRIAL HOSE AND COUPLINGS FOR FACILITIES MAINTENANCE

Air Tool Hose Assemblies

Kuri Tec® Polyair® Multi-Purpose PVC Air Tool Hose Assemblies

General Applications: Pneumatic air tools

Construction: PVC tube and cover with high tensile strength yarn.

Service Temperature Range: -40°F (-40°C) to +150°F (+65°C)

Hose Ends: **1/4" ID:** 1/4" X 1/4" Male NPT, **5/16" ID:** 5/16" X 1/4" Male NPT, **3/8" ID:** 3/8" X 1/4" Male NPT, **1/2" ID:** 1/2" X 1/2" Male NPT, **5/8" ID:** 5/8" X 3/4" Male NPT, **3/4" ID:** 3/4" X 3/4" Male NPT, **1" ID:** 1" X 1" Male NPT



Standard Stock Colors				Size Code	Hose Inner Diameter (in)	Working Pressure (psi) at 70°F	Assembled Lengths (ft)
HS1131 Yellow	HS1134 Red	HS1136 Blue	HS1138 Grey				
✓	✓	✓	✓	04	1/4	300	25/50/100
✓	✓	✓	✓	06	3/8	300	25/50/100
✓	✓	✓	✓	08	1/2	300	25/50/100
✓	✓	✓	✓	12	3/4	250	25/50/100
✓	✓	✓	✓	16	1	250	25/50/100

Kuri Tec® General Service PVC Air Tool Hose Assemblies

General Applications: Pneumatic air tools

Construction: PVC tube and cover with high tensile strength yarn.

Service Temperature Range: -15°F (-26°C) to +150°F (+65°C)

Hose Ends: **1/4" ID:** 1/4" X 1/4" Male NPT, **3/8" ID:** 3/8" X 1/4" Male NPT, **1/2" ID:** 1/2" X 3/8" Male NPT



Standard Stock Colors			Size Code	Hose Inner Diameter (in)	Working Pressure (psi) at 70°F	Assembled Lengths (ft)
HS1171 Yellow	HS1174 Red	HS1176 Blue				
✓	✓	✓	04	1/4	300	25/50/100
✓	✓	✓	06	3/8	300	25/50/100
✓	✓	✓	08	1/2	300	25/50/100

Kuri Tec® Utility Grade PVC Air Tool Hose Assemblies

General Applications: Pneumatic air tools

Construction: PVC tube and cover with high tensile strength yarn.

Service Temperature Range: +14°F (-10°C) to +150°F (+65°C)

Hose Ends: **1/4" ID:** 1/4" X 1/4" Male NPT, **3/8" ID:** 3/8" X 1/4" Male NPT

Standard Stock Colors			Size Code	Hose Inner Diameter (in)	Working Pressure (psi) at 70°F	Assembled Lengths (ft)
HS1181 Yellow	HS1184 Red	HS1186 Blue				
✓	✓	✓	04	1/4	300	25/50/100
✓	✓	✓	06	3/8	300	25/50/100



INDUSTRIAL HOSE AND COUPLINGS FOR FACILITIES MAINTENANCE

Air Tool Hose Assemblies

Kuri Tec® Tundra-Air® Low Temperature PVC Air Tool Hose Assemblies

General Applications: Pneumatic air tools

Construction: PVC tube and cover with high tensile strength yarn.

Service Temperature Range: -65°F (-54°C) to +150°F (+65°C)

Hose Ends: 1/4" ID: 1/4" X 1/4" Male NPT, 3/8" ID: 3/8" X 1/4" Male NPT, 1/2" ID: 1/2" X 3/8" Male NPT

Standard Stock Colors			Size Code	Hose Inner Diameter (in)	Working Pressure (psi) at 70°F	Assembled Lengths (ft)
HS1231 Yellow	HS1234 Red	HS1236 Blue				
✓	✓	✓	04	1/4	300	25/50/100
✓	✓	✓	06	3/8	300	25/50/100
✓	✓	✓	08	1/2	300	25/50/100

TUNDRA AIR™

Flexible to
-65°F!



Kuri Tec® Pneu-Thane Low Temperature Polyurethane Air Tool Hose Assemblies

General Applications: Pneumatic air tools

Construction: Polyurethane tube and cover with high tensile strength yarn.

Service Temperature Range: -40°F (-40°C) to +185°F (+85°C)

Hose Ends: 1/4" ID: 1/4" X 1/4" Male NPT, 3/8" ID: 3/8" X 1/4" Male NPT

Standard Stock Colors			Size Code	Hose Inner Diameter (in)	Working Pressure (psi) at 70°F	Assembled Lengths (ft)
HS5090 Aqua	HS5094 Red	HS5096 Blue				
✓	✓	✓	04	1/4	250	25/50/100
✓	✓	✓	06	3/8	250	25/50/100



Kuri Tec® Ether Based Polyurethane Self-Store Air Tool Coil Assemblies

General Applications: Pneumatic air tools

Construction: Ether based polyurethane tube with 4" pigtail and 20" whip end.

Service Temperature Range: -40°F (-40°C) to +175°F (+80°C)

Hose Ends: 1/4" ID: 1/4" X 1/4" Male NPT swivel, 3/8" ID: 3/8" X 1/4" Male NPT swivel

Standard Stock Colors				Size Code X Length	Hose Inner Diameter (in)	Working Pressure (psi) at 70°F	Working Length (ft)
HSC2841 Yellow	HSC2844 Red	HSC2846 Blue	HSC2840 Blue Tint				
✓	✓	✓	✓	04 X 10	1/4	125	8
✓	✓	✓	✓	04 X 15	1/4	125	12
✓	✓	✓	✓	04 X 20	1/4	125	16
✓	✓	✓	✓	04 X 25	1/4	125	20
✓	✓	✓	✓	04 X 30	1/4	125	24
✓	✓	✓	✓	04 X 50	1/4	125	40
✓	✓	✓	✓	06 X 10	3/8	125	8
✓	✓	✓	✓	06 X 15	3/8	125	12
✓	✓	✓	✓	06 X 20	3/8	125	16
✓	✓	✓	✓	06 X 25	3/8	125	20
✓	✓	✓	✓	06 X 30	3/8	125	24
✓	✓	✓	✓	06 X 50	3/8	125	40



INDUSTRIAL HOSE AND COUPLINGS FOR FACILITIES MAINTENANCE

Air & Water Hoses

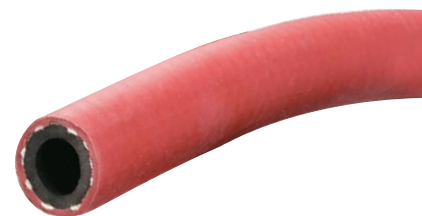
Redi-GP™ General Purpose Air & Water Hose

General Applications: In-plant, construction and agricultural applications

Construction: EPDM tube and cover with high tensile strength yarn.

Service Temperature Range: -40°F (-40°C) to +212°F (+100°C)

Part Number	Hose Inner Diameter (in)	Length (ft)	Working Pressure (psi) at 70°F
REGP-025X25	1/4	25	250
REGP-025X50	1/4	50	250
REGP-025X700	1/4	700	250
REGP-038X25	3/8	25	250
REGP-038X50	3/8	50	250
REGP-038X700	3/8	700	250
REGP-050X25	1/2	25	250
REGP-050X50	1/2	50	250
REGP-050X700	1/2	700	250
REGP-075X25	3/4	25	250
REGP-075X50	3/4	50	250
REGP-075X700	3/4	700	250



Good to
200°F!

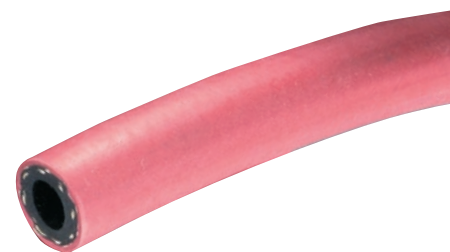
Redi-MOR™ Medium Oil-Resistant General Service Hose

General Applications: In-plant, air tool and oil mist applications

Construction: Rubber tube (Class C oil resistant) and cover with high tensile strength yarn.

Service Temperature Range: -40°F (-40°C) to +212°F (+100°C)

Part Number	Hose Inner Diameter (in)	Length (ft)	Working Pressure (psi) at 70°F
MORGP-038X25	3/8	25	300
MORGP-038X50	3/8	50	300
MORGP-038X700	3/8	700	300
MORGP-050X25	1/2	25	300
MORGP-050X50	1/2	50	300
MORGP-050X700	1/2	700	300
MORGP-075X25	3/4	25	250
MORGP-075X50	3/4	50	250
MORGP-075X700	3/4	700	250



Good to
200°F!

Redi-Wash™ Contractor's Water Hose Assemblies

General Applications: Plant washdown

Construction: Black EPDM tube with polyester yarn.

Service Temperature Range: -40°F (-40°C) to +180°F (+82°C)

Hose Ends: 5/8" X 5/8" Brass GHT Male X Female

Part Number	Hose Inner Diameter (in)	Length (ft)	Working Pressure (psi) at 70°F
REDIWASH-062X50	5/8	50	150



INDUSTRIAL HOSE AND COUPLINGS FOR FACILITIES MAINTENANCE

Food Grade Liquid Transfer Tubing

Kuri Tec® Klearon™ 73 Clear Food Grade PVC Tubing

General Applications: Transfer of food, potable water and beverages

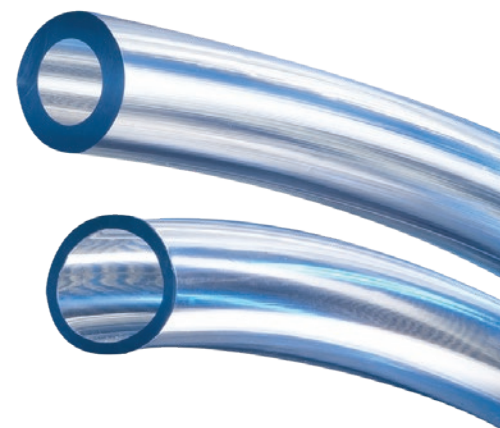
Construction: PVC tube.

Compliances: 3A, FDA, NSF, RoHS, UL, USDA, USP

Service Temperature Range: +25°F (-4°C) to +150°F (+65°C)



Part Number	Tubing Inner Diameter		Tubing Outer Diameter		Nominal Wall		Standard Length Ctn/Coils (ft)	Working Pressure (psi) at 70°F (20°C)
	(in)	(mm)	(in)	(mm)	(in)	(mm)		
K010-0204X100	1/8	3.2	1/4	6.4	1/16	1.6	100	65
K010-0304X100	3/16	4.8	1/4	6.4	1/32	0.8	100	50
K010-0305X100	3/16	4.8	5/16	7.9	1/16	1.6	100	55
K010-0306X100	3/16	4.8	3/8	9.5	3/32	2.4	100	60
K010-0406X100	1/4	6.4	3/8	9.5	1/16	1.6	100	55
K010-0407X100	1/4	6.4	7/16	11.1	3/32	2.4	100	58
K010-0408X100	1/4	6.4	1/2	12.7	1/8	3.2	100	60
K010-0507X100	5/16	7.9	7/16	11.1	1/16	1.6	100	50
K010-0508X100	5/16	7.9	1/2	12.7	3/32	2.4	100	55
K010-0509X100	5/16	7.9	9/16	14.3	1/8	3.2	100	60
K010-0608X100	3/8	9.5	1/2	12.7	1/16	1.6	100	45
K010-0609X100	3/8	9.5	9/16	14.3	3/32	2.4	100	50.
K010-0610X100	3/8	9.5	5/8	15.9	1/8	3.2	100	55
K010-0709X100	7/16	11.1	9/16	14.3	1/16	1.6	100	35
K010-0810X100	1/2	12.7	5/8	15.9	1/16	1.6	100	30
K010-0811X100	1/2	12.7	11/16	17.5	3/32	2.4	100	40
K010-0812X100	1/2	12.7	3/4	19.1	1/8	3.2	100	45
K010-1012X100	5/8	15.9	3/4	19.1	1/16	1.6	100	25
K010-1013X100	5/8	15.9	13/16	20.6	3/32	2.4	100	35
K010-1014X100	5/8	15.9	7/8	22.2	1/8	3.2	100	40
K010-1216X100	3/4	19.1	1	25.4	1/8	3.2	100	35
K010-1218X100	3/4	19.1	1 1/8	28.6	3/16	4.8	100	40
K010-1220X100	3/4	19.1	1 1/4	31.8	1/4	6.4	100	45
K010-1418X100	7/8	22.2	1 1/8	28.6	1/8	3.2	100	30
K010-1420X100	7/8	22.2	1 1/4	31.8	3/16	4.8	100	35
K010-1620X100	1	25.4	1 1/4	31.8	1/8	3.2	100	25
K010-1622X100	1	25.4	1 3/8	34.9	3/16	4.8	100	30
K010-1624X100	1	25.4	1 1/2	38.1	1/4	6.4	100	35
K010-2024X100	1 1/4	31.8	1 1/2	38.1	1/8	3.2	50	20
K010-2026X100	1 1/4	31.8	1 5/8	41.3	3/16	4.8	50	30
K010-2028X100	1 1/4	31.8	1 3/4	44.5	1/4	6.4	50	40
K010-2430X100	1 1/2	38.1	1 7/8	47.6	3/16	4.8	50	30
K010-2432X100	1 1/2	38.1	2	50.8	1/4	6.4	50	35
K010-3240X50	2	50.8	2 1/2	63.5	1/4	6.4	50	35



Available in different wall thicknesses for different pressure requirements.

INDUSTRIAL HOSE AND COUPLINGS FOR FACILITIES MAINTENANCE

Food Grade Liquid Transfer Hoses

Kuri Tec® Clearbraid® Food & Beverage Hose

General Applications: Transfer of food, potable water and beverages

Construction: PVC tube and cover with high tensile strength yarn.

Service Temperature Range: +25°F (-4°C) to +150°F (+65°C)

Compliances: 3A, FDA, NSF, RoHS, USDA, USP

**Phthalate
FREE**



Part Number	Hose Inner Diameter (in)	Length (ft)	Working Pressure (psi) at 70°F
K3150-03X100	3/16	100	250
K3150-03X300	3/16	300	250
K3150-04X100	1/4	100	250
K3150-04X300	1/4	300	250
K3150-05X100	5/16	100	250
K3150-05X300	5/16	300	250
K3150-06X100	3/8	100	225
K3150-06X300	3/8	300	225
K3150-08X100	1/2	100	200
K3150-08X300	1/2	300	200
K3150-10X100	5/8	100	200
K3150-10X200	5/8	200	200
K3150-12X100	3/4	100	150
K3150-12X200	3/4	200	150
K3150-16X100	1	100	125
K3150-16X200	1	200	125
K3150-20X50	1 1/4	50	100
K3150-20X100	1 1/4	100	100
K3150-24X50	1 1/2	50	100
K3150-24X100	1 1/2	100	100
K3150-32X50	2	50	75
K3150-32X100	2	100	75
K3150-MM04X100	4 mm	100	250
K3150-MM06X100	6 mm	100	250
K3150-MM08X100	8 mm	100	250
K3150-MM10X100	10 mm	100	225
K3150-MM12X100	12 mm	100	200
K3150-MM19X100	19 mm	100	150



INDUSTRIAL HOSE AND COUPLINGS FOR FACILITIES MAINTENANCE

Food Grade Liquid Transfer Hoses

Kuri Tec® Polyspring® Food & Beverage Hose

General Applications: Transfer of food, potable water and beverages

Construction: PVC tube with steel wire helix.

Service Temperature Range: +25°F (-4°C) to +150°F (+65°C)

Compliances: 3A, FDA, NSF, RoHS, USDA, USP

Part Number	Hose Inner Diameter (in)	Length (ft)	Working Pressure (psi) at 70°F
K7160-04X50	1/4	50	150
K7160-04X100	1/4	100	150
K7160-06X50	3/8	50	100
K7160-06X100	3/8	100	100
K7160-08X50	1/2	50	100
K7160-08X100	1/2	100	100
K7160-10X50	5/8	50	100
K7160-10X100	5/8	100	100
K7160-12X50	3/4	50	70
K7160-12X100	3/4	100	70
K7160-16X50	1	50	70
K7160-16X100	1	100	70
K7160-20X50	1 1/4	50	70
K7160-24X50	1 1/2	50	50
K7160-32X50	2	50	50
K7160-36X50	2 1/4	50	50
K7160-40X50	2 1/2	50	50
K7160-48X25	3	25	50
K7160-48X50	3	50	50

 **Phthalate
FREE**



Kuri Tec® Polywire® Plus Suction & Discharge Food & Beverage Hose

General Applications: Transfer of food, potable water and beverages

Construction: PVC tube with steel wire helix & high tensile strength yarn.

Service Temperature Range: +15°F (-9°C) to +150°F (+65°C)

Compliances: 3A, FDA, NSF, RoHS, USDA

Part Number	Hose Inner Diameter (in)	Length (ft)	Working Pressure (psi) at 70°F
K7300-08X25	1/2	25	250
K7300-08X50	1/2	50	250
K7300-08X100	1/2	100	250
K7300-12X25	3/4	25	225
K7300-12X50	3/4	50	225
K7300-12X100	3/4	100	225
K7300-16X25	1	25	225
K7300-16X50	1	50	225
K7300-16X100	1	100	225
K7300-20X25	1 1/4	25	175
K7300-20X50	1 1/4	50	175
K7300-24X25	1 1/2	25	175
K7300-24X50	1 1/2	50	175
K7300-32X25	2	25	150
K7300-32X50	2	50	150

 **Phthalate
FREE**



INDUSTRIAL HOSE AND COUPLINGS FOR FACILITIES MAINTENANCE

Food Grade Liquid Transfer Hoses

Tigerflex™ Food Grade Liquid Suction Hose

General Applications: Food grade liquids such as potable water, wine & juice

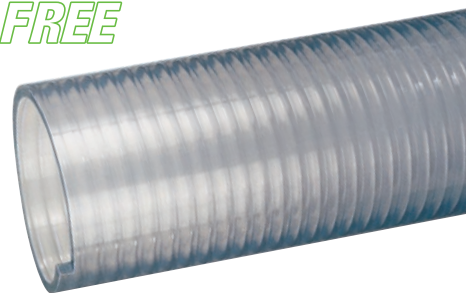
Construction: PVC tube with rigid PVC helix.

Service Temperature Range: -4°F (-20°C) to +150°F (+65°C)

Compliances: 3A, FDA, RoHS, USDA

Part Number	Hose Inner Diameter (in)	Length (ft)	Working Pressure (psi) at 68°F
FT075X100	3/4	100	115
FT100X100	1	100	100
FT125X100	1 1/4	100	90
FT150X100	1 1/2	100	85
FT200X100	2	100	85
FT250X100	2 1/2	100	65
FT300X100	3	100	55
FT400X100	4	100	50
FT500X50	5	50	40
FT600X50	6	50	30
FT800X20	8	20	25

 **Phthalate
FREE**



Tigerflex™ Food Grade Liquid Suction & Discharge Hose

General Applications: Food grade liquids such as potable water, wine & juice

Construction: PVC tube with rigid PVC helix and fabric reinforcement.

Service Temperature Range: -4°F (-20°C) to +150°F (+65°C)

Compliances: 3A, FDA, RoHS, USDA

Part Number	Hose Inner Diameter (in)	Length (ft)	Working Pressure (psi) at 68°F
WSTF150X100	1 1/2	100	110
WSTF200X100	2	100	100
WSTF300X100	3	100	100
WSTF400X100	4	100	75
WSTF600X100	6	100	70

 **Phthalate
FREE**



Alfagomma® Heavy Duty Suction & Discharge Food Grade Oil Resistant Hose

General Applications: Transfer of fatty, oily and alcoholic liquids*

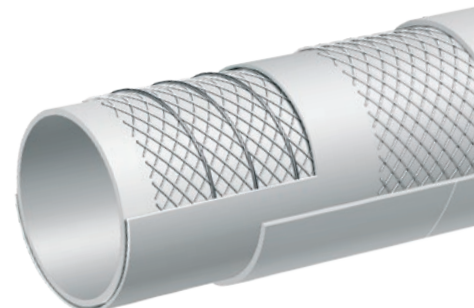
Construction: NBR/PVC cover, NBR tube, high tensile braid and steel helix wires.

Services Temperature Range: Liquid Foods: -22°F (-30°C) to +176°F (+80°C)
Fat Foods: -22°F (-30°C) to +248°F (+120°C)

Compliances: 3A, FDA

*Up to 75 proof

Part Number	Hose Inner Diameter (in)	Length (ft)	Working Pressure (psi) at 68°F
T400LL100X100	1	100	150
T400LL150X100	1 1/2	100	150
T400LL200X100	2	100	150
T400LL300X100	3	100	150
T400LL400X100	4	100	150



INDUSTRIAL HOSE AND COUPLINGS FOR FACILITIES MAINTENANCE

Food And Dry Material Transfer Hoses

Tigerflex™ Food Grade PVC Material Handling Hose

General Applications: Food processing, manufacturing, pharmaceuticals, plastics, poultry

Construction: PVC tube with rigid PVC helix.

Service Temperature Range: -4°F (-20°C) to +150°F (+65°C)

Compliances: 3A, FDA, RoHS, USDA

Part Number	Hose Inner Diameter (in)	Length (ft)	Working Pressure (psi) at 68°F
WT100X100	1	100	55
WT125X100	1 1/4	100	50
WT150X100	1 1/2	100	50
WT200X50	2	50	40
WT225X100	2 1/4	100	40
WT250X100	2 1/2	100	40
WT300X100	3	100	40
WT350X100	3 1/2	100	35
WT400X100	4	100	35
WT400x50	4	50	35
WT500X20	5	20	30
WT600X20	6	20	30
WT800X50	8	50	20
WT45MX100	45 mm	100	45
WT57MX100	57 mm	100	40
WT60Mx100	60 mm	100	40

 **Phthalate
FREE**



Tigerflex™ Food Grade PVC Material Handling Hose with Grounding Wire

General Applications: Food processing, manufacturing, pharmaceuticals, plastics, poultry

Construction: PVC tube with rigid PVC helix.

Service Temperature Range: -4°F (-20°C) to +150°F (+65°C)

Compliances: FDA, RoHS, USDA

Part Number	Hose Inner Diameter (in)	Length (ft)	Working Pressure (psi) at 68°F
WE125X100	1 1/4	100	50
WE150X100	1 1/2	100	50
WE200X100	2	100	40
WE225X100	2 1/4	100	40
WE250X100	2 1/2	100	40
WE300X100	3	100	40
WE350X100	3 1/2	100	35
WE400X100	4	100	35
WE500X20	5	20	30
WE600X20	6	20	30
WE800X20	8	20	20
WE45MX100	45 mm	100	45
WE57MX100	57 mm	100	40
WE60Mx100	60 mm	100	40

 **Phthalate
FREE**



INDUSTRIAL HOSE AND COUPLINGS FOR FACILITIES MAINTENANCE

Abrasion Resistant Food And Dry Material Transfer Hoses

Tigerflex™ Food Grade Polyurethane Lined Material Handling Hose

General Applications: Food processing, manufacturing, pharmaceuticals, plastics

Construction: PVC cover, abrasion resistant polyurethane liner, PVC helix and grounding wire.

Service Temperature Range: -40°F (-40°C) to +150°F (+65°C)

Compliances: FDA, RoHS

Part Number	Hose Inner Diameter (in)	Length (ft)	Working Pressure (psi) at 68°F
2001-150X60	1 1/2	60	50
2001-200X60	2	60	40
2001-250X60	2 1/2	60	40
2001-300X60	3	60	40
2001-400X60	4	60	35
2001-500X20	5	20	35
2001-600X20	6	20	30
2001-800X20	8	20	30

 **Phthalate
FREE**



Tigerflex™ Voltbuster™ Highly Static Dissipative Polyurethane Material Handling Hose

General Applications: Food processing, manufacturing, pharmaceuticals, plastics

Construction: Abrasion resistant polyurethane tube, PVC helix and grounding wire.

Service Temperature Range: -40°F (-40°C) to +150°F (+65°C)

Compliances: FDA, RoHS

Part Number	Hose Inner Diameter (in)	Length (ft)	Working Pressure (psi) at 68°F
VOLT150X100	1 1/2	100	40
VOLT150X60	1 1/2	60	40
VOLT200X100	2	100	40
VOLT200X60	2	60	40
VOLT250X100	2 1/2	100	40
VOLT300X100	3	100	40
VOLT400X100	4	100	35
VOLT400X20	4	20	35
VOLT500X20	5	20	35
VOLT600X20	6	20	30
VOLT800X20	8	20	30

 **Phthalate
FREE**



INDUSTRIAL HOSE AND COUPLINGS FOR FACILITIES MAINTENANCE

Heavy Duty Dry Material Transfer Hoses

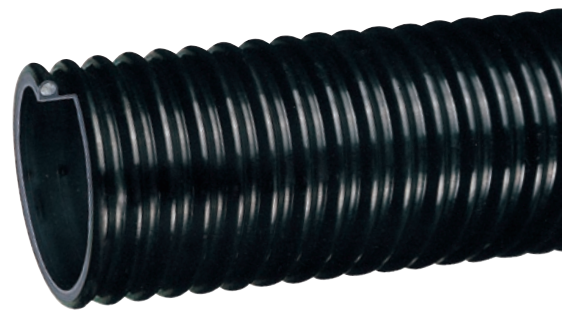
Tigerflex™ Ureflex™ Heavy Duty Polyurethane Lined Material Handling Hose

General Applications: Abrasive material handling

Construction: PVC cover, polyurethane liner and PVC helix.

Service Temperature Range: -40°F (-40°C) to +150°F (+65°C)

Part Number	Hose Inner Diameter (in)	Length (ft)	Working Pressure (psi) at 68°F
UF1-125X100	1 1/4	100	50
UF1-150X100	1 1/2	100	50
UF1-200X100	2	100	40
UF1-250X100	2 1/2	100	40
UF1-300X100	3	100	40
UF1-350X100	3 1/2	100	35
UF1-400X100	4	100	35
UF1-500X20	5	20	35
UF1-600X20	6	20	30
UF1-800X20	8	20	30
UF1-1000X20	10	20	22



Tigerflex™ Tiger-TR1™ Heavy Duty SBR Wet or Dry Material Handling Hose

General Applications: Wet or dry abrasive material handling, plant vac systems

Construction: SBR tube with PVC helix.

Service Temperature Range: -40°F (-40°C) to +150°F (+65°C)

Part Number	Hose Inner Diameter (in)	Length (ft)	Working Pressure (psi) at 68°F
TR1-150X100	1 1/2	100	35
TR1-200X100	2	100	32
TR1-250X100	2 1/2	100	30
TR1-300X100	3	100	28
TR1-400X100	4	100	26
TR1-500X20	5	20	21
TR1-600X20	6	20	19
TR1-800X20	8	20	19



Tigerflex™ Tiger™ HiTemp Wire Reinforced EPDM Wet or Dry Material Handling Hose

General Applications: Fly ash collection

Construction: EPDM tube with polyethylene helix with steel helical wire.

Service Temperature Range: -40°F (-40°C) to +220°F (+104°C)

Part Number	Hose Inner Diameter (in)	Length (ft)	Working Pressure (psi) at 68°F
THT400X100	4	100	29
THT600X20	6	20	19
THT800X20	8	20	14

Good to
220°F!



INDUSTRIAL HOSE AND COUPLINGS FOR FACILITIES MAINTENANCE

Ducting Hoses

Flexair™ Urevent™ Clear Food Grade Polyurethane Ducting/Material Handling Hose

General Applications: In plant transfer of dry materials and powders

Construction: Ether polyurethane tube with steel wire helix.

Service Temperature Range: -65°F (-54°C) to +225°F (+107°C)

Compliances: FDA, ROHS

Part Number	Hose Inner Diameter (in)	Length (ft)	Working Pressure (psi) at 68°F
URE-CL200X25	2	25	31
URE-CL250X25	2 1/2	25	31
URE-CL300X25	3	25	30
URE-CL400X25	4	25	26
URE-CL500X25	5	25	22
URE-CL600X25	6	25	20
URE-CL800X25	8	25	14
URE-CL1000X25	10	25	11
URE-CL1200X25	12	25	10

 **Phthalate
FREE**



Flexair™ Urevent™ Black Polyurethane Ducting/Material Handling Hose

General Applications: In plant transfer of dry materials and powders

Construction: Ether polyurethane tube with steel wire helix.

Service Temperature Range: -65°F (-54°C) to +225°F (+107°C)

Part Number	Hose Inner Diameter (in)	Length (ft)	Working Pressure (psi) at 68°F
URE-BK200X25	2	25	31
URE-BK250X25	2 1/2	25	31
URE-BK300X25	3	25	30
URE-BK400X25	4	25	26
URE-BK500X25	5	25	22
URE-BK600X25	6	25	20
URE-BK800X25	8	25	14
URE-BK1000X25	10	25	11
URE-BK1200X25	12	25	10



 **Phthalate
FREE**



Flexair™ Urevent™ Clear Heavy Duty Food Grade Polyurethane Material Handling Hose

General Applications: In plant transfer of dry materials and powders

Construction: Ether polyurethane tube with steel wire helix.

Service Temperature Range: -65°F (-54°C) to +225°F (+107°C)

Compliances: FDA, ROHS

Part Number	Hose Inner Diameter (in)	Length (ft)	Working Pressure (psi) at 68°F
UREH-CL400X25	4	25	26
UREH-CL500X25	5	25	22
UREH-CL600X25	6	25	20
UREH-CL800X25	8	25	14
UREH-CL1000X25	10	25	11
UREH-CL1200X25	12	25	10

INDUSTRIAL HOSE AND COUPLINGS FOR FACILITIES MAINTENANCE

Ducting Hoses

Tigerflex™ Ducting/Light Material Handling Hose

General Applications: Ducting, ventilation and fume removal

Construction: PVC tube with rigid PVC helix.

Service Temperature Range: -4°F (-20°C) to +150°F (+65°C)

Part Number	Hose Inner Diameter (in)	Length (ft)	Working Pressure (psi) at 68°F
GT150X100	1 1/2	100	20
GT200X100	2	100	15
GT250X100	2 1/2	100	10
GT300X100	3	100	10
GT350X100	3 1/2	100	9
GT400X100	4	100	8
GT500X100	5	100	7
GT600X50	6	50	6
GT800X50	8	50	4
GT1000X50	10	50	2



Tigerflex™ Food Grade Ducting/Light Material Handling Hose

General Applications: Ducting, ventilation and fume removal

Construction: PVC tube with rigid PVC helix and grounding wire.

Service Temperature Range: -4°F (-20°C) to +150°F (+65°C)

Compliances: 3A, FDA, RoHS, USDA

Part Number	Hose Inner Diameter (in)	Length (ft)	Working Pressure (psi) at 68°F
GTFE150X100	1 1/2	100	20
GTFE200X100	2	100	15
GTFE250X100	2 1/2	100	10
GTFE300X100	3	100	10
GTFE400X100	4	100	8
GTFE600X50	6	50	6
GTFE800X50	8	50	4

 **Phthalate
FREE**



Extendo-Duct® Self-Supporting Polypropylene Ducting Hose

General Applications: Ventilation, dust and fume control

Construction: Polypropylene tube with coated steel wire.

Service Temperature Range: -4°F (-20°C) to +175°F (+80°C)

Part Number	Hose Inner Diameter (in)	Length (ft)	Working Pressure (psi) at 68°F
EDW-150X20	1 1/2	20	20
EDW-200X20	2	20	13
EDW-250X20	2 1/2	20	10
EDW-300X20	3	20	10
EDW-400X20	4	20	8
EDW-500X20	5	20	7
EDW-600X20	6	20	6
EDW-800X20	8	20	4
EDW-1000X20	10	20	3
EDW-1200X20	12	20	2

**Maintains
its shape!**



INDUSTRIAL HOSE AND COUPLINGS FOR FACILITIES MAINTENANCE

Ducting Hoses

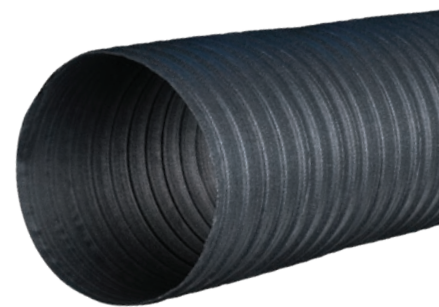
Neo-Duct® Neoprene Ducting Hose

General Applications: Plastic dryers, ventilation, dust and fume control

Construction: Neoprene coated polyester with steel helix.

Service Temperature Range: -65°F (-54°C) to +250°F (+127°C)

Part Number	Hose Inner Diameter (in)	Length (ft)	Working Pressure (psi) at 68°F
HTNP2-150X25	1 1/2	25	32
HTNP2-200X25	2	25	30
HTNP2-250X25	2 1/2	25	28
HTNP2-300X25	3	25	25
HTNP2-350X25	3 1/2	25	24
HTNP2-400X25	4	25	23
HTNP2-500X25	5	25	22
HTNP2-600X25	6	25	21
HTNP2-700X25	7	25	20
HTNP2-800X25	8	25	19
HTNP2-1000X25	10	25	18
HTNP2-1200X25	12	25	17
HTNP2-1400X25	14	25	16
HTNP2-1600X25	16	25	15
HTNP2-1800X25	18	25	6
HTNP2-2000X25	20	25	4



SIL-Duct® Silicone Ducting Hose

General Applications: Plastic dryers, ventilation, dust and fume control

Construction: Silicone coated fiberglass tube and cover with steel helix.

Service Temperature Range: -80°F (-62°C) to +500°F (+260°C)

Part Number	Hose Inner Diameter (in)	Length (ft)	Working Pressure (psi) at 68°F
SDH-100X12	1	12	60
SDH-125X12	1 1/4	12	60
SDH-150X12	1 1/2	12	55
SDH-175X12	1 3/4	12	55
SDH-200X12	2	12	50
SDH-250X12	2 1/2	12	45
SDH-300X12	3	12	45
SDH-350X12	3 1/2	12	40
SDH-400X12	4	12	40
SDH-450X12	4 1/2	12	35
SDH-500X12	5	12	35
SDH-600X12	6	12	30
SDH-800X12	8	12	15



INDUSTRIAL HOSE AND COUPLINGS FOR FACILITIES MAINTENANCE

Acid & Chemical Transfer

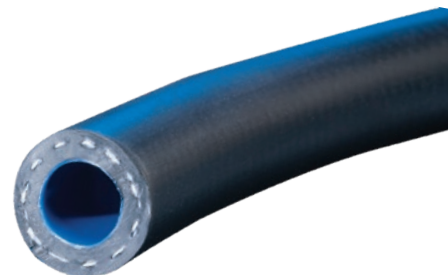
Kuri Tec® Medium Duty Chemical Transfer Hose

General Applications: In-plant transfer of various chemicals

Construction: LLDPE liner with high tensile strength yarn and blended rubber cover.

Service Temperature Range: -40°F (-40°C) to +125°F (+52°C)

Part Number	Hose Inner Diameter (in)	Length (ft)	Working Pressure (psi) at 70°F
A4143-04X100	1/4	100	175
A4143-06X100	3/8	100	175
A4143-08X100	1/2	100	175
A4143-12X100	3/4	100	150
A4143-16X100	1	100	125



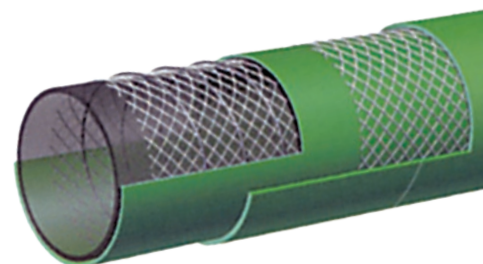
Alfagomma® 240 PSI Acid & Chemical Suction & Discharge Hose

General Applications: Transfer of 90% of existing industrial chemicals and solvents

Construction: XLPE (cross-linked polyethylene) tube, high tensile strength cords, steel helix wires and EPDM cover.

Service Temperature Range: -22°F (-30°C) to +176°F (+80°C)

Part Number	Hose Inner Diameter (in)	Length (ft)	Working Pressure (psi) at 68°F
T5050G075X100	3/4	100	240
T5050G100X100	1	100	240
T5050G150X100	1 1/2	100	240
T5050G200X100	2	100	240
T5050G300X100	3	100	240
T5050G400X100	4	100	240



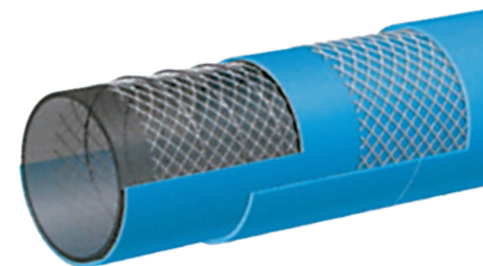
Alfagomma® 240 PSI Acid & Chemical Suction & Discharge Hose

General Applications: Transfer of 98% of existing industrial chemicals and solvents

Construction: UHMWPE (ultra high molecular weight polyethylene) tube, synthetic textile cords, steel helix wires and EPDM cover.

Service Temperature Range: -22°F (-30°C) to +200°F (+93°C)

Part Number	Hose Inner Diameter (in)	Length (ft)	Working Pressure (psi) at 68°F
T5090E075X100	3/4	100	240
T5090E100X100	1	100	240
T5090E150X100	1 1/2	100	240
T5090E200X100	2	100	240
T5090E300X100	3	100	240
T5090E400X100	4	100	240



WARNING! Before using chemical hoses consult Kuri Tec™ and Alfagomma® chemical resistance charts at www.kuriyama.com or consult factory.

INDUSTRIAL HOSE AND COUPLINGS FOR FACILITIES MAINTENANCE

Water and Irrigation Hoses

Tigerflex™ Green PVC Suction Hose

General Applications: Agriculture, construction, contractors, irrigation and rental industries

Construction: PVC tube with rigid PVC helix.

Service Temperature Range: -4°F (-20°C) to +150°F (+65°C)

Part Number	Hose Inner Diameter (in)	Length (ft)	Working Pressure (psi) at 70°F
J075X100	3/4	100	110
J100X100	1	100	85
J125X100	1 1/4	100	85
J150X100	1 1/2	100	70
J200X100	2	100	65
J250X100	2 1/2	100	65
J300X100	3	100	60
J400X100	4	100	50
J600X100	6	100	40
J800X20	8	20	30



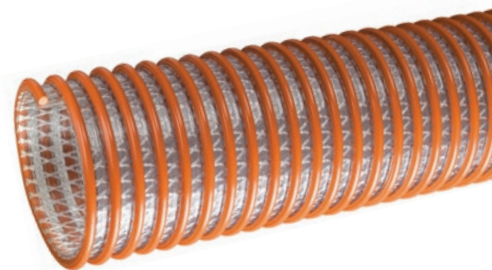
Tigerflex™ Suction & Discharge Hose

General Applications: Agriculture, construction, contractors, irrigation, rental industries and trenching

Construction: PVC tube, polyester fabric reinforcement and rigid PVC helix.

Service Temperature Range: -4°F (-20°C) to +150°F (+65°C)

Part Number	Hose Inner Diameter (in)	Length (ft)	Working Pressure (psi) at 70°F
WST150X100	1 1/2	100	110
WST200X100	2	100	100
WST300X100	3	100	100
WST400X100	4	100	75
WST500X100	5	100	70
WST600X100	6	100	70
WST800X20	8	20	60

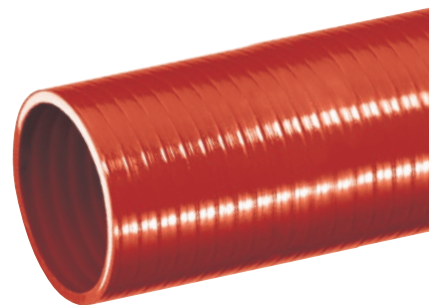


Tigerflex™ Oil Resistant PVC Suction Hose

General Applications: Transfer of oil or oily liquids **Construction:** Oil resistant PVC tube with rigid PVC helix.

Service Temperature Range: +5°F (-15°C) to +150°F (+65°C)*

Part Number	Hose Inner Diameter (in)	Length (ft)	Working Pressure (psi) at 70°F
ORV075X100	3/4	100	100
ORV100X100	1	100	80
ORV150X100	1 1/2	100	60
ORV200X100	2	100	60
ORV300X100	3	100	65



INDUSTRIAL HOSE AND COUPLINGS FOR FACILITIES MAINTENANCE

Heavy Duty Water and Irrigation Hoses

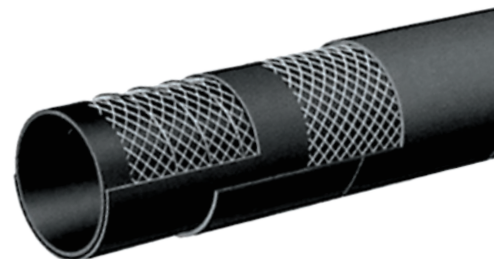
Alfagomma® Heavy Duty Suction & Discharge Hose

General Applications: Agriculture, construction, contractors, irrigation and rental industries

Construction: EPDM tube with high tensile strength textile cords and steel helix wires.

Service Temperature Range: -40°F (-40°C) to +212°F (+100°C)

Part Number	Hose Inner Diameter (in)	Length (ft)	Working Pressure (psi) at 68°F
T202AA150X100	1 1/2	100	150
T202AA200X100	2	100	150
T202AA250X100	2 1/2	100	150
T202AA300X100	3	100	150
T202AA400X100	4	100	150
T202AA500X20	5	20	150
T202AA600X50	6	50	150
T202AA600X20	6	20	150
T202AA800X20	8	20	150
T202AA1000X20	10	20	150
T202AA1200X20	12	20	150



Kuri Tec™ K-Tough™ High Pressure & Vacuum Hose

General Applications: Agriculture, construction, contractors, irrigation and rental industries

Construction: PVC tube, steel wire helix and high tensile strength yarn reinforcement.

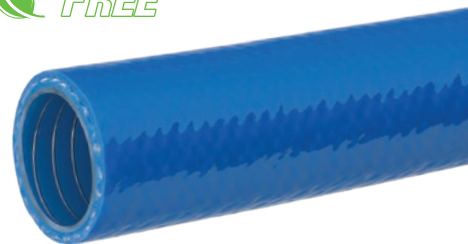
Service Temperature Range: -5°F (-20°C) to +150°F (+65°C)

Compliances: FDA, MSHA, ROHS

Part Number	Hose Inner Diameter (in)	Length (ft)	Working Pressure (psi) at 68°F
K9296-24X100	1 1/2	100	300
K9296-24X50	1 1/2	50	300
K9296-32X100	2	100	275
K9296-32X50	2	50	275
K9296-40X100	2 1/2	100	150
K9296-40X50	2 1/2	50	150
K9296-48X100	3	100	150
K9296-48X50	3	50	150

K-TOUGH™

**Phthalate
FREE**



Kuri Tec™ K-Tough™ Oil High Pressure & Vacuum Hose

General Applications: Transfer of petroleum and other oil based products

Construction: Oil resistant PVC/polyurethane tube, steel wire helix and high tensile strength yarn.

Service Temperature Range: -5°F (-20°C) to +150°F (+65°C)

Compliances: FDA, MSHA, ROHS

Part Number	Hose Inner Diameter (in)	Length (ft)	Working Pressure (psi) at 68°F
K9593-24X50	1 1/2	50	300
K9593-24X100	1 1/2	100	300
K9593-32X50	2	50	275
K9593-32X100	2	100	275
K9593-40X50	2 1/2	50	150
K9593-40X100	2 1/2	100	150
K9593-48X50	3	50	150
K9593-48X100	3	100	150

K-TOUGH™ OIL

**Phthalate
FREE**



INDUSTRIAL HOSE AND COUPLINGS FOR FACILITIES MAINTENANCE

Water and Irrigation Hoses

Vinylflow® PVC Irrigation & Water Discharge Hose

General Applications: Irrigation, construction, industrial and agricultural

Construction: PVC tube and cover, longitudinal strength member and polyester yarn spiral wrap.

Service Temperature Range: -10°F (-12°C) to +140°F (+60°C)

Part Number	Hose Inner Diameter (in)	Length (ft)	Working Pressure (psi) at 68°F
VF150X300	1 1/2	300	80
VF200X300	2	300	80
VF250X300	2 1/2	300	80
VF300X300	3	300	70
VF400X300	4	300	70
VF500X300	5	300	40
VF600X300	6	300	50
VF800X100	8	100	45
VF1000X100	10	100	35
VF1200X100	12	100	30
VF1400X100	14	100	30
VF1600X100	16	100	30

Ironsides® Heavy Duty PVC Irrigation & Water Discharge Hose

General Applications: Irrigation, construction, industrial, mining and agricultural

Construction: PVC tube and cover, longitudinal strength members and spiral plies.

Service Temperature Range: -10°F (-12°C) to +140°F (+60°C)

Compliances: MSHA IC-218/2

Part Number	Hose Inner Diameter (in)	Length (ft)	Working Pressure (psi) at 68°F
IS150X300	1 1/2	300	150
IS200X300	2	300	150
IS250X300	2 1/2	300	150
IS300X300	3	300	150
IS400X300	4	300	125
IS600X300	6	300	115
IS800X100	8	100	70
IS1000X100	10	100	65

Double Jacket Mill Discharge Hose

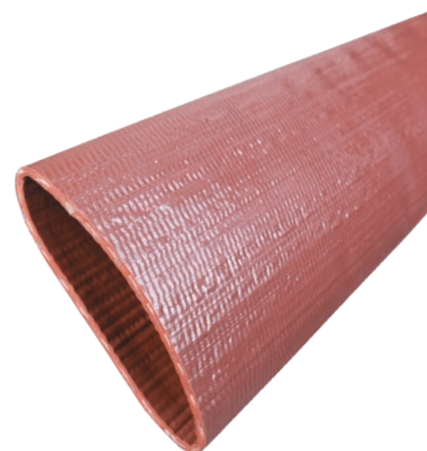
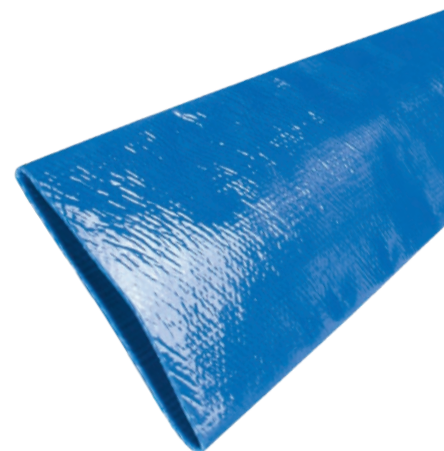
General Applications: Contractors, irrigation, municipal washdown and rental industries

Construction: Double jacket 100% polyester yarn.

Service Temperature Range: -25°F (-31°C) to +185°F (+85°C)

Hose Ends: NST or NPSH threads

Part Number	Hose Inner Diameter (in)	Length (ft)	Working Pressure (psi) at 68°F
Thread Type: NST			
DJ150NSTX50	1 1/2	50	200
DJ250NSTX50	2 1/2	50	200
Thread Type: NPSH			
DJ150NPSHX50	1 1/2	50	200
DJ250NPSHX50	2 1/2	50	200



INDUSTRIAL HOSE AND COUPLINGS FOR FACILITIES MAINTENANCE

Bulk Material Transfer Hoses

Tigerflex™ Heavy Duty Fabric Reinforced Bulk Material Transfer Hose

General Applications: Bulk truck and railcar unloading, heavy duty material handling

Construction: Polyurethane tube and cover, polyester fabric reinforcement, rigid PVC helix and grounding wire.

Service Temperature Range: -40°F (-40°C) to +150°F (+65°C)

Compliances: FDA, RoHS, USDA

Part Number	Hose Inner Diameter (in)	Length (ft)	Working Pressure (psi) at 68°F
2020-200X100	2	100	80
2020-300X100	3	100	70
2020-400X100	4	100	65
2020-400X20	4	20	65
2020-500X20	5	20	45
2020-600X20	6	20	40
2020-800X20	8	20	35

 **Phthalate
FREE**



Tigerflex™ Voltbuster™ Heavy Duty Fabric Reinforced Bulk Material Transfer Hose

General Applications: Bulk truck and railcar unloading, heavy duty material handling

Construction: Polyurethane tube and cover, polyester fabric reinforcement, rigid PVC helix and grounding wire.

Service Temperature Range: -40°F (-40°C) to +150°F (+65°C)

Compliances: FDA, RoHS

Part Number	Hose Inner Diameter (in)	Length (ft)	Working Pressure (psi) at 68°F
VLT-SD200X100	2	100	75
VLT-SD300X100	3	100	70
VLT-SD400X100	4	100	65
VLT-SD400X20	4	20	65
VLT-SD500X20	5	20	45
VLT-SD600X20	6	20	40

 **Phthalate
FREE**



INDUSTRIAL HOSE AND COUPLINGS FOR FACILITIES MAINTENANCE

Bulk Material Transfer Hoses

Hose Tec® Stainless Steel, Unlined Bulk Material Transfer Hose Assemblies

General Applications: Bulk truck and railcar unloading, heavy duty material handling

Construction: Stainless steel tube with stainless steel ends.

Maximum Service Temperature: +1500°F (+815°C)

Hose Ends: Male NPT

Part Number	Hose Inner Diameter (in)	Length (ft)
HTS4200-300X10TOE	3	10
HTS4200-400X10TOE	4	10
HTS4200-500X10TOE	5	10
HTS4200-600X10TOE	6	10

Hose Tec® Stainless Steel, Lined Bulk Material Transfer Hose Assemblies

General Applications: Bulk truck and railcar unloading, heavy duty material handling

Construction: Stainless steel tube with stainless steel ends.

Maximum Service Temperature: +1500°F (+815°C)

Hose Ends: Male NPT

Part Number	Hose Inner Diameter (in)	Length (ft)
HTSS5180-400X10TOE	4	10
HTSS5180-400X12TOE	4	12
HTSS5180-400X15TOE	4	15
HTSS5180-400X19TOE	4	19
HTSS5180-500X15TOE	5	15
HTSS5180-600X10TOE	6	10

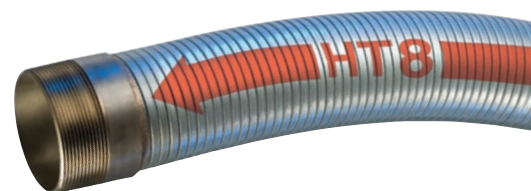
Tigerflex® Silver Tiger™ Extremely Heavy Duty Polyurethane Lined Material Handling Hose

General Applications: Bulk truck and railcar unloading, heavy duty material handling

Construction: PVC cover with extra thick polyurethane liner, rigid PVC helix and grounding wire.

Service Temperature Range: -4°F (-20°C) to +150°F (+65°C)

Part Number	Hose Inner Diameter (in)	Length (ft)	Working Pressure (psi) at 68°F
STIG250X100	2 1/2	100	45
STIG300X100	3	100	45
STIG400X100	4	100	40
STIG400X20	4	20	40
STIG600X20	6	20	35
STIG800X20	8	20	35



Our most
abrasion
resistant non-
metal hose!

INDUSTRIAL HOSE AND COUPLINGS FOR FACILITIES MAINTENANCE

Miscellaneous Hoses

Alfagomma® Facilities Wash-Down Hose

General Applications: General wash down service using hot or cold water or low pressure saturated steam

Construction: EPDM tube and cover with high tensile textile cord reinforcement.

Service Temperature Range: Water -40°F (-40°C) to +248°F (+120°C) Steam +330°F (+165°C)

Part Number	Hose Inner Diameter (in)	Length (ft)	Working Pressure (psi) at 68°F
T350LL050X200	1/2	200	225
T350LL062X200	5/8	200	225
T350LL075X200	3/4	200	225
T350LL100X200	1	200	225

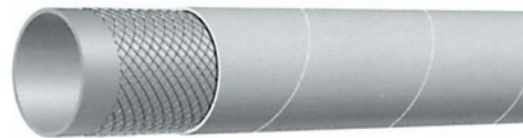
Alfagomma® Facilities Wash-Down Hose with Tapered Nozzle

General Applications: General wash down service using hot or cold water

Construction: EPDM tube and cover with high tensile textile cord reinforcement.

Service Temperature Range: -40°F (-40°C) to +248°F (+120°C)

Part Number	Hose Inner Diameter (in)	Length (ft)	Working Pressure (psi) at 68°F	Nozzle Hole Size (in)
T351LL075X50	3/4	50	150	3/8
T351LL100X50	1	50	150	3/8
T351LL125X50	1 1/4	50	150	1/2
T351LL150X50	1 1/2	50	150	5/8



Couplings



Combination Hose Nipple NPT Threads

Size (in)	Zinc Plated Steel	304 Stainless	316 Stainless
	Part Number	Part Number	Part Number
1/2	SPN050	SSN304-050	SSN050
3/4	SPN075	SSN304-075	SSN075
1	SPN100	SSN304-100	SSN100
1 1/4	SPN125	SSN304-125	SSN125
1 1/2	SPN150	SSN304-150	SSN150
2	SPN200	SSN304-200	SSN200
2 1/2	SPN250	SSN304-250	SSN250
3	SPN300	SSN304-300	SSN081
4	SPN400	SSN304-400	SSN082
6	SPN600	SSN304-600	SSN083



Quick Disconnect Couplings

Body Size (in)	Thread Size (in)	Standard Carton	Male Thread Coupler (NPTF)	Female Thread Coupler (NPTF)
			Part Number	Part Number
1/4	1/4	10	QDAC-4MC	QDAC-4FC
1/4	3/8	10	QDAC-6MC	QDAC-6FC



Quick Disconnect Couplings

Body Size (in)	Thread Size (in)	Standard Carton	Male Thread Coupler (NPTF)	Female Thread Coupler (NPTF)
			Part Number	Part Number
1/4	1/4	10	QDAP-4MP	QDAP-4FP
1/4	3/8	10	QDAP-6MP	QDAP-6FP

INDUSTRIAL HOSE AND COUPLINGS FOR FACILITIES MAINTENANCE

Couplings



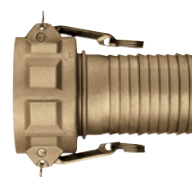
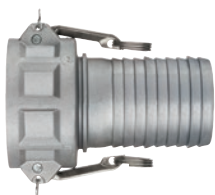
Part A Male Adapter x Female NPT

Size (in)	Aluminum	Stainless Steel	Brass
	Part Number	Part Number	Part Number
2	AL-A200	SS-A200	BR-A200
3	AL-A300	SS-A300	BR-A300
4	AL-A400	SS-A400	BR-A400
6	AL-A600	SS-A600	BR-A600
8	AL-A800	-	-



Part B Female Coupler x Male NPT

Size (in)	Aluminum	Stainless Steel	Brass
	Part Number	Part Number	Part Number
2	AL-B200	SS-B200	BR-B200
3	AL-B300	SS-B300	BR-B300
4	AL-B400	SS-B400	BR-B400
6	AL-B600	SS-B600	BR-B600
8	AL-B800	-	-



Part C Female Coupler x Hose Shank

Size (in)	Aluminum	Stainless Steel	Brass
	Part Number	Part Number	Part Number
2	AL-C200	SS-C200	BR-C200
3	AL-C300	SS-C300	BR-C300
4	AL-C400	SS-C400	BR-C400
6	AL-C600	SS-C600	BR-C600
8	AL-C800	-	-

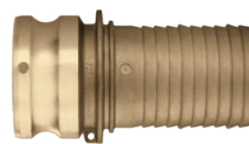
INDUSTRIAL HOSE AND COUPLINGS FOR FACILITIES MAINTENANCE

Couplings



Part D Female Coupler x Female NPT

Size (in)	Aluminum	Stainless Steel	Brass
	Part Number	Part Number	Part Number
2	AL-D200	SS-D200	BR-D200
3	AL-D300	SS-D300	BR-D300
4	AL-D400	SS-D400	BR-D400
6	AL-D600	SS-D600	BR-D600
8	AL-D800	-	-



Part E Male Adapter x Hose Shank

Size (in)	Aluminum	Stainless Steel	Brass
	Part Number	Part Number	Part Number
2	AL-E200	SS-E200	BR-E200
3	AL-E300	SS-E300	BR-E300
4	AL-E400	SS-E400	BR-E400
6	AL-E600	SS-E600	BR-E600
8	AL-E800	-	-



Part F Male Adapter x Male NPT

Size (in)	Aluminum	Stainless Steel	Brass
	Part Number	Part Number	Part Number
2	AL-F200	SS-F200	BR-F200
3	AL-F300	SS-F300	BR-F300
4	AL-F400	SS-F400	BR-F400
6	AL-F600	SS-F600	BR-F600
8	AL-F800	-	-

INDUSTRIAL HOSE AND COUPLINGS FOR FACILITIES MAINTENANCE

Hose Clamps



Zinc Plated Carbon Steel Spiral Double Bolt Clamp (For Counterclockwise Spiral Hoses)
Designed for Tigerflex™ PVC Suction Hoses

Part Number	Size (in)	Torque (ft lbs)	Weight Each (lbs)	Standard Carton
SDBC-1.5	1 1/2	6	0.18	100
SDBC-2	2	6	0.36	100
SDBC-2.25	2 1/4	6	0.40	100
SDBC-2.5	2 1/2	8	0.48	100
SDBC-3	3	8	0.66	70
SDBC-3.5	3 1/2	8	0.70	70
SDBC-4	4	24	1.02	40
SDBC-5	5	24	1.76	30
SDBC-6	6	30	2.00	20
SDBC-8	8	30	2.76	10
SDBC-10	10	30	3.46	10
SDBC-12	12	30	4.14	10



Stainless Steel 304 Spiral Double Bolt Clamp (For Counterclockwise Spiral Hoses)
Designed for Tigerflex™ PVC Suction Hoses

Part Number	Size (in)	Torque (ft lbs)	Weight Each (lbs)	Standard Carton
SDBC-SS-1.5	1 1/2	6	0.20	100
SDBC-SS-2	2	6	0.40	100
SDBC-SS-2.5	2 1/2	6	0.55	70
SDBC-SS-3	3	8	0.73	70
SDBC-SS-3.5	3 1/2	8	0.94	40
SDBC-SS-4	4	24	1.12	40
SDBC-SS-5	5	24	1.94	30
SDBC-SS-6	6	30	2.20	20
SDBC-SS-8	8	30	3.04	10
SDBC-SS-10	10	30	3.81	10
SDBC-SS-12	12	30	4.55	10



THE KURIYAMA VALUE™

**Your “One-Stop-Shop” Hose & Accessory Supplier -
Largest Availability of Products in the Industry**

Hose Selection Guide - STAMPED

S --> Size, Inside/Outside diameter & length

T --> Temperature, minimum & maximum degrees outside and inside hose

A --> Application, how and where the hose is being used and are there any ratings needed (MSHA, FDA, ROHS, etc.)

M --> Media conveyed, air/water/steam/chemicals, etc.

P --> Pressure, PSI or Suction

E --> Ends or Couplings

D --> Delivery, when is the product needed and how much

Company Profile

Company Name _____ Contact _____

Address _____ City _____ State _____ Zip _____

Phone _____ Fax _____ E-mail _____



KURIYAMA
OF AMERICA, INC.



CORPORATE OFFICE

150 N Martingale Road, Suite 900, Schaumburg, IL 60173-2081

Phone: (847) 755-0360 • Toll-free Fax: (800) 800-0320

International Fax: (847) 885-0996



kuriyama.com



sales@kuriyama.com

Cautionary Statement

All Products sold and distributed by Kuriyama of America, Inc. are in the nature of commodities and they are sold by published specifications and not for particular purposes, uses or applications. Purchaser shall first determine their suitability for the intended purposes, uses or applications and shall either conduct its own engineering studies or tests, or retain qualified engineers, consultants or testing laboratories and consult with them before determining the proper use, suitability or propriety of the merchandise or Products for the intended purposes, uses or applications.

Kuriyama of America, Inc. ("Seller") does not recommend the Products for any particular purpose, use or application, and the Purchaser or user thereof shall assume full responsibility for the suitability, propriety, use and application of the Products. Purchaser shall follow all instructions contained in Seller's catalogs, brochures, technical bulletins and other documents regarding the Products. The Products, including but not limited to, hose, tubing or couplings, may fail due to the use or conveyance of substances at elevated or lowered temperatures or at excessive pressure, the conveyance of abrasive, injurious, flammable, explosive or damaging substances.

Hose or tubing used in bent configurations will be subjected to increased abrasion. Hose clamps or couplings may loosen after initial installation and all sections of hose and tubing including connections, couplings, clamps, conductivity and bonding should be inspected frequently, regularly and consistently, and should be replaced, adjusted or re-tightened for the avoidance of leakage, for the prevention of injuries or damages, and for general safety purposes. Except as indicated in its Limited Warranty, Seller shall not be liable or responsible for direct or indirect injuries or damages caused by or attributed to the failure or malfunction of any Products sold or distributed by it.

Purchasers or users of the Products should frequently and consistently undertake inspections and protective measures with respect to the use and application of Products, which should include the examination of tube and cover, conditions of the hose or tubing, and the identification, repair or replacement of sections showing cracking, blistering, separations, internal and external abrasions, leaking or slipped couplings or connections and make proper proof tests.

Limited Warranty

The Products sold or distributed by Seller are warranted to its customers to be free from defects in material and workmanship at the time of shipment by us, subject to the following provisions. ALL WARRANTY CLAIMS SHALL BE MADE WITHIN SIX (6) MONTHS AFTER SELLER SHIPPED THE PRODUCTS. SELLER'S LIABILITY HEREUNDER IS LIMITED AT SELLER'S EXCLUSIVE DISCRETION, TO 1) THE PURCHASE PRICE OF ANY PRODUCTS PROVING DEFECTIVE; 2) REPAIR OF ANY DEFECTIVE PRODUCT OR PART THEREOF; OR 3) REPLACEMENT OF ANY DEFECTIVE PRODUCT OR PART UPON ITS AUTHORIZED RETURN TO SELLER.

THIS WARRANTY IS IN LIEU OF AND EXCLUDES ALL OTHER WARRANTIES, EXPRESSED, IMPLIED, STATUTORY, OR OTHERWISE CREATED UNDER APPLICABLE LAW INCLUDING, BUT NOT LIMITED TO, THE WARRANTY OF MERCHANTABILITY AND THE WARRANTY OF FITNESS FOR A PARTICULAR PURPOSE. IN NO EVENT SHALL SELLER OR THE MANUFACTURER OF THE PRODUCT BE LIABLE FOR SPECIAL, INCIDENTAL, OR CONSEQUENTIAL DAMAGES, INCLUDING LOSS OF PROFITS, WHETHER OR NOT CAUSED BY OR RESULTING FROM THE NEGLIGENCE OF SELLER AND/OR THE MANUFACTURER OF THE PRODUCT, UNLESS SPECIFICALLY PROVIDED HEREIN. IN ADDITION, THIS WARRANTY SHALL NOT APPLY TO ANY PRODUCTS OR PORTIONS THEREOF WHICH HAVE BEEN SUBJECTED TO ABUSE, MISUSE, IMPROPER INSTALLATION, MAINTENANCE, OR OPERATION, ELECTRICAL FAILURE OR ABNORMAL CONDITIONS, AND TO PRODUCTS WHICH HAVE BEEN TAMPERED WITH, ALTERED, MODIFIED, REPAIRED, REWORKED BY ANYONE NOT APPROVED BY SELLER, OR USED IN ANY MANNER INCONSISTENT WITH THE PROVISIONS OF THE "CAUTIONARY STATEMENT" ABOVE OR ANY INSTRUCTIONS OR SPECIFICATIONS PROVIDED WITH OR FOR THE PRODUCT.

05/03/21 REV

Distributed by:



CORPORATE OFFICE

150 N Martingale Road, Suite 900, Schaumburg, IL 60173-2081

Phone: (847) 755-0360 • Toll-free Fax: (800) 800-0320

International Fax: (847) 885-0996



kuriyama.com



sales@kuriyama.com



The trademarks contained in this publication are trademarks of Kuriyama of America, Inc.

The "Alfagomma" trademark contained in this publication is a registered trademark of Alfagomma S.p.A.

SALES & WAREHOUSE LOCATIONS

CENTRAL DISTRIBUTION CENTER

KURIYAMA OF AMERICA, INC.

14200 Commerce Court

Huntley, IL 60142

☎ (847) 755-0360

☎ (800) 800-0320

🌐 kuriyama.com ✉ sales@kuriyama.com

SOUTHWEST WAREHOUSE

KURIYAMA OF AMERICA, INC.

– HOUSTON

200 Portwall Street, Suite 100

Houston, TX 77029

☎ (713) 674-8212 OR ☎ (800) 501-6808

☎ (713) 674-5214 OR ☎ (800) 800-5214

✉ sales@kuriyama.com

WESTERN WAREHOUSE

KURIYAMA OF AMERICA, INC.

– RENO

12910 Old Virginia Road, Suite 100

Reno, NV 89521

☎ (562) 941-4507

☎ (562) 941-8940 OR ☎ (800) 326-8940

✉ sales@kuriyama.com

SOUTHEAST WAREHOUSE

FORTNEY SALES CO., INC.

4221 Cantrell Road NW

Acworth, GA 30101

☎ (770) 427-6528

☎ (770) 423-9249 OR ☎ (800) 423-9249

🌐 FortneySales.com ✉ sales@fortneysales.com

EASTERN WAREHOUSE

EASTERN RUBBER & PLASTICS CO., INC.

100 Goldman Dr.

Plumsted Industrial Park

Cream Ridge, NJ 08514

☎ (609) 758-0100

☎ (609) 758-0102 OR ☎ (800) 445-7138

🌐 EasternRubber.com ✉ sales@easternrubber.com

IN MEXICO

KURIYAMA DE MÉXICO S DE RL DE CV

Av Jose Palomo Martinez No 520-20 Bodega 5

Parque Industrial Omolap

Apodaca, N.I. CP:66633, México

☎ (81) 1086-1870 0 71

🌐 Kuriyama.com.mx 🌐 Kuriyama.com

✉ servicioalcliente@kuriyama.com

