



KURIYAMA Layflat

Hose & Accessories



KURIYAMA
OF AMERICA, INC.

EDITION 0425

Hose Product Selection Chart

| CATEGORY | | | | | | PVC/Nitrile | | |
|---------------|------------------------|---------------------|-------------------|-----------------------------|----------------------------|--------------|---------------|--------------------------------|
| CATALOG PAGE | 6 | 5 | 7 | 8 | 9 | 12 | 14 | 15 |
| PRODUCT | Vinylflow® | Vinylflow® EZ-Lite™ | Ironsides® | PVC Layflat Assemblies Blue | PVC Layflat Assemblies Red | OROFLEX® 10 | OROFLEX® 20 | OROFLEX® 20 |
| MATERIAL | PVC | PVC | PVC | PVC | PVC | PVC/Nitrile | PVC/Nitrile | PVC/Nitrile |
| COLOR | Blue | Blue | Red | Blue | Red | Black | Yellow | Black |
| APPLICATION | Irrigation Agriculture | Industrial Rental | Mining Industrial | Industrial Rental | Industrial Rental | Industrial | Liquid / Air | Water Transfer Manure Transfer |
| 3/4" | — | 100 psi | — | — | — | — | 480 / 360 psi | — |
| 1" | — | 85 psi | — | — | — | — | 550 / 415 psi | — |
| 1 1/4" | — | 85 psi | — | — | — | — | — | — |
| 1 1/2" | 80 psi | 65 psi | 150 psi | 70 psi | 140 psi | 200 psi | 305 / 225 psi | — |
| 2" | 80 psi | 65 psi | 150 psi | 65 psi | 128 psi | 200 psi | 305 / 225 psi | — |
| 2 1/2" | 80 psi | — | 150 psi | — | — | 200 psi | 300 / 185 psi | — |
| 3" | 70 psi | 60 psi | 150 psi | 60 psi | 125 psi | 175 psi | 260 / 160 psi | — |
| 3 1/2" | — | — | — | — | — | — | — | — |
| 4" | 70 psi | 60 psi | 125 psi | 50 psi | 125 psi | 175 psi | 300 psi | — |
| 4 1/2" | — | — | — | — | — | — | — | — |
| 5" | 40 psi | — | — | — | — | 175 psi | — | — |
| 5 1/2" | — | — | — | — | — | — | — | — |
| 6" | 50 psi | 40 psi | 115 psi | — | — | 175 psi | 290 psi | 290 psi |
| 7" | 45 psi | — | — | — | — | — | — | 230 psi |
| 8" | 35 psi | 40 psi | 70 psi | — | — | 145 psi | — | 200 psi |
| 10" | 30 psi | — | 65 psi | — | — | — | — | 200 psi |
| 12" | 30 psi | — | — | — | — | — | — | 155 psi |
| 16" | 30 psi | — | — | — | — | — | — | — |
| STOCK LENGTHS | 100, 300 | 50,300 | 100, 300 | 50 | 50 | 50, 100, 200 | 50, 100, 200 | 660 |

Because we continually examine ways to improve our products, we reserve the right to alter specifications or discontinue products without prior notice.

| CATEGORY | PVC/Nitrile | Polyurethane (TPU) | | | | Polyester/Rubber | | |
|---------------|------------------|-------------------------|----------------------|---------------|--------------------------|-------------------------|-------------------------|--------------------------|
| Catalog Page | 13 | 18 | 16 | 17 | 21 | 22 | 22 | 23 |
| Product | OROFLEX® Bandama | OROFLEX® Terrain | OROFLEX® Aqua | OROFLEX® Drag | OROFLEX® Oil | Single Jacket Hose | Double Jacket Hose | Double Jacket Assemblies |
| Material | PVC / Nitrile | Polyurethane | Polyurethane | Polyurethane | Polyurethane | Polyester / Rubber | Polyester / Rubber | Polyester / Rubber |
| Color | Black | Black | Blue | Orange | Army Green Or Tan | White | White | White |
| Application | Irrigation | Water Transfer Fracking | Potable Water Bypass | Manure Drag | Hydrocarbs to MIL C-370J | Industrial Construction | Industrial Construction | Industrial Construction |
| 3/4" | — | — | — | — | — | — | — | — |
| 1" | — | — | 240 psi | — | — | — | — | — |
| 1 1/4" | — | — | — | — | — | — | — | — |
| 1 1/2" | — | — | 300 psi | — | — | 150 psi | 200 psi | 200 psi |
| 2" | — | — | 240 psi | — | 150 psi | 150 psi | — | — |
| 2 1/2" | 290 psi | — | 240 psi | — | 150 psi | 150 psi | 200 psi | 200 psi |
| 3" | 260 psi | — | 240 psi | — | 150 psi | 150 psi | — | — |
| 3 1/2" | 230 psi | — | — | — | 150 psi | — | — | — |
| 4" | 200 psi | 320 psi | 240 psi | 245 psi | 150 psi | 150 psi | — | — |
| 4 1/2" | 175 psi | — | — | 200 psi | — | — | — | — |
| 5" | 175 psi | — | — | 200 psi | — | — | — | — |
| 5 1/2" | — | — | — | 175 psi | — | — | — | — |
| 6" | 175 psi | 320 psi | 240 psi | 175 psi | 150 psi | — | — | — |
| 7" | — | — | — | — | — | — | — | — |
| 8" | — | 200 psi | 200 psi | — | — | — | — | — |
| 10" | — | 200 psi | 200 psi | — | — | — | — | — |
| 12" | — | 175/200 psi | 175/200 psi | — | — | — | — | — |
| 16" | — | — | — | — | — | — | — | — |
| STOCK LENGTHS | 660 | 660 | 200, 660 | 660 | 200, 660 | 50, 100 | 100 | 50 |

Because we continually examine ways to improve our products, we reserve the right to alter specifications or discontinue products without prior notice.

LAYFLAT HOSES

| | |
|---|---------|
| Ironsides® Premium Duty PVC Water Discharge Hose..... | 7 |
| Layflat Hose Assemblies | 8-9 |
| Mill Discharge Hoses Single Jacket & Double Jacket “Contractor Grade” | 24 |
| Mill Discharge Assemblies Double Jacket “Contractor Grade” | 25 |
| OROFLEX® 10 PVC / Nitrile Rubber Discharge Hose | 12 |
| OROFLEX® 10 PVC / Nitrile Rubber Discharge Hose Assemblies | 13 |
| OROFLEX® 20 BLACK Heavy Duty PVC / Nitrile Rubber Discharge Hose | 16 |
| OROFLEX® 20 YELLOW Heavy Duty PVC / Nitrile Air & Discharge Hose | 15 |
| OROFLEX® AQUA Polyurethane Potable Water Discharge Hose | 17 |
| OROFLEX® BANDAMA PVC / Nitrile Rubber Irrigation Hose | 14 |
| OROFLEX® DRAG Polyurethane Manure Drag Hose..... | 18 |
| OROFLEX® OIL Polyurethane Oil Transfer Hose..... | 23 |
| OROFLEX® TERRAIN™ Polyurethane Discharge Hose, Assemblies, Couplings..... | 19 – 22 |
| Vinylflow® Premium PVC Drip Irrigation and Water Discharge Hose | 6 |
| Vinylflow® EZ-Lite™ General Purpose PVC Water Discharge Hose | 5 |

COUPLINGS

EZ-Seal™ Leak Resistant Aluminum Couplings

| | |
|--|----|
| Part C Coupler x Hose Shank | 10 |
| Part E Male Adapter x Hose Shank..... | 10 |
| Pin Lug Hose Shank Couplings - Female Ends | 11 |
| Pin Lug Hose Shank Couplings - Male Ends | 11 |

TECHNICAL INFORMATION

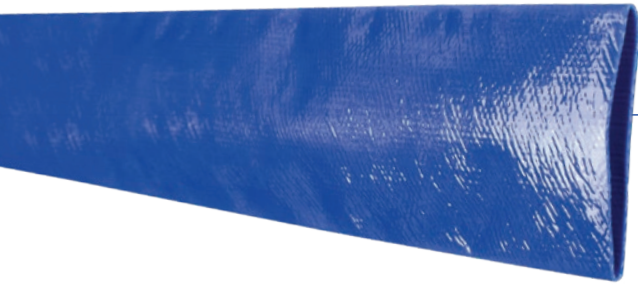
| | |
|---|------------|
| Cautionary Statement & Limited Warranty | Back Cover |
| Chemical Resistance | 31 – 36 |
| Layflat Hose Product Selection Chart | 2 – 3 |
| Technical Information | 26 – 30 |

LAYFLAT HOSES, COUPLINGS AND ACCESSORIES BY SERIES/PART NUMBER

| Series/Part | Page | Series/Part | Page | Series/Part | Page |
|-------------|------|-------------|------|-------------|-------|
| ABF-LF | 11 | GEG-BUNA | 22 | OFDG | 18 |
| ABM-LF | 11 | IS | 9 | OFOIL | 23 |
| AL-CLF | 10 | LF | 8 | OFTR | 19-20 |
| AL-ELF | 10 | LFR | 9 | OFTRC | 21 |
| AL-LDHC | 22 | OF10 | 12 | OFTRCH | 21 |
| BD | 14 | OF10ASL | 13 | SJMD | 24 |
| DJ | 25 | OF20B | 16 | VF | 6 |
| DJMD | 24 | OF20Y | 15 | VFL | 5 |
| GEC-B | 22 | OFAQ | 17 | | |

The trademarks contained in this publication are trademarks of Kuriyama of America, Inc.

Because we continually examine ways to improve our products, we reserve the right to alter specifications or discontinue products without prior notice.



Vinylflow® EZ-Lite™ VFL Series

General Purpose PVC Water Discharge Hose

GENERAL APPLICATIONS

- Agriculture
- Construction
- Equipment rental

CONSTRUCTION

Spiral homogeneous PVC construction is ideal for construction and agriculture applications, and provides for minimal elongation.

SERVICE TEMPERATURE RANGE

-10°F (-12°C) to +140°F (+60°C)

View Up To Date Info



◀ SCAN OR VISIT
**KOA.link/
VFL**

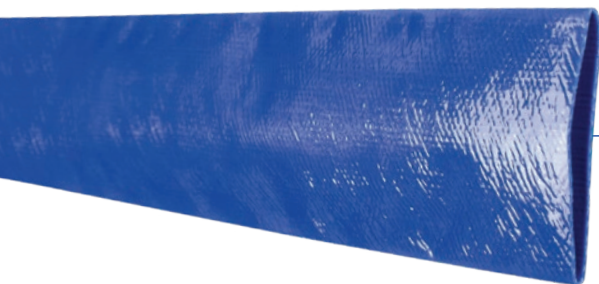
FEATURES AND ADVANTAGES

- **Durable PVC Material** – Provides good abrasion, chemical and UV resistance.
- **“EZ” Design** – An easy to handle, lightweight hose for general purpose applications.
- **Smooth PVC Tube** – Provides low friction loss.
- **PVC Cores** – Hoses coiled around durable PVC cores providing for easy unwinding.
- **Compact Design** – Flat hose design rolls up into tight coils for easy storage and transport, takes up less space than other hoses.

| Series Number | Size | | Hose ID | | Wall Thickness (in) | Working Pressure (psi) at 68°F | Burst Pressure (psi) at 68°F | Coil Length (ft) | Weight (lbs/ft) |
|---------------|-------|-------|---------|-------|---------------------|--------------------------------|------------------------------|------------------|-----------------|
| | (in) | (mm) | (in) | (mm) | | | | | |
| VFL075 | 3/4 | 19.1 | 0.760 | 19.3 | 0.054 | 100 | 300 | 300 | 0.08 |
| VFL100 | 1 | 25.4 | 1.024 | 26.0 | 0.051 | 85 | 255 | 300 | 0.10 |
| VFL125 | 1 1/4 | 31.8 | 1.299 | 33.0 | 0.051 | 85 | 255 | 300 | 0.12 |
| VFL150 | 1 1/2 | 38.1 | 1.614 | 41.0 | 0.045 | 65 | 195 | 300 | 0.14 |
| VFL200 | 2 | 50.8 | 2.087 | 53.0 | 0.048 | 65 | 195 | 300/50 | 0.16 |
| VFL300 | 3 | 76.2 | 3.071 | 78.0 | 0.055 | 60 | 180 | 300/50 | 0.30 |
| VFL400 | 4 | 101.6 | 4.094 | 104.0 | 0.056 | 60 | 180 | 300 | 0.44 |
| VFL600 | 6 | 152.4 | 6.102 | 155.0 | 0.061 | 40 | 120 | 300 | 0.70 |
| VFL800 | 8 | 203.2 | 8.189 | 208.0 | 0.073 | 40 | 120 | 300 | 1.04 |

NOTE: Longer lengths available by special order.

Because we continually examine ways to improve our products, we reserve the right to alter specifications or discontinue products without prior notice.



Vinylflow® VF Series

Premium PVC Drip Irrigation & Water Discharge Hose

GENERAL APPLICATIONS

- Agriculture
- Construction
- Drip irrigation
- Industrial

CONSTRUCTION

Spiral homogeneous PVC construction is ideal for irrigation and agriculture applications, and provides for minimal elongation.

SERVICE TEMPERATURE RANGE

-10°F (-12°C) to +140°F (+60°C)

View Up To Date Info



◀ SCAN OR VISIT
[KOA.link/
VF](https://koya.link/VF)

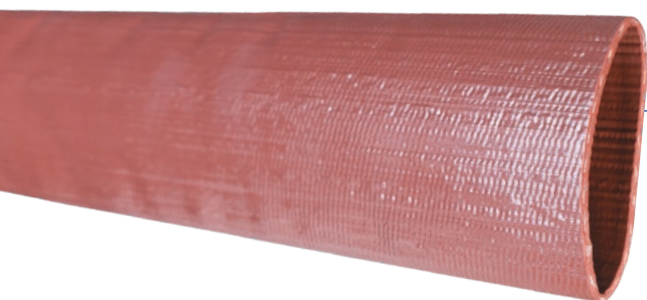
FEATURES AND ADVANTAGES:

- **Durable PVC Material** – Provides good abrasion, chemical and UV resistance.
- **Drip Irrigation** – Hose designed to be punched easily without tearing. Ideal for drip irrigation applications.
- **Smooth PVC Tube** – Provides low friction loss.
- **PVC Cores** – Hoses coiled around durable PVC cores providing for easy unwinding.
- **Compact Design** – Flat hose design rolls up into tight coils for easy storage and transport, takes up less space than other hoses.

| Series Number | Size | | Hose ID | | Wall Thickness (in) | Working Pressure (psi) at 68°F | Burst Pressure (psi) at 68°F | Coil Length (ft) | Weight (lbs/ft) |
|---------------|-------|-------|---------|-------|---------------------|--------------------------------|------------------------------|------------------|-----------------|
| VF150 | 1 1/2 | 38.1 | 1.614 | 41.0 | 0.067 | 80 | 240 | 300 | 0.16 |
| VF200 | 2 | 50.8 | 2.090 | 53.1 | 0.067 | 80 | 240 | 300 | 0.23 |
| VF250 | 2 1/2 | 63.5 | 2.598 | 66.0 | 0.079 | 80 | 240 | 300 | 0.29 |
| VF300 | 3 | 76.2 | 3.130 | 79.5 | 0.079 | 70 | 210 | 300 | 0.39 |
| VF400 | 4 | 101.6 | 4.134 | 105.0 | 0.083 | 70 | 210 | 300 | 0.52 |
| VF500 | 5 | 127.0 | 5.039 | 128.0 | 0.087 | 40 | 120 | 300 | 0.68 |
| VF600 | 6 | 152.4 | 6.181 | 157.0 | 0.087 | 50 | 150 | 300 | 0.86 |
| VF800 | 8 | 203.2 | 8.169 | 207.5 | 0.106 | 45 | 135 | 300/100 | 1.30 |
| VF1000 | 10 | 254.0 | 10.118 | 257.0 | 0.118 | 35 | 105 | 100 | 1.81 |
| VF1200 | 12 | 304.8 | 12.126 | 308.0 | 0.118 | 30 | 90 | 100 | 1.95 |
| VF1400 | 14 | 355.6 | 14.134 | 359.0 | 0.118 | 30 | 90 | 100 | 2.62 |
| VF1600 | 16 | 406.4 | 16.142 | 410.0 | 0.118 | 30 | 90 | 100 | 3.10 |

NOTE: Longer lengths available by special order.

Because we continually examine ways to improve our products, we reserve the right to alter specifications or discontinue products without prior notice.



Ironsides® IS Series

Premium Heavy Duty PVC Water Discharge Hose

GENERAL APPLICATIONS

- Agriculture
- Construction
- Industrial
- Mining
- Quarry

CONSTRUCTION

Spiral homogeneous PVC construction is ideal for agriculture and mining applications, and provides for minimal elongation.

SERVICE TEMPERATURE RANGE

-10°F (-12°C) to +140°F (+60°C)

View Up To Date Info



◀ SCAN OR VISIT
**KOA.link/
IS**



FEATURES AND ADVANTAGES:

- **Durable PVC Material** – Provides good abrasion, chemical and UV resistance.
- **Premium Heavy Duty Construction** – Our most durable PVC layflat hose. Designed for applications requiring higher working pressures.
- **MSHA Accepted** – Hose accepted by United States Dept. of Labor's Mine Safety and Health Administration as having met the Interim Fire Criteria Acceptance of Products Taken Into Underground Mines, acceptance no. IC-218/3.
- **UV Resistant** – Hose resists damage that can result from exposure to UV light, allowing for prolonged outdoor use.
- **Smooth PVC Tube** – Provides low friction loss.
- **PVC Cores** – Hoses coiled around durable PVC cores providing for easy unwinding.
- **Compact Design** – Flat hose design rolls up into tight coils for easy storage and transport, takes up less space than other hoses.

| Series Number | Size | | Hose ID | | Wall Thickness (in) | Working Pressure (psi) at 68°F | Burst Pressure (psi) at 68°F | Coil Length (ft) | Weight (lbs/ft) |
|---------------|-------|-------|---------|-------|---------------------|--------------------------------|------------------------------|------------------|-----------------|
| | (in) | (mm) | (in) | (mm) | | | | | |
| IS150 | 1 1/2 | 38.1 | 1.610 | 40.9 | 0.087 | 150 | 450 | 300 | 0.23 |
| IS200 | 2 | 50.8 | 2.090 | 53.1 | 0.091 | 150 | 450 | 300 | 0.32 |
| IS250 | 2 1/2 | 63.5 | 2.579 | 65.5 | 0.095 | 150 | 450 | 300 | 0.41 |
| IS300 | 3 | 76.2 | 3.090 | 78.5 | 0.098 | 150 | 450 | 300 | 0.52 |
| IS400 | 4 | 101.6 | 4.098 | 104.1 | 0.110 | 125 | 375 | 300 | 0.76 |
| IS600 | 6 | 152.4 | 6.161 | 156.5 | 0.118 | 115 | 345 | 300 | 1.21 |
| IS800 | 8 | 203.2 | 8.150 | 207.0 | 0.122 | 70 | 210 | 300/100 | 1.62 |
| IS1000 | 10 | 254.0 | 10.120 | 257.0 | 0.130 | 65 | 195 | 100 | 1.95 |

NOTE: Longer lengths available by special order.

Because we continually examine ways to improve our products, we reserve the right to alter specifications or discontinue products without prior notice.



LF---APLX50



LF---ACEX50

View Up To Date Info



◀ SCAN OR VISIT

[KOA.link/
LF-Assemblies](https://koya.link/LF-Assemblies)

LF PVC Hose Assemblies

GENERAL APPLICATIONS

- Agriculture
- Construction
- Contractor
- Industrial
- Rental

CONSTRUCTION

Spiral homogeneous PVC construction is ideal for irrigation and agriculture applications, and provides for minimal elongation.

SERVICE TEMPERATURE RANGE

-10°F (-12°C) to +140°F (+60°C)

FEATURES AND ADVANTAGES

- Smooth Tube – Provides low friction loss.
- Packaging – Individual carton.
- Storage – Hose coils flat for easy storage.

| Part Number | Size (in) | Size (mm) | Wall Thickness (in) | Working Pressure (psi) at 68°F | Coil Length (ft) | Weight (ea/lbs) |
|-------------|-----------|-----------|---------------------|--------------------------------|------------------|-----------------|
| LF150APLX50 | 1 1/2 | 38.1 | 0.059 | 70 | 50 | 9.00 |
| LF200APLX50 | 2 | 50.8 | 0.063 | 65 | 50 | 13.50 |
| LF300APLX50 | 3 | 76.2 | 0.067 | 60 | 50 | 21.50 |
| LF400APLX50 | 4 | 101.6 | 0.067 | 50 | 50 | 30.00 |

Hose Ends: Aluminum pin lug couplings male and female

| Part Number | Size (in) | Size (mm) | Wall Thickness (in) | Working Pressure (psi) at 68°F | Coil Length (ft) | Weight (ea/lbs) |
|-------------|-----------|-----------|---------------------|--------------------------------|------------------|-----------------|
| LF150ACEX50 | 1 1/2 | 38.1 | 0.059 | 70 | 50 | 9.50 |
| LF200ACEX50 | 2 | 50.8 | 0.063 | 65 | 50 | 13.60 |
| LF300ACEX50 | 3 | 76.2 | 0.067 | 60 | 50 | 22.00 |
| LF400ACEX50 | 4 | 101.6 | 0.067 | 50 | 50 | 31.50 |

Hose Ends: Aluminum camlocks male x female

Because we continually examine ways to improve our products, we reserve the right to alter specifications or discontinue products without prior notice.



LFR---APLX50



LFR---ACEX50

LFR PVC Hose Assemblies

GENERAL APPLICATIONS

- Agriculture
- Construction
- Contractor
- Industrial
- Rental

CONSTRUCTION

Spiral homogeneous PVC construction is ideal for irrigation and agriculture applications, and provides for minimal elongation.

SERVICE TEMPERATURE RANGE

-10°F (-12°C) to +140°F (+60°C)

FEATURES AND ADVANTAGES

- Smooth Tube – Provides low friction loss.
- Packaging – Individual carton.
- Storage – Hose coils flat for easy storage.

View Up To Date Info



◀ SCAN OR VISIT

[KOA.link/
LFR-Assemblies](https://KOA.link/LFR-Assemblies)

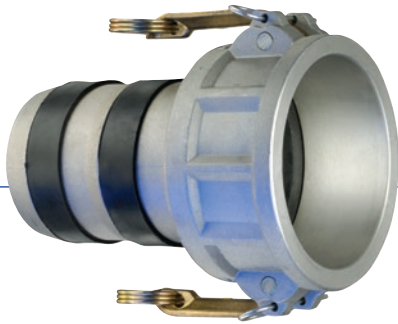
| Part Number | Size (in) | Size (mm) | Wall Thickness (in) | Working Pressure (psi) at 68°F | Coil Length (ft) | Weight (ea/lbs) |
|--------------|-----------|-----------|---------------------|--------------------------------|------------------|-----------------|
| LFR150APLX50 | 1 1/2 | 38.1 | 0.079 | 140 | 50 | 13.50 |
| LFR200APLX50 | 2 | 50.8 | 0.079 | 128 | 50 | 18.00 |
| LFR300APLX50 | 3 | 76.2 | 0.098 | 125 | 50 | 28.00 |
| LFR400APLX50 | 4 | 101.6 | 0.110 | 125 | 50 | 40.50 |

Hose Ends: Aluminum pin lug couplings male and female

| Part Number | Size (in) | Size (mm) | Wall Thickness (in) | Working Pressure (psi) at 68°F | Coil Length (ft) | Weight (ea/lbs) |
|--------------|-----------|-----------|---------------------|--------------------------------|------------------|-----------------|
| LFR150ACEX50 | 1 1/2 | 38.1 | 0.079 | 140 | 50 | 14.00 |
| LFR200ACEX50 | 2 | 50.8 | 0.079 | 128 | 50 | 18.50 |
| LFR300ACEX50 | 3 | 76.2 | 0.098 | 125 | 50 | 28.50 |
| LFR400ACEX50 | 4 | 101.6 | 0.110 | 125 | 50 | 41.00 |

Hose Ends: Aluminum camlocks male x female

Because we continually examine ways to improve our products, we reserve the right to alter specifications or discontinue products without prior notice.



AL-CLF Series (Aluminum Part C)

Female Coupler X Hose Shank

EZ-Seal™ Design

GENERAL APPLICATIONS

- Agriculture
- Chemicals
- Construction
- Material handling
- Petroleum

CONSTRUCTION

Aluminum; ASTM B85 Grade 383

FEATURES AND ADVANTAGES:

- Rubber seals – Help prevent leakage.
- Interchangeability – Part C & E conform to Mil Spec A-A-59326.
- Versatile – Suitable for use with other PVC and Rubber Hoses.

View Up To Date Info



◀ SCAN OR VISIT
[KOA.link/
AL-CLF](https://KOA.link/AL-CLF)

| Part Number | Size (in) | PSI Rating at 70°F | ASTM Specification | Weight Each (lbs) | Standard Carton |
|-------------|-----------|--------------------|--------------------|-------------------|-----------------|
| AL-CLF150 | 1 1/2 | 250 | B85 Grade 383 | 0.77 | 30 |
| AL-CLF200 | 2 | 250 | B85 Grade 383 | 0.98 | 40 |
| AL-CLF300 | 3 | 150 | B85 Grade 383 | 1.98 | 15 |
| AL-CLF400 | 4 | 150 | B85 Grade 383 | 2.87 | 15 |
| AL-CLF600 | 6 | 75 | B85 Grade 383 | 5.65 | 6 |



AL-ELF Series (Aluminum Part E)

Male Coupler X Hose Shank

EZ-Seal™ Design

GENERAL APPLICATIONS

- Agriculture
- Chemicals
- Construction
- Material handling
- Petroleum

CONSTRUCTION

Aluminum; ASTM B85 Grade 383

FEATURES AND ADVANTAGES:

- Rubber seals – Help prevent leakage.
- Interchangeability – Part C & E conform to Mil Spec A-A-59326.
- Versatile – Suitable for use with other PVC and Rubber Hoses.

View Up To Date Info



◀ SCAN OR VISIT
[KOA.link/
AL-ELF](https://KOA.link/AL-ELF)

| Part Number | Size (in) | PSI Rating at 70°F | ASTM Specification | Weight Each (lbs) | Standard Carton |
|-------------|-----------|--------------------|--------------------|-------------------|-----------------|
| AL-ELF150 | 1 1/2 | 250 | B85 Grade 383 | 0.44 | 40 |
| AL-ELF200 | 2 | 250 | B85 Grade 383 | 0.64 | 50 |
| AL-ELF300 | 3 | 150 | B85 Grade 383 | 1.38 | 18 |
| AL-ELF400 | 4 | 150 | B85 Grade 383 | 2.51 | 20 |
| AL-ELF600 | 6 | 75 | B85 Grade 383 | 4.83 | 6 |

Because we continually examine ways to improve our products, we reserve the right to alter specifications or discontinue products without prior notice.


ABF-LF

ABM-LF
[View Up To Date Info](#)


◀ SCAN OR VISIT
**KOA.link/
ABxLF**

ABF-LF Series

Aluminum Shank with Female Brass Swivel Nut

EZ-Seal™ Design

ABM-LF Series

Aluminum Shank with Male Threads

EZ-Seal™ Design

FEATURES AND ADVANTAGES

- Versatile threaded hose connectors designed for suction and discharge applications.
- EZ-Seal™ fittings come with rubber seals on the shanks to help prevent leakage.
- Male ends supplied with NPSM threads (National Pipe Straight Mechanical).
- Cylindrical studs or “pins” positioned on the outside rim of the coupling allowing the use of a spanner wrench to tighten the coupling.

MATERIAL SPECIFICATIONS

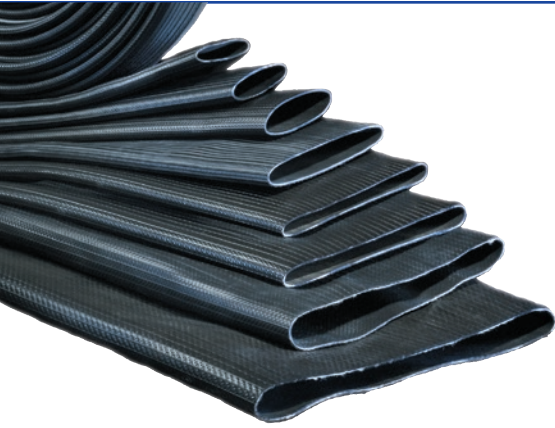
- ASTM B108-92 356 aluminum alloy.
- ASTM B283 Grade 37700 brass alloy.

Note: To insure proper sealing attach band clamps directly over rubber seals during assembly procedure

| Part Number | Size (in) | PSI Rating at 70°F | Weight Each (lbs) | Standard Carton |
|-------------|-----------|--------------------|-------------------|-----------------|
| ABF-LF150 | 1 1/2 | 75 | 0.37 | 150 |
| ABF-LF200 | 2 | 75 | 0.58 | 80 |
| ABF-LF300 | 3 | 50 | 1.16 | 24 |
| ABF-LF400 | 4 | 50 | 2.01 | 20 |

| Part Number | Size (in) | PSI Rating at 70°F | Weight Each (lbs) | Standard Carton |
|-------------|-----------|--------------------|-------------------|-----------------|
| ABM-LF150 | 1 1/2 | 75 | 0.22 | 150 |
| ABM-LF200 | 2 | 75 | 0.40 | 80 |
| ABM-LF300 | 3 | 50 | 1.04 | 24 |
| ABM-LF400 | 4 | 50 | 1.48 | 20 |

Because we continually examine ways to improve our products, we reserve the right to alter specifications or discontinue products without prior notice.



OROFLEX® 10

OF10 Series

PVC/Nitrile Rubber Discharge Hose

GENERAL APPLICATIONS

- Agriculture
- Cable covering
- Dewatering
- Drainage
- Floatation booms
- Industrial washdown
- Irrigation
- Limited oil and chemical applications
- Pump discharge
- Watering

CONSTRUCTION

Black PVC/Nitrile hose using an extruded through-the-weave process with circular woven high tenacity polyester reinforcement

SERVICE TEMPERATURE RANGE

-22°F (-30°C) to +176°F (+80°C)

View Up To Date Info



◀ SCAN OR VISIT
**KOA.link/
OF10**



FEATURES AND ADVANTAGES

- **Proprietary PVC/Nitrile Material** – Specially developed PVC/Nitrile material provides superior abrasion, UV, chemical and oil resistance compared to PVC hoses.
- **Unique Woven Construction** – Specially designed weave pattern provides resistance to snaking, kinking, stretching and twisting.
- **Compact Design** – Flat hose design rolls up into tight coils for easy storage and transport, takes up less space than other hoses.

| Series Number | Size (in) | Size (mm) | Hose ID (in) | Hose ID (mm) | Wall Thickness (in) | Working Pressure (psi) at 68°F | Burst Pressure (psi) at 68°F | Coil Length (ft) | Tensile Strength (lbs) | Weight (lbs/ft) |
|---------------|-----------|-----------|--------------|--------------|---------------------|--------------------------------|------------------------------|------------------|------------------------|-----------------|
| OF10-150 | 1 1/2 | 38.1 | 1.520 | 38.6 | 0.075 | 200 | 600 | 200 | 6,500 | 0.20 |
| OF10-200 | 2 | 50.8 | 2.110 | 53.6 | 0.075 | 200 | 600 | 200 | 8,250 | 0.27 |
| OF10-250 | 2 1/2 | 63.5 | 2.590 | 65.8 | 0.087 | 200 | 600 | 200 | 11,300 | 0.38 |
| OF10-300 | 3 | 76.2 | 3.181 | 80.8 | 0.091 | 175 | 460 | 200/100 | 11,750 | 0.48 |
| OF10-400 | 4 | 101.6 | 4.200 | 106.7 | 0.094 | 175 | 435 | 660/200/100/50 | 17,400 | 0.70 |
| OF10-500 | 5 | 127.0 | 5.020 | 127.5 | 0.106 | 175 | 435 | 200 | 20,650 | 0.94 |
| OF10-600 | 6 | 152.4 | 6.098 | 154.9 | 0.118 | 175 | 435 | 660/200/100/50 | 36,000 | 1.08 |
| OF10-800 | 8 | 203.2 | 8.051 | 204.5 | 0.134 | 145 | 360 | 100/50 | 51,950 | 1.85 |

Because we continually examine ways to improve our products, we reserve the right to alter specifications or discontinue products without prior notice.



OROFLEX® 10 OF10ASL Series

PVC/Nitrile Rubber Discharge Hose Assemblies

View Up To Date Info



◀ SCAN OR VISIT
**KOA.link/
OF10ASL**



**FEATURING
SPHERE LOCK™
COUPLINGS**

GENERAL APPLICATIONS

- Agriculture
- Cable covering
- Dewatering
- Drainage
- Floatation booms
- Industrial washdown
- Irrigation
- Limited oil and chemical applications
- Pump discharge
- Watering

CONSTRUCTION

Black PVC/Nitrile hose using an extruded through-the-weave process with circular woven high tenacity polyester reinforcement.

SERVICE TEMPERATURE RANGE

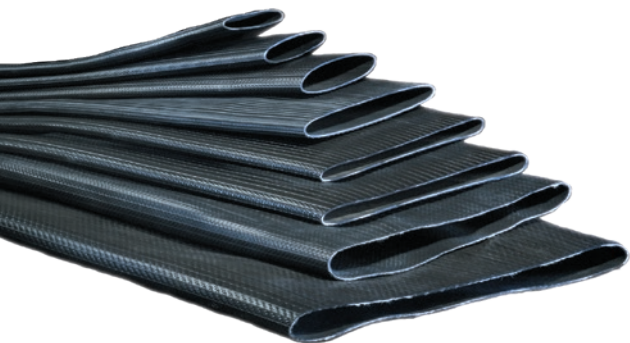
-22°F (-30°C) to +176°F (+80°C)

FEATURES AND ADVANTAGES

- **Factory Tested** – 100% pressure tested with factory certificate.
- **Complete Assembly** – Includes crimped on Sphere Lock™ male and female type B ball and socket couplings.
- **Proprietary PVC/Nitrile Material** – Specially developed PVC/Nitrile material provides superior abrasion, UV, chemical and oil resistance compared to PVC hoses.
- **Unique Woven Construction** – Specially designed weave pattern provides resistance to snaking, kinking, stretching and twisting.

| Part Number | Size | | Wall Thickness | Working Pressure (psi) | Burst Pressure | Coil Length | Tensile Strength | Weight |
|---------------|------|-------|----------------|------------------------|----------------|-------------|------------------|----------|
| | (in) | (mm) | (in) | at 68°F | (psi) at 68°F | (ft) | (lbs) | (lbs/pc) |
| OF10ASL400X50 | 4 | 101.6 | 0.094 | 175 | 435 | 50 | 17,400 | 49.0 |
| OF10ASL600X50 | 6 | 152.4 | 0.118 | 175 | 435 | 50 | 36,000 | 77.0 |
| OF10ASL800X50 | 8 | 203.2 | 0.134 | 145 | 360 | 50 | 51,950 | 129.0 |

Because we continually examine ways to improve our products, we reserve the right to alter specifications or discontinue products without prior notice.



OROFLEX® BANDAMA

BD Series

PVC/Nitrile Rubber Irrigation Hose

GENERAL APPLICATIONS

- Flexible pipeline
- Heavy duty dredge discharge
- High abrasion resistant applications
- Irrigation supply lines
- Slurry, sludge, liquid manure pumping
- Traveling irrigators

CONSTRUCTION

Black PVC/Nitrile hose using an extruded through-the-weave process with circular woven high tenacity polyester reinforcement

SERVICE TEMPERATURE RANGE

-20°F (-29°C) to +176°F (+80°C)

View Up To Date Info



◀ SCAN OR VISIT
**KOA.link/
BD**



FEATURES AND ADVANTAGES

- **Proprietary PVC/Nitrile Material** – Specially developed PVC/Nitrile material provides superior abrasion, UV, chemical and oil resistance compared to PVC hoses.
- **Superior Snaking Resistance!** – Specially designed to virtually eliminate instances of hose snaking, making the hose ideal for use on traveling irrigators.
- **Unique Woven Construction** – Specially designed weave pattern provides resistance to kinking, stretching and twisting.
- **Longer Lengths** – Manufactured in special 660 foot lengths to reduce possible leaking points.
- **Compact Design** – Flat hose design rolls up into tight coils for easy storage and transport, takes up less space than other hoses.

| Series Number | Size | | Hose ID | | Wall Thickness | Working Pressure (psi) | Burst Pressure (psi) | Coil Length | Tensile Strength | Weight |
|---------------|-------|-------|---------|-------|----------------|------------------------|----------------------|-------------|------------------|----------|
| | (in) | (mm) | (in) | (mm) | (in) | at 68°F | at 68°F | (ft) | (lbs) | (lbs/ft) |
| +BD250 | 2 1/2 | 63.5 | 2.598 | 66.0 | 0.120 | 290 | 725 | 660 | 11,728 | 0.57 |
| +BD300 | 3 | 76.2 | 3.051 | 77.5 | 0.120 | 260 | 650 | 660 | 18,475 | 0.67 |
| +BD350 | 3 1/2 | 88.9 | 3.543 | 90.0 | 0.130 | 230 | 580 | 660 | 20,503 | 0.77 |
| BD400 | 4 | 101.6 | 4.067 | 103.3 | 0.130 | 200 | 505 | 660 | 22,046 | 0.94 |
| BD450 | 4 1/2 | 114.3 | 4.626 | 117.5 | 0.130 | 175 | 435 | 660 | 25,353 | 1.08 |
| +BD500 | 5 | 127.0 | 5.020 | 127.5 | 0.140 | 175 | 435 | 660 | 27,161 | 1.21 |
| +BD600 | 6 | 152.4 | 6.043 | 153.5 | 0.140 | 175 | 435 | 660 | 33,069 | 1.41 |

+ **NOTE:** This is a non-stock product. Minimum order requirements may apply. Contact Kuriyama customer service for details.

Because we continually examine ways to improve our products, we reserve the right to alter specifications or discontinue products without prior notice.



OROFLEX® 20 YELLOW OF20Y Series

Heavy Duty PVC/Nitrile Air & Discharge Hose

View Up To Date Info



◀ SCAN OR VISIT

**KOA.link/
OF20Y**



GENERAL APPLICATIONS

- Agriculture
- Air compressors
- Bulk powder discharge (excluding cement)
- Cable covering
- Dewatering
- Drainage
- Flotation booms
- High pressure liquid pumping
- Industrial washdown
- Irrigation
- Limited oil and chemical applications
- Watering

CONSTRUCTION

Yellow PVC/Nitrile hose using an extruded through-the-weave process with circular woven high tenacity polyester reinforcement

SERVICE TEMPERATURE RANGE

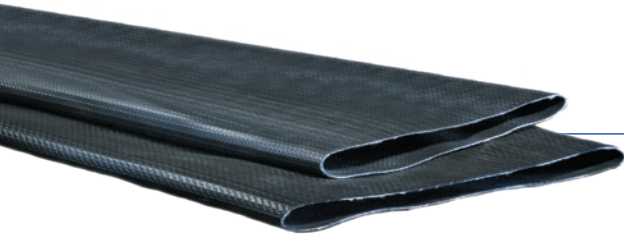
-22°F (-30°C) to +176°F (+80°C)

FEATURES AND ADVANTAGES

- **Proprietary PVC/Nitrile Material** – Specially developed PVC/Nitrile material provides superior abrasion, UV, chemical and oil resistance compared to PVC hoses.
- **Unique Woven Construction** – Specially designed weave pattern provides resistance to snaking, kinking, stretching and twisting.
- **Compact Design** – Flat hose design rolls up into tight coils for easy storage and transport, takes up less space than other hoses.

| Series Number | Size | | Hose ID | | Wall Thickness (in) | Working Pressure (psi) at 68°F | | Burst Pressure (psi) at 68°F | Coil Length (ft) | Tensile Strength (lbs) | Weight (lbs/ft) |
|---------------|-------|-------|---------|-------|---------------------|--------------------------------|-------|------------------------------|------------------|------------------------|-----------------|
| | (in) | (mm) | (in) | (mm) | | (liquid) | (air) | | | | |
| OF20Y-075 | 3/4 | 19.1 | 0.866 | 22.0 | 0.080 | 480 | 360 | 1450 | 200/50 | 3,300 | 0.13 |
| OF20Y-100 | 1 | 25.4 | 1.075 | 27.3 | 0.080 | 550 | 415 | 1660 | 200/50 | 4,150 | 0.17 |
| OF20Y-150 | 1 1/2 | 38.1 | 1.555 | 39.5 | 0.110 | 305 | 225 | 910 | 200 | 6,600 | 0.30 |
| OF20Y-200 | 2 | 50.8 | 2.106 | 53.5 | 0.120 | 305 | 225 | 910 | 200 | 8,250 | 0.43 |
| OF20Y-250 | 2 1/2 | 63.5 | 2.590 | 65.8 | 0.120 | 300 | 185 | 750 | 200 | 13,200 | 0.47 |
| OF20Y-300 | 3 | 76.2 | 3.031 | 77.0 | 0.120 | 260 | 160 | 650 | 200/100 | 18,750 | 0.61 |
| OF20Y-400 | 4 | 101.6 | 4.035 | 102.5 | 0.120 | 300 | – | 750 | 200 | 28,650 | 0.84 |
| OF20Y-600 | 6 | 152.4 | 6.063 | 154.0 | 0.160 | 290 | – | 725 | 100 | 51,600 | 1.68 |

Because we continually examine ways to improve our products, we reserve the right to alter specifications or discontinue products without prior notice.



OROFLEX® 20 BLACK OF20B Series

Heavy Duty PVC/Nitrile Rubber Discharge Hose

GENERAL APPLICATIONS

- Agriculture
- Contaminated liquids, fertilizers, oils, hydrocarbons
- Dewatering
- Frack solution and fresh water transfer
- Irrigation
- Limited chemical applications
- Liquid manure, sludge and slurry transfer
- Mining
- Watering

CONSTRUCTION

Black PVC/Nitrile hose using an extruded through-the-weave process with circular woven high tenacity polyester reinforcement

SERVICE TEMPERATURE RANGE

-20°F (-29°C) to +176°F (+80°C)

View Up To Date Info



◀ SCAN OR VISIT
[KOA.link/
OF20B](https://koya.link/OF20B)



FEATURES AND ADVANTAGES

- **Proprietary PVC/Nitrile Material** – Specially developed PVC/Nitrile material provides superior abrasion, UV, chemical and oil resistance compared to PVC hoses.
- **Unique Woven Construction** – Specially designed weave pattern provides resistance to snaking, kinking, stretching and twisting.
- **Longer Lengths** – Manufactured in special 660 foot lengths to reduce possible leaking points.
- **Compact Design** – Flat hose design rolls up into tight coils for easy storage and transport, takes up less space than other hoses.

| Series Number | Size | | Hose ID | | Wall Thickness (in) | Working Pressure (psi) at 68°F | Burst Pressure (psi) at 68°F | Coil Length (ft) | Tensile Strength (lbs) | Weight (lbs/ft) |
|---------------|------|-------|---------|-------|---------------------|--------------------------------|------------------------------|------------------|------------------------|-----------------|
| OF20B-600 | 6 | 152.4 | 6.063 | 154.0 | 0.160 | 290 | 725 | 660/100 | 51,600 | 1.68 |
| OF20B-700 | 7 | 177.8 | 7.126 | 181.0 | 0.160 | 230 | 580 | 660 | 66,150 | 1.88 |
| OF20B-800 | 8 | 203.2 | 8.091 | 205.5 | 0.150 | 200 | 500 | 660 | 77,150 | 2.22 |
| OF20B-1000 | 10 | 254.0 | 10.059 | 255.5 | 0.150 | 200 | 500 | 660/100/50 | 110,250 | 2.65 |
| OF20B-1200 | 12 | 304.8 | 12.087 | 307.0 | 0.160 | 155 | 375 | 660/100/50 | 101,400 | 3.43 |

Because we continually examine ways to improve our products, we reserve the right to alter specifications or discontinue products without prior notice.



OROFLEX® AQUA

OF AQ Series

Polyurethane Potable Water Discharge Hose

GENERAL APPLICATIONS

- Drinking water transport
- Emergency water supply
- Liquid and powder food transfer
- Potable water to transfer ships/boats
- Sewer and water treatment

CONSTRUCTION

Blue NSF-61 polyurethane (TPU) hose using an extruded through-the-weave process with circular woven high tenacity polyester reinforcement

SERVICE TEMPERATURE RANGE

-58°F (-50°C) to +122°F (+50°C);
Intermittent service to +175°F (+79°C)

View Up To Date Info



◀ SCAN OR VISIT

**KOA.link/
OFAQ**



FEATURES AND ADVANTAGES

- **Premium Polyurethane (TPU) Material** – Exhibits exceptional resistance to abrasion, allowing for use in applications where severe abrasion is a factor and providing longer service life versus rubber or PVC hoses. Also, exhibits exceptional resistance to oils and petroleum based products.
- **NSF-61 Certified** – Hose is certified under NSF/ANSI 61: Drinking Water System Components.
- **Unique Woven Construction** – Specially designed weave pattern provides resistance to snaking, kinking, stretching and twisting.
- **Longer Lengths** – Available in 200 foot lengths and also longer 660 foot lengths to reduce possible leaking points.
- **Smooth TPU Tube** – Provides low friction loss.
- **Compact Design** – Flat hose design rolls up into tight coils for easy storage and transport, takes up less space than other hoses.

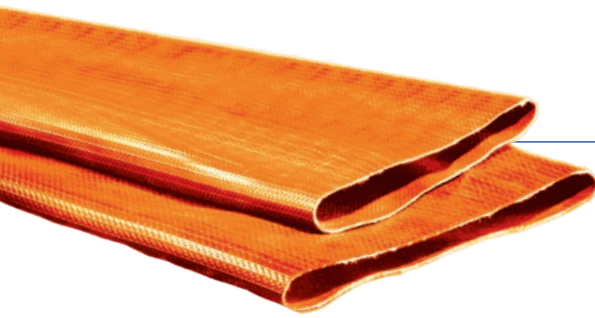
| Series Number | Size (in) | Size (mm) | Hose ID (in) | Hose ID (mm) | Wall Thickness (in) | Working Pressure (psi) at 68°F | Burst Pressure (psi) at 68°F | Coil Length (ft) | Weight (lbs/ft) |
|---------------|-----------|-----------|--------------|--------------|---------------------|--------------------------------|------------------------------|------------------|-----------------|
| OFAQ-100 | 1 | 25.4 | 1.004 | 25.5 | 0.071 | 240 | 725 | 660, 200 | 0.11 |
| OFAQ-150 | 1 1/2 | 38.1 | 1.559 | 39.6 | 0.079 | 300 | 900 | 660, 200 | 0.24 |
| OFAQ-200 | 2 | 50.8 | 2.059 | 52.3 | 0.075 | 240 | 600 | 660, 200 | 0.26 |
| OFAQ-250 | 2 1/2 | 63.5 | 2.618 | 66.5 | 0.090 | 240 | 600 | 660, 200 | 0.35 |
| OFAQ-300 | 3 | 76.2 | 3.059 | 77.7 | 0.093 | 240 | 600 | 660, 200 | 0.43 |
| OFAQ-400 | 4 | 101.6 | 4.059 | 103.1 | 0.106 | 240 | 600 | 660, 200 | 0.67 |
| OFAQ-600 | 6 | 152.4 | 6.020 | 152.9 | 0.138 | 240 | 600 | 660, 200 | 1.18 |
| +OFAQ-800 | 8 | 203.2 | 8.100 | 206.0 | 0.169 | 200 | 600 | 660 | 2.22 |
| +OFAQ-1000 | 10 | 254.0 | 10.100 | 256.0 | 0.177 | 200 | 500 | 660 | 2.80 |
| +OFAQ-1200 | 12 | 304.8 | 12.100 | 307.5 | 0.185 | 175 | 435 | 660 | 3.43 |
| +OFAQH-1200 | 12 | 304.8 | 12.100 | 307.5 | 0.197 | 200 | 500 | 660 | 3.55 |

+ NOTE: This is a non-stock product. Minimum order requirements may apply. Contact Kuriyama customer service for details.

NSF Note: Only products bearing the NSF mark are certified.

Recommended Operating PH Range: 4 to 9 below +86°F (+30°C) and 5 to 9 from +86°F (+30°C) to +122°F (+50°C).

Because we continually examine ways to improve our products, we reserve the right to alter specifications or discontinue products without prior notice.



OROFLEX® DRAG

OFDG Series

Polyurethane Manure Drag Hose

GENERAL APPLICATIONS

- Drag and transport lines for slurry/manure injection and spreading
- Irrigation feeding line
- Traveler irrigators

CONSTRUCTION

Orange polyurethane (TPU) hose using an extruded through-the-weave process with circular woven high tenacity polyester reinforcement

SERVICE TEMPERATURE RANGE

-58°F (-50°C) to +150°F (+65°C);
Intermittent service to +175°F (+79°C)

View Up To Date Info



◀ SCAN OR VISIT
**KOA.link/
OFDG**



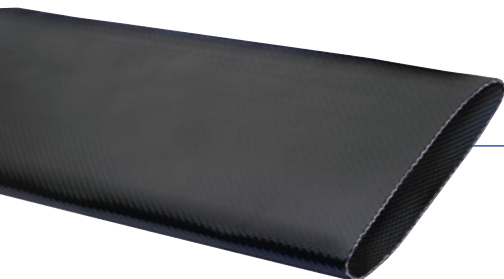
FEATURES AND ADVANTAGES

- **Premium Polyurethane (TPU) Material** – Exhibits exceptional resistance to abrasion, allowing for use in applications where severe abrasion is a factor and providing longer service life versus rubber or PVC hoses. Also, exhibits exceptional resistance to oils and petroleum based products.
- **Unique Woven Construction** – Specially designed weave pattern provides resistance to snaking, kinking, stretching and twisting.
- **Longer Lengths** – Manufactured in special 660 foot lengths to reduce possible leaking points.
- **Smooth TPU Tube** – Provides low friction loss.
- **Compact Design** – Flat hose design rolls up into tight coils for easy storage and transport, takes up less space than other hoses.

| Series Number | Size | | Hose ID | | Wall Thickness | Working Pressure (psi) at 68°F | Burst Pressure (psi) at 68°F | Coil Length (ft) | Tensile Strength (lbs) | Weight (lbs/ft) |
|---------------|-------|-------|---------|-------|----------------|--------------------------------|------------------------------|------------------|------------------------|-----------------|
| | (in) | (mm) | (in) | (mm) | (in) | | | | | |
| +OFDG-400 | 4 | 101.6 | 4.110 | 104.4 | 0.140 | 245 | 605 | 660 | 28,900 | 0.87 |
| +OFDG-450 | 4 1/2 | 114.3 | 4.598 | 116.8 | 0.140 | 200 | 505 | 660 | 35,300 | 0.94 |
| +OFDG-500 | 5 | 127.0 | 5.020 | 127.5 | 0.150 | 200 | 505 | 660 | 39,700 | 1.14 |
| +OFDG-550 | 5 1/2 | 139.7 | 5.571 | 141.5 | 0.150 | 175 | 435 | 660 | 44,100 | 1.28 |
| +OFDG-600 | 6 | 152.4 | 6.003 | 152.5 | 0.150 | 175 | 435 | 660 | 55,100 | 1.38 |

+ **NOTE:** This is a non-stock product. Minimum order requirements may apply. Contact Kuriyama customer service for details.

Because we continually examine ways to improve our products, we reserve the right to alter specifications or discontinue products without prior notice.



OROFLEX® TERRAIN™ OFTR Series

Polyurethane Discharge Hose

GENERAL APPLICATIONS

- Dewatering
- Drinking water transport
- Fluid transfer (see chemical chart)
- Large volume water transfer including fracking
- Manure transfer
- Mining

CONSTRUCTION

Black polyurethane (TPU) hose using an extruded through-the-weave process with circular woven high tenacity polyester reinforcement

SERVICE TEMPERATURE RANGE

-58°F (-50°C) to +150°F (+65°C);
Intermittent service to +175°F (+79°C)

View Up To Date Info



◀ SCAN OR VISIT

**KOA.link/
OFTR**



FEATURES AND ADVANTAGES

- **Premium Polyurethane (TPU) Material** – Exhibits exceptional resistance to abrasion, allowing for use in applications where severe abrasion is a factor and providing longer service life versus rubber or PVC hoses. Also, exhibits exceptional resistance to oils and petroleum based products.
- **Unique Woven Construction** – Specially designed weave pattern provides resistance to snaking, kinking, stretching and twisting.
- **Longer Lengths** – Manufactured in special 660 foot lengths to reduce possible leaking points.
- **Smooth TPU Tube** – Provides low friction loss.
- **Compact Design** – Flat hose design rolls up into tight coils for easy storage and transport, takes up less space than other hoses.

| Series Number | Size | | Hose ID | | Wall Thickness | Working Pressure (psi) | Burst Pressure (psi) | Coil Length | Tensile Strength | Weight |
|---------------|------|-------|---------|-------|----------------|------------------------|----------------------|-------------|------------------|----------|
| | (in) | (mm) | (in) | (mm) | (in) | at 68°F | at 68°F | (ft) | (lbs) | (lbs/ft) |
| +OFTR-400 | 4 | 101.6 | 4.008 | 101.8 | 0.140 | 320 | 800 | 660 | 26,450 | 0.90 |
| +OFTR-600 | 6 | 152.4 | 6.000 | 152.4 | 0.180 | 320 | 800 | 660 | 63,950 | 1.66 |
| OFTR-800 | 8 | 203.2 | 8.100 | 206.0 | 0.165 | 200 | 600 | 660 | 77,200 | 2.22 |
| OFTR-1000 | 10 | 254.0 | 10.100 | 256.0 | 0.169 | 200 | 500 | 660 | 99,200 | 2.80 |
| +OFTR-1200 | 12 | 304.8 | 12.106 | 307.5 | 0.185 | 175 | 435 | 660 | 121,300 | 3.43 |
| +OFTRH-1200 | 12 | 304.8 | 12.106 | 307.5 | 0.185 | 200 | 500 | 660 | 154,300 | 3.55 |

NOTE: NSF/ANSI/Can Standard 61 – Hose can be specially manufactured and certified on request. Contact Kuriyama customer service for details.

+ NOTE: This is a non-stock product. Minimum order requirements may apply. Contact Kuriyama customer service for details.

Because we continually examine ways to improve our products, we reserve the right to alter specifications or discontinue products without prior notice.



OROFLEX® TERRAIN™ 16"

OFTR Series

High Flow Extruded TPU Lay Flat Discharge Hose

GENERAL APPLICATIONS

- Drinking water transport
- Emergency water supply
- Liquid and powder food transfer
- Manure transfer
- Mining
- Potable water to transfer ships/boats
- Sewer and water treatments

CONSTRUCTION

Black polyurethane (TPU) hose using an extruded through-the-weave process with circular woven high tenacity polyester reinforcement.

SERVICE TEMPERATURE RANGE

-58°F (-50°C) to +150°F (+65°C)
Intermittent service to +175°F (+79°C)

View Up To Date Info



◀ SCAN OR VISIT
KOA.link/
OFTRH



FEATURES AND ADVANTAGES

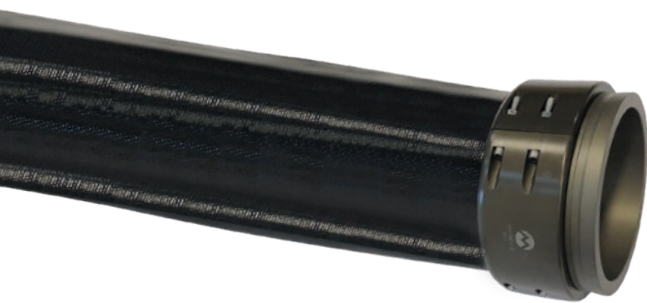
- **Factory Tested** – 100% Hydraulic tested with factory certificate.
- **Premium Polyurethane (TPU) Material** – Exhibits exceptional resistance to abrasion, allowing for use in applications where severe abrasion is a factor and providing longer service life versus rubber or PVC hoses. Also, exhibits exceptional resistance to oils and petroleum based products.
- **Couplings Included** – Durable and lightweight oilfield hose couplings (AL-LDHC Series) on hose ends.
- **Unique Woven Construction** – Specially designed weave pattern provides resistance to kinking, stretching and twisting. Superior snaking resistance!
- **Longer Lengths** – Manufactured in special 660 foot lengths to reduce possible leaking points.
- **Smooth TPU Tube** – Provides low friction loss.
- **Compact Design** – Flat hose design rolls up into tight coils for easy storage and transport, takes up less space than other hoses.
- **Cost-Efficient** – Savings compared to using 2 x 12" lines.
- **Superior UV and Ozone Resistance** – For extreme UV and ozone conditions.

| Series Number | Size (in) | Size (mm) | Hose ID (in) | Hose ID (mm) | Wall Thickness (in) | Working Pressure (psi) at 68°F | Burst Pressure (psi) at 68°F | Coil Length (ft) | Tensile Strength (lbs) | Weight (lbs/ft) |
|---------------|-----------|-----------|--------------|--------------|---------------------|--------------------------------|------------------------------|------------------|------------------------|-----------------|
| +OFTRH-1600 | 16 | 406.4 | 160.083 | 408.5 | 0.185 | 175 | 435 | 660 | 176,400 | 5.11 |

NOTE: NSF/ANSI/Can Standard 61 – Hose can be specially manufactured and certified on request. Contact Kuriyama customer service for details.

+ NOTE: This is a non-stock product. Minimum order requirements may apply. Contact Kuriyama customer service for details.

Because we continually examine ways to improve our products, we reserve the right to alter specifications or discontinue products without prior notice.



OROFLEX® TERRAIN™ ASSEMBLIES

OFTRC Series

Polyurethane Discharge Hose Assemblies

GENERAL APPLICATIONS

- Transfer of freshwater or frackwater

CONSTRUCTION

Black polyurethane (TPU) hose using an extruded through-the-weave process with circular woven high tenacity polyester reinforcement

SERVICE TEMPERATURE RANGE

-58°F (-50°C) to +150°F (+65°C);
Intermittent service to +175°F (+79°C)



View Up To Date Info



◀ SCAN OR VISIT

[KOA.link/OFTRC](https://koya.link/OFTRC)



A Kuriyama Group Company



FEATURES AND ADVANTAGES

- **Premium Polyurethane (TPU) Material** – Exhibits exceptional resistance to abrasion, allowing for use in applications where severe abrasion is a factor and providing longer service life versus rubber or PVC hoses. Also, exhibits exceptional resistance to oils and petroleum based products.
- **Couplings Included** – Durable and lightweight oilfield hose couplings (AL-LDHC Series) on hose ends.
- **Unique Woven Construction** – Specially designed weave pattern provides resistance to kinking, stretching and twisting. Superior snaking resistance!
- **Longer Lengths** – Manufactured in special 660 foot lengths to reduce possible leaking points.
- **Smooth TPU Tube** – Provides low friction loss.
- **Compact Design** – Flat hose design rolls up into tight coils for easy storage and transport, takes up less space than other hoses.

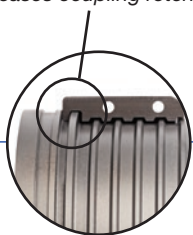
| Part Number | Size (in) | Size (mm) | Wall Thickness (in) | Working Pressure (psi) at 68°F | Burst Pressure (psi) at 68°F | Coil Length (ft) | Tensile Strength (lbs) | Weight (lbs/ft) |
|-----------------|-----------|-----------|---------------------|--------------------------------|------------------------------|------------------|------------------------|-----------------|
| +OFTRC-1000X660 | 10 | 254.0 | 0.169 | 200 | 500 | 660 | 100,310 | 2.82 |
| +OFTRC-1200X660 | 12 | 304.8 | 0.185 | 175 | 435 | 660 | 121,254 | 3.52 |
| OFTRCH-1200X660 | 12 | 304.8 | 0.185 | 200 | 500 | 660 | 154,300 | 3.63 |

+ **NOTE:** This is a non-stock product. Minimum order requirements may apply. Contact Kuriyama customer service for details.

Because we continually examine ways to improve our products, we reserve the right to alter specifications or discontinue products without prior notice.



Don't risk a leak!
Unique Locking Lip™ design
increases coupling retention.



AL-LDHC Series

Oilfield Hose Coupling

- Lightweight aluminum with abrasion resistant anodized hard coating
- Multiple collar segments evenly distribute pressure on the hose for even sealing
- Locking Lip™ provides better coupling retention than other designs

View Up To Date Info



◀ SCAN OR VISIT
[KOA.link/
AL-LDHC](https://KOA.link/AL-LDHC)

| Part Number | Size (in) | Working Pressure (psi) at 68°F | Burst Pressure (psi) at 68°F | Weight Each (lbs) | Standard Carton |
|-------------|-----------|--------------------------------|------------------------------|-------------------|-----------------|
| AL-LDHC1000 | 10 | 200 | 600 | 41.20 | 1 |
| AL-LDHC1200 | 12 | 200 | 600 | 57.30 | 1 |



GEC-B Series

Grooved Couplings

- For use with AL-LDHC coupling or grooved end pipe
- Durable ductile iron
- UL listed
- Buna (nitrile) gasket included

View Up To Date Info



◀ SCAN OR VISIT
[KOA.link/
GEC](https://KOA.link/GEC)

| Part Number | Size (in) | Weight Each (lbs) | Standard Carton |
|-------------|-----------|-------------------|-----------------|
| GEC-B1000 | 10 | 26.15 | 1 |
| GEC-B1200 | 12 | 30.65 | 1 |



GEG-BUNA Series

Grooved Gasket

- Fits GEC-B Series couplings
- Buna (nitrile) material, resistant to oil, gas, and moderately aggressive chemicals

View Up To Date Info



◀ SCAN OR VISIT
[KOA.link/
GEG](https://KOA.link/GEG)

| Part Number | Size (in) | Weight Each (lbs) | Standard Carton |
|--------------|-----------|-------------------|-----------------|
| GEG-BUNA1000 | 10 | 0.771 | 1 |
| GEG-BUNA1200 | 12 | 0.889 | 1 |

Because we continually examine ways to improve our products, we reserve the right to alter specifications or discontinue products without prior notice.



OROFLEX® OIL OFOIL Series

Polyurethane Oil Transfer Hose

GENERAL APPLICATIONS

- Brackish and seawater
- Fluid transfer (see chemical chart)
- Fuels and oils transport

CONSTRUCTION

Polyurethane (TPU) hose using an extruded through-the-weave process with circular woven high tenacity polyester reinforcement. Four electrical wires protected with a braided sheet of polyester to help prevent static build up.

SERVICE TEMPERATURE RANGE

-58°F (-50°C) to +150°F (+65°C);
Intermittent service to +175°F (+79°C)

AVAILABLE COLORS:

Standard color is Tan – also available in NATO Green and Black via special order. Contact Kuriyama customer service for details.

View Up To Date Info



◀ SCAN OR VISIT
**KOA.link/
OFOIL**



FEATURES AND ADVANTAGES

- **Premium Polyurethane (TPU) Material** – Exhibits exceptional resistance to abrasion, allowing for use in applications where severe abrasion is a factor and providing longer service life versus rubber or PVC hoses. Also, exhibits exceptional resistance to oils and petroleum based products.
- **Grounding Wires** – Hose contains four wires to help prevent the buildup of static electricity for added safety.
- **Unique Woven Construction** – Specially designed weave pattern provides resistance to snaking, kinking, stretching and twisting.
- **Longer Lengths** – Manufactured in special 660 foot lengths to reduce possible leaking points.
- **Smooth TPU Tube** – Provides low friction loss.
- **Compact Design** – Flat hose design rolls up into tight coils for easy storage and transport, takes up less space than other hoses.
- **MIL-Spec** – In compliance with MIL-PRF-370.

| Series Number | Size | | Hose ID | | Wall Thickness (in) | Working Pressure (psi) at 68°F | Burst Pressure (psi) at 68°F | Coil Length (ft) | Weight (lbs/ft) |
|---------------|-------|-------|---------|-------|---------------------|--------------------------------|------------------------------|------------------|-----------------|
| | (in) | (mm) | (in) | (mm) | | | | | |
| OFOIL-200 | 2 | 50.8 | 2.059 | 52.3 | 0.087 | 150 | 600 | 660/200 | 0.26 |
| +OFOIL-250 | 2 1/2 | 63.5 | 2.650 | 67.3 | 0.087 | 150 | 600 | 660/200 | 0.35 |
| OFOIL-300 | 3 | 76.2 | 3.059 | 77.7 | 0.093 | 150 | 600 | 660/200 | 0.43 |
| +OFOIL-350 | 3 1/2 | 88.9 | 3.551 | 90.2 | 0.095 | 150 | 600 | 660/200 | 0.57 |
| OFOIL-400 | 4 | 101.6 | 4.059 | 103.1 | 0.106 | 150 | 600 | 660/200 | 0.67 |
| OFOIL-600 | 6 | 152.4 | 6.059 | 153.9 | 0.138 | 150 | 600 | 660/200 | 1.18 |

+ **NOTE:** This is a non-stock product. Minimum order requirements may apply. Contact Kuriyama customer service for details.

Because we continually examine ways to improve our products, we reserve the right to alter specifications or discontinue products without prior notice.



SJMD Series *Single Jacket*

DJMD Series *Double Jacket*

“Contractor Grade” Hoses

GENERAL APPLICATIONS

- Construction pumps
- Plant clean-up
- Pump water discharge
- Wash down – ships/factories

CONSTRUCTION

Single or double jacket with 100% polyester yarn. Water and mildew-resistant cover, will not rot, even if the hose is stored wet.

SERVICE TEMPERATURE RANGE

-25°F (-31°C) to +185°F (+85°C)

View Up To Date Info



◀ SCAN OR VISIT

[KOA.link/
SJMD-DJMD](https://koya.link/SJMD-DJMD)

FEATURES AND ADVANTAGES

- **Versatile Natural Rubber Tube** – Exhibits a good combination of strength and extreme flexibility for ease-of-use.
- **Wide Service Temperature Range** – Hose may be used in a wide range of service temperature ranges from -25°F to +185°F.
- **Double and Single Jacket Options** – Available with a double jacket for additional external abrasion resistance.
- **Identification Stripe** – Red stripe indicates single jacket version, blue stripe indicates double jacket version.
- **Compact Design** – Flat hose design rolls up into tight coils for easy storage and transport, takes up less space than other hoses.
- **Storage/Shipping Carton** – Hoses are individually packaged in cartons for ease of handling and shipping.

| Series Number | Size | | Hose ID | | Working Pressure (psi) at 68°F | Burst Pressure (psi) at 68°F | Coil Length (ft) | Coupling Bowl Size (in) | Weight (lbs/ft) |
|---------------|-------|-------|---------|-------|--------------------------------|------------------------------|------------------|-------------------------|-----------------|
| | (in) | (mm) | (in) | (mm) | | | | | |
| SJMD150 | 1 1/2 | 38.1 | 1.614 | 41.0 | 150 | 450 | 100/50 | 1 11/16 | 0.21 |
| SJMD200 | 2 | 50.8 | 2.126 | 54.0 | 150 | 450 | 100/50 | 2 1/4 | 0.31 |
| SJMD250 | 2 1/2 | 63.5 | 2.638 | 67.0 | 150 | 450 | 100/50 | 2 3/4 | 0.37 |
| SJMD300 | 3 | 76.2 | 3.150 | 80.0 | 150 | 450 | 100/50 | 3 1/4 | 0.45 |
| SJMD400 | 4 | 101.6 | 4.055 | 103.0 | 150 | 450 | 100/50 | 4 9/32 | 0.56 |
| DJMD150 | 1 1/2 | 38.1 | 1.575 | 40.0 | 200 | 600 | 100 | 1 13/16 | 0.25 |
| DJMD250 | 2 1/2 | 63.5 | 2.598 | 66.0 | 200 | 600 | 100 | 2 13/16 | 0.44 |

Because we continually examine ways to improve our products, we reserve the right to alter specifications or discontinue products without prior notice.



DJ Series

Double Jacket “Contractor Grade” Coupled with Male and Female Aluminum Rocker Lug Couplings

GENERAL APPLICATIONS

Heavy duty equipment or pump rental
Hydrant-to-truck water supply line
Municipal washdown
Ship deck washdown

CONSTRUCTION

Double jacket with 100% polyester yarn. Water and mildew-resistant cover, will not rot, even if the hose is stored wet.

SERVICE TEMPERATURE RANGE

-25°F (-31°C) to +185°F (+85°C)

View Up To Date Info



◀ SCAN OR VISIT
**KOA.link/
DJ**

FEATURES AND ADVANTAGES

- **Versatile Natural Rubber Tube** – Exhibits a good combination of strength and extreme flexibility for ease-of-use.
- **Wide Service Temperature Range** – Hose may be used in a wide range of service temperature ranges from -25°F to +185°F.
- **Double Jacket** – Double jacket provides additional external abrasion resistance.
- **Compact Design** – Flat hose design rolls up into tight coils for easy storage and transport, takes up less space than other hoses.
- **Storage/Shipping Carton** – Hoses are individually packaged in cartons for ease of handling and shipping.

| Part Number | Size (in) (mm) | | Length (ft) | Thread Type | Working Pressure (psi) at 68°F | Weight Each (lbs) |
|--------------|-------------------|------|----------------|-------------|-----------------------------------|----------------------|
| DJ150NSTX50 | 1 1/2 | 38.1 | 50 | NST | 200 | 14 |
| DJ150NPSHX50 | 1 1/2 | 38.1 | 50 | NPSH | 200 | 14 |
| DJ250NSTX50 | 2 1/2 | 63.5 | 50 | NST | 200 | 23 |
| DJ250NPSHX50 | 2 1/2 | 63.5 | 50 | NPSH | 200 | 23 |

Because we continually examine ways to improve our products, we reserve the right to alter specifications or discontinue products without prior notice.

FRICTION LOSS OF PVC LAYFLAT HOSE (PSI/100 FT.)

| GPM | 1.5" | 2" | 2.5" | 3" | 4" | 6" | 8" | 10" | 12" | 14" | 16" |
|--------|------|-----|------|-----|-----|-----|-----|-----|-----|-----|-----|
| 20 | 1.2 | — | — | — | — | — | — | — | — | — | — |
| 30 | 2.4 | — | — | — | — | — | — | — | — | — | — |
| 40 | 5.1 | 1.1 | — | — | — | — | — | — | — | — | — |
| 50 | 6.0 | — | — | — | — | — | — | — | — | — | — |
| 60 | — | 2.4 | 1.4 | — | — | — | — | — | — | — | — |
| 80 | — | 4.1 | 1.9 | 1.0 | — | — | — | — | — | — | — |
| 90 | 17.0 | — | — | — | — | — | — | — | — | — | — |
| 100 | — | 6.0 | 2.8 | 1.2 | — | — | — | — | — | — | — |
| 120 | — | — | — | 1.8 | — | — | — | — | — | — | — |
| 140 | — | — | — | 2.2 | — | — | — | — | — | — | — |
| 160 | — | — | — | 2.6 | 0.6 | — | — | — | — | — | — |
| 180 | — | — | — | 3.3 | 0.7 | — | — | — | — | — | — |
| 200 | — | 22 | 7 | — | 0.8 | — | — | — | — | — | — |
| 220 | — | — | — | — | 1.0 | — | — | — | — | — | — |
| 240 | — | — | — | — | 1.1 | — | 0.2 | — | — | — | — |
| 250 | — | — | — | 5 | — | — | — | — | — | — | — |
| 260 | — | — | — | — | 1.3 | 0.2 | — | — | — | — | — |
| 280 | — | — | — | — | 1.4 | 0.2 | — | — | — | — | — |
| 300 | — | — | — | — | 1.6 | 0.2 | — | — | — | — | — |
| 340 | — | — | — | — | — | 0.3 | — | — | — | — | — |
| 350 | — | — | 22 | — | — | — | — | — | — | — | — |
| 380 | — | — | — | — | — | 0.4 | — | — | — | — | — |
| 420 | — | — | — | — | — | 0.5 | — | — | — | — | — |
| 460 | — | — | — | — | — | 0.6 | — | — | — | — | — |
| 500 | — | — | — | — | 4 | 0.7 | — | — | — | — | — |
| 540 | — | — | — | — | — | 0.8 | — | — | — | — | — |
| 580 | — | — | — | — | 22 | 0.9 | — | — | — | — | — |
| 620 | — | — | — | — | — | 1.0 | — | — | — | — | — |
| 660 | — | — | — | — | — | 1.1 | — | — | — | — | — |
| 1,200 | — | — | — | — | — | 3.0 | — | — | — | — | — |
| 1,250 | — | — | — | — | 22 | — | — | — | — | — | — |
| 1,800 | — | — | — | — | — | — | 1.5 | — | — | — | — |
| 2,500 | — | — | — | — | — | — | — | 1.0 | — | — | — |
| 3,500 | — | — | — | — | — | — | — | — | 0.8 | — | — |
| 3,630 | — | — | — | — | — | 22 | — | — | — | — | — |
| 5,000 | — | — | — | — | — | — | 11 | — | — | 0.6 | — |
| 6,000 | — | — | — | — | — | — | — | — | — | — | 0.4 |
| 8,000 | — | — | — | — | — | — | — | 8 | — | — | — |
| 12,000 | — | — | — | — | — | — | — | — | 8 | — | — |
| 15,000 | — | — | — | — | — | — | — | — | — | 5 | — |
| 16,000 | — | — | — | — | — | — | — | — | — | — | 30 |

Because we continually examine ways to improve our products, we reserve the right to alter specifications or discontinue products without prior notice.

FRICITION LOSS OF OROFLEX® LAYFLAT HOSES IN (PSI/100 FT.)

| GPM | 1 | 1 1/4 | 1 1/2 | 1 3/4 | 2 | 2 1/2 | 2 3/4 | 3 | 3 1/2 | 4 | 4 1/2 | 5 | 6 | 8 | 10 | 12 |
|------|--------|--------|--------|--------|-------|--------|--------|--------|-------|-------|-------|-------|--------|-------|------|------|
| 1 | 0.04 | 0.01 | 0.01 | — | — | — | — | — | — | — | — | — | — | — | — | — |
| 2 | 0.15 | 0.05 | 0.02 | 0.01 | — | — | — | — | — | — | — | — | — | — | — | — |
| 5 | 0.82 | 0.28 | 0.11 | 0.05 | 0.03 | 0.01 | 0.01 | — | — | — | — | — | — | — | — | — |
| 7 | 1.53 | 0.52 | 0.21 | 0.10 | 0.05 | 0.02 | 0.01 | 0.01 | — | — | — | — | — | — | — | — |
| 10 | 2.96 | 1.00 | 0.41 | 0.19 | 0.10 | 0.03 | 0.02 | 0.01 | 0.01 | — | — | — | — | — | — | — |
| 15 | 6.27 | 2.11 | 0.87 | 0.41 | 0.21 | 0.07 | 0.05 | 0.03 | 0.01 | 0.01 | — | — | — | — | — | — |
| 20 | 10.67 | 3.60 | 1.48 | 0.70 | 0.36 | 0.12 | 0.08 | 0.05 | 0.02 | 0.01 | 0.01 | — | — | — | — | — |
| 25 | 16.13 | 5.44 | 2.24 | 1.06 | 0.55 | 0.19 | 0.12 | 0.08 | 0.04 | 0.02 | 0.01 | 0.01 | — | — | — | — |
| 30 | 22.59 | 7.62 | 3.14 | 1.48 | 0.77 | 0.26 | 0.16 | 0.11 | 0.05 | 0.03 | 0.01 | 0.01 | — | — | — | — |
| 35 | 30.05 | 10.14 | 4.17 | 1.97 | 1.03 | 0.35 | 0.22 | 0.14 | 0.07 | 0.04 | 0.02 | 0.01 | 0.00 | — | — | — |
| 40 | 38.47 | 12.98 | 5.34 | 2.52 | 1.32 | 0.44 | 0.28 | 0.18 | 0.09 | 0.04 | 0.03 | 0.02 | 0.01 | — | — | — |
| 45 | 47.84 | 16.14 | 6.64 | 3.13 | 1.64 | 0.55 | 0.35 | 0.23 | 0.11 | 0.06 | 0.03 | 0.02 | 0.01 | — | — | — |
| 50 | 58.13 | 19.61 | 8.07 | 3.81 | 1.99 | 0.67 | 0.42 | 0.28 | 0.13 | 0.07 | 0.04 | 0.02 | 0.01 | — | — | — |
| 60 | 81.45 | 27.48 | 11.31 | 5.34 | 2.79 | 0.94 | 0.59 | 0.39 | 0.18 | 0.10 | 0.05 | 0.03 | 0.01 | — | — | — |
| 70 | 108.33 | 36.54 | 15.04 | 7.10 | 3.70 | 1.25 | 0.79 | 0.51 | 0.24 | 0.13 | 0.07 | 0.04 | 0.02 | 0.00 | — | — |
| 80 | — | 46.78 | 19.25 | 9.09 | 4.74 | 1.60 | 1.01 | 0.66 | 0.31 | 0.16 | 0.09 | 0.05 | 0.02 | 0.01 | — | — |
| 90 | — | 58.17 | 23.94 | 11.30 | 5.90 | 1.99 | 1.25 | 0.82 | 0.39 | 0.20 | 0.11 | 0.07 | 0.03 | 0.01 | — | — |
| 100 | — | 70.69 | 29.09 | 13.73 | 7.17 | 2.42 | 1.52 | 0.99 | 0.47 | 0.25 | 0.14 | 0.08 | 0.03 | 0.01 | — | — |
| 125 | — | 106.82 | 43.96 | 20.75 | 10.83 | 3.65 | 2.30 | 1.50 | 0.71 | 0.37 | 0.21 | 0.12 | 0.05 | 0.01 | — | — |
| 150 | — | — | 61.59 | 29.07 | 15.17 | 5.12 | 3.22 | 2.11 | 0.99 | 0.52 | 0.29 | 0.18 | 0.07 | 0.02 | 0.01 | — |
| 175 | — | — | 81.92 | 38.67 | 20.18 | 6.81 | 4.28 | 2.80 | 1.32 | 0.69 | 0.39 | 0.23 | 0.10 | 0.02 | 0.01 | — |
| 200 | — | — | 104.87 | 49.50 | 25.84 | 8.71 | 5.48 | 3.59 | 1.69 | 0.88 | 0.50 | 0.30 | 0.12 | 0.03 | 0.01 | — |
| 225 | — | — | — | 61.56 | 32.13 | 10.84 | 6.81 | 4.46 | 2.10 | 1.10 | 0.62 | 0.37 | 0.15 | 0.04 | 0.01 | — |
| 250 | — | — | — | 74.60 | 39.04 | 13.17 | 8.28 | 5.42 | 2.56 | 1.33 | 0.75 | 0.45 | 0.19 | 0.05 | 0.02 | — |
| 275 | — | — | — | 89.23 | 46.57 | 15.71 | 9.88 | 6.46 | 3.05 | 1.59 | 0.90 | 0.54 | 0.22 | 0.05 | 0.02 | — |
| 300 | — | — | — | 104.81 | 54.70 | 18.45 | 11.60 | 7.59 | 3.58 | 1.87 | 1.05 | 0.63 | 0.26 | 0.06 | 0.02 | — |
| 350 | — | — | — | — | 72.75 | 24.54 | 15.43 | 10.10 | 4.77 | 2.49 | 1.40 | 0.84 | 0.35 | 0.09 | 0.03 | — |
| 400 | — | — | — | — | 93.14 | 31.42 | 19.75 | 12.93 | 6.10 | 3.18 | 1.79 | 1.07 | 0.44 | 0.11 | 0.04 | — |
| 450 | — | — | — | — | — | 39.07 | 24.56 | 16.08 | 7.59 | 3.96 | 2.23 | 1.34 | 0.55 | 0.14 | 0.05 | — |
| 500 | — | — | — | — | — | 47.47 | 29.84 | 19.54 | 9.22 | 4.81 | 2.71 | 1.62 | 0.67 | 0.16 | 0.06 | 0.02 |
| 600 | — | — | — | — | — | 66.52 | 41.82 | 27.37 | 12.92 | 6.74 | 3.80 | 2.27 | 0.94 | 0.23 | 0.08 | 0.03 |
| 700 | — | — | — | — | — | 88.47 | 55.62 | 36.41 | 17.18 | 8.97 | 5.05 | 3.03 | 1.24 | 0.31 | 0.10 | 0.04 |
| 800 | — | — | — | — | — | 113.26 | 71.20 | 46.61 | 22.00 | 11.48 | 6.47 | 3.87 | 1.59 | 0.39 | 0.13 | 0.05 |
| 1000 | — | — | — | — | — | — | 107.59 | 70.43 | 33.24 | 17.35 | 9.78 | 5.85 | 2.41 | 0.59 | 0.20 | 0.08 |
| 1200 | — | — | — | — | — | — | — | 98.68 | 46.58 | 24.31 | 13.70 | 8.20 | 3.37 | 0.83 | 0.28 | 0.12 |
| 1400 | — | — | — | — | — | — | — | 131.24 | 61.95 | 32.33 | 18.22 | 10.91 | 4.49 | 1.11 | 0.37 | 0.15 |
| 1600 | — | — | — | — | — | — | — | — | 79.31 | 41.39 | 23.32 | 13.96 | 5.75 | 1.42 | 0.48 | 0.20 |
| 1800 | — | — | — | — | — | — | — | — | 98.62 | 51.47 | 29.00 | 17.36 | 7.14 | 1.76 | 0.59 | 0.24 |
| 2000 | — | — | — | — | — | — | — | — | — | 62.55 | 35.24 | 21.10 | 8.68 | 2.14 | 0.72 | 0.30 |
| 2500 | — | — | — | — | — | — | — | — | — | 94.51 | 53.26 | 31.88 | 13.12 | 3.23 | 1.09 | 0.45 |
| 3000 | — | — | — | — | — | — | — | — | — | — | 74.62 | 44.67 | 18.38 | 4.53 | 1.53 | 0.63 |
| 3500 | — | — | — | — | — | — | — | — | — | — | 99.24 | 59.41 | 24.45 | 6.02 | 2.03 | 0.84 |
| 4000 | — | — | — | — | — | — | — | — | — | — | — | 76.06 | 31.30 | 7.71 | 2.60 | 1.07 |
| 4500 | — | — | — | — | — | — | — | — | — | — | — | 94.58 | 38.92 | 9.59 | 3.23 | 1.33 |
| 5000 | — | — | — | — | — | — | — | — | — | — | — | — | 47.30 | 11.65 | 3.93 | 1.62 |
| 5500 | — | — | — | — | — | — | — | — | — | — | — | — | 56.42 | 13.90 | 4.69 | 1.93 |
| 6000 | — | — | — | — | — | — | — | — | — | — | — | — | 66.27 | 16.33 | 5.51 | 2.27 |
| 6500 | — | — | — | — | — | — | — | — | — | — | — | — | 76.84 | 18.93 | 6.39 | 2.63 |
| 7000 | — | — | — | — | — | — | — | — | — | — | — | — | 88.14 | 21.71 | 7.32 | 3.01 |
| 7500 | — | — | — | — | — | — | — | — | — | — | — | — | 100.14 | 24.67 | 8.32 | 3.42 |
| 8000 | — | — | — | — | — | — | — | — | — | — | — | — | — | 27.80 | 9.38 | 3.86 |

Note: This calculations are theoretical and based on straight lines . Liquid is water at 20°C.

Recommended maximum velocity for constant work: 11.5 ft/s (3.5m/s).

Maximum recommended velocity for non constant work: 16.4 ft/s (5 m/s).

Values in red match with flows given 16.4 ft/s (5 m/s).

Because we continually examine ways to improve our products, we reserve the right to alter specifications or discontinue products without prior notice.

VINYLFLOW® LONGITUDINAL ELONGATION PERCENTAGE (ON FLAT GROUND ONLY)

| Series Number | Pressure (psi) | | | | | | | |
|---------------|----------------|------|------|------|------|------|------|------|
| | 10 | 20 | 30 | 40 | 50 | 60 | 70 | 80 |
| VF150 | 0.00 | 0.01 | 0.02 | 0.06 | 0.14 | 0.17 | 0.35 | 0.50 |
| VF200 | 0.01 | 0.03 | 0.04 | 0.15 | 0.32 | 0.38 | 0.61 | 0.84 |
| VF250 | 0.06 | 0.15 | 0.23 | 0.50 | 0.79 | 0.95 | 1.33 | 1.57 |
| VF300 | 0.03 | 0.14 | 0.21 | 0.34 | 0.63 | 0.76 | 1.10 | - |
| VF400 | 0.14 | 0.35 | 0.53 | 0.90 | 1.40 | 1.68 | 1.98 | - |
| VF600 | 0.14 | 0.42 | 0.63 | 1.08 | 1.35 | - | - | - |
| VF800 | 0.21 | 0.57 | 0.86 | 1.47 | - | - | - | - |
| VF1000 | 0.15 | 0.39 | 0.59 | - | - | - | - | - |
| VF1200 | 0.14 | 0.55 | 0.82 | - | - | - | - | - |
| VF1600 | 0.00 | 0.28 | 0.42 | - | - | - | - | - |

IRONSIDES® LONGITUDINAL ELONGATION PERCENTAGE (ON FLAT GROUND ONLY)

| Series Number | Pressure (psi) | | | | | | | | | | | | | | |
|---------------|----------------|------|------|------|------|------|------|------|------|------|------|------|------|------|------|
| | 10 | 20 | 30 | 40 | 50 | 60 | 70 | 80 | 90 | 100 | 110 | 120 | 130 | 140 | 150 |
| IS150 | 0.00 | 0.10 | 0.10 | 0.20 | 0.30 | 0.36 | 0.40 | 0.50 | 0.60 | 0.60 | 0.80 | 0.90 | 0.90 | 1.00 | 1.10 |
| IS200 | 0.00 | 0.00 | 0.00 | 0.10 | 0.10 | 0.10 | 0.20 | 0.40 | 0.60 | 0.60 | 0.70 | 0.80 | 0.80 | 0.90 | 1.10 |
| IS250 | 0.00 | 0.00 | 0.10 | 0.20 | 0.30 | 0.40 | 0.40 | 0.60 | 0.60 | 0.80 | 1.00 | 1.10 | 1.10 | 1.30 | 1.30 |
| IS300 | 0.00 | 0.10 | 0.10 | 0.20 | 0.30 | 0.40 | 0.50 | 0.50 | 0.60 | 0.70 | 0.80 | 1.00 | 1.10 | - | - |
| IS400 | 0.00 | 0.10 | 0.20 | 0.30 | 0.40 | 0.50 | 0.70 | 0.80 | 0.90 | 1.20 | 1.30 | 1.40 | 1.40 | - | - |
| IS600 | 0.00 | 0.10 | 0.30 | 0.50 | 0.50 | 0.60 | 0.80 | 0.90 | 1.00 | 1.20 | - | - | - | - | - |
| IS800 | 0.10 | 0.20 | 0.50 | 0.80 | 1.00 | 1.20 | 1.50 | 0.00 | - | - | - | - | - | - | - |

VINYLFLOW® EZ-LITE™ LONGITUDINAL ELONGATION PERCENTAGE (ON FLAT GROUND ONLY)

| Series Number | Pressure (psi) | | | | | |
|---------------|----------------|------|------|------|------|------|
| | 10 | 20 | 30 | 40 | 50 | 60 |
| VFL150 | 0.00 | 0.10 | 0.20 | 0.30 | 0.40 | 0.60 |
| VFL200 | 0.00 | 0.20 | 0.30 | 0.60 | 0.80 | - |
| VFL300 | 0.20 | 0.40 | 0.80 | 1.20 | - | - |
| VFL400 | 0.20 | 0.50 | 1.40 | 1.90 | - | - |
| VFL600 | 0.00 | 0.40 | 0.80 | 1.40 | - | - |
| VFL800 | 0.20 | 0.80 | 1.60 | 2.20 | - | - |
| VF800 | 0.21 | 0.57 | 0.86 | 1.47 | - | - |
| VF1000 | 0.15 | 0.39 | 0.59 | - | - | - |
| VF1200 | 0.14 | 0.55 | 0.82 | - | - | - |
| VF1600 | 0.00 | 0.28 | 0.42 | - | - | - |

LAYFLAT HOSE ID SIZE GUIDE

| Hose ID | 3/4 | 1 | 1-1/2 | 2 | 3 | 4 | 5 | 6 | 8 | 10 | 12 | 14 | 16 |
|----------------------|-----|-------|-------|-------|---|-------|---|-------|----|----|----|----|----|
| Hose Width When Flat | 5/8 | 1-5/8 | 2-1/2 | 3-1/2 | 5 | 6-1/2 | 8 | 9-1/2 | 13 | 16 | 19 | 22 | 25 |

Because we continually examine ways to improve our products, we reserve the right to alter specifications or discontinue products without prior notice.

**VINYLFLOW[®], VINYLFLOW[®]
EZ-LITE MAXIMUM
LENGTH AVAILABILITY**

| Series Number | Max. Available Length |
|---------------|-----------------------|
| VF/VFL150 | 1000 |
| VF/VFL200 | 1000 |
| VF250 | 800 |
| VF/VFL300 | 800 |
| VF/VFL400 | 750 |
| VF/VFL600 | 700 |
| VF/VFL800 | 650 |
| VF1000 | 500 |
| VF1200 | 500 |
| VF1400 | 500 |
| VF1600 | 500 |

**IRONSIDES[®] MAXIMUM
LENGTH AVAILABILITY**

| Series Number | Max. Available Length |
|---------------|-----------------------|
| IS150 | 700 |
| IS200 | 650 |
| IS250 | 600 |
| IS300 | 550 |
| IS400 | 500 |
| IS600 | 450 |
| IS800 | 450 |
| IS1000 | 450 |

**FOR SLOPED GROUND, ADD
HEAD PRESSURE SHOWN
BELOW**

| Hose | Slope Angle | Additional Head Pressure |
|---|-------------|--------------------------|
| Vinylflow [®] | 5° | 11 |
| | 10° | 23 |
| Vinylflow [®] EZ-Lite [™] | 15° | 34 |
| | 20° | 44 |
| Ironsides [®] | 30° | 65 |
| | 35° | 75 |

Because we continually examine ways to improve our products, we reserve the right to alter specifications or discontinue products without prior notice.

LAYFLAT HOSE MATERIAL PROPERTIES

| Product Name | Series | Tube Material | General Applications | Overall Durability | Drag Application Suitability | Water | Liquid Manure |
|---------------------------|---------------|-------------------|---------------------------------------|--------------------|------------------------------|-----------|-----------------|
| Vinylflow® EZ-Lite™ | VFL | PVC | Water transfer | Standard | Limited | Excellent | Limited |
| Vinylflow® | VFL | PVC | Water transfer & drip irrigation | Standard | Limited | Excellent | Limited |
| Ironsides™ | IS | PVC | Water transfer and mining applicaions | Good | Limited | Excellent | Limited |
| PVC Layflat Assemblies | LF & LFR | PVC | Water transfer | Standard | Not Recommended | Excellent | Not Recommended |
| OROFLEX® 10 | OF10 | PVC/NBR | Water | Very Good | Limited | Excellent | Excellent |
| OROFLEX® 20 | OF20B & OF20Y | PVC/NBR | Water & liquid manure transfer | Excellent | Good | Excellent | Excellent |
| OROFLEX® Drag | OFDG | TPU | Manure spreaders | Excellent | Excellent | Excellent | Excellent |
| OROFLEX® Bandama | BD | PVC/NBR | Traveling irrigators | Excellent | Very Good | Excellent | Excellent |
| OROFLEX® Aqua | OFAQ | Polyurethane | Water Bypass | Excellent | Very Good | Excellent | Excellent |
| OROFLEX® Terrain | OFTR | Polyurethane | Frac Water Transfer | Excellent | Very Good | Excellent | Excellent |
| OROFLEX® Oil | OFOIL | Polyurethane | Military Oil Transfer | Excellent | Very Good | Excellent | Excellent |
| Mill Discharge Hose | SJMD & DJMD | Rubber/ Polyester | Water transfer | Standard | Not Recommended | Excellent | Not Recommended |
| Mill Discharge Assemblies | DJ | Rubber/ Polyester | Water transfer | Standard | Not Recommended | Excellent | Not Recommended |

Because we continually examine ways to improve our products, we reserve the right to alter specifications or discontinue products without prior notice.

KEY TO CHEMICAL RESISTANT CHART
A Fluid has little or no effect

C Fluid has severe effect

X No data-likely to have severe effect

B Fluid has minor to moderate effect

T No data-likely to have minor effect

- No data

| NAME | CONDITIONS | | | TPU POLYETHER POLYURETHANE | NBR | PVC | BRASS | ALUMINUM |
|------------------------------|------------|-----|-------|----------------------------------|-----|-----|-------|----------|
| | % | °C | HOURS | | | | | |
| Acetaldehyde | 40 | 21 | 1000 | C | X | X | A | A |
| Acetamide | 50 | 21 | 1000 | | B | - | - | - |
| Acethylene | | 21 | 1000 | | | | | |
| Acetic acid | 20 | 21 | 1000 | C | X | A | X | B |
| Acetic acid | 5 | 21 | 1000 | C | X | A | | |
| Acetic acid | 5 | 100 | 10 | | | | | |
| Acetic acid | 98 | | | | | C | | |
| Acetic acid, glacial | | 38 | 1000 | | | | - | - |
| Acetic anhydride | | | 1000 | | | | - | - |
| Acetone | | 21 | 10000 | | X | X | A | A |
| Acetone | | | 1000 | C | X | | | |
| Acetone | | 21 | 1000 | | X | C | | |
| Alcohol | | | 1000 | | | | | |
| Allyl alcohol | | | 1000 | | - | X | - | - |
| Aluminium chloride | 5 | 60 | 168 | B | - | - | | |
| Aluminium chloride solutions | | | | | A | - | X | X |
| Aluminium salts | | | | B | A | A | - | B |
| Aluminium sulfate solutions | | | | B | A | - | X | X |
| Alums | | | | | | | | |
| Ammonia | | | | B | X | A | - | - |
| Ammonia | 28 | 21 | 1000 | | | A | X | - |
| Ammonium chloride solutions | 10 | | | | B | A | X | - |
| Ammonium hydroxide | 2 | 21 | 10000 | A | B | X | X | - |
| Ammonium hydroxide solutions | | | | | - | - | X | - |
| Ammonium salts | | | | B | | | | |
| Ammonium sulfate solutions | | | | B | | | | |
| Amyl acetate | | | | C | X | X | A | X |
| Amyl alcohol | | | | C | B | B | A | A |
| Aniline | | 21 | 10000 | C | X | - | X | B |
| Aniseed oil | | | | | | | | |
| Asphalt | | | | | B | X | A | - |
| ASTM oil No.1 | | 149 | | B | A | B | A | A |
| ASTM Oil No.3 | | 149 | | B | A | X | A | A |
| ASTM reference Fuel A | | 70 | | B | A | B | A | A |
| ASTM reference Fuel B | | 70 | | B | A | X | A | A |
| ASTM reference Fuel C | | 70 | | C | B | X | A | - |
| ASTM reference Fuel C | | | | | | | | |
| Barium hydroxide solutions | | | | B | A | X | - | - |
| Beer | | | | | - | - | - | - |
| Benzaldehyde | | | | C | X | X | - | A |
| Benzene | | 21 | 1000 | C | B | X | A | A |
| Benzoic acid | 3 | 100 | 10 | | | | - | - |
| Benzoic acid | 3 | 100 | 10 | C | X | X | | |
| Benzole | | | | | | | | |
| Benzyl alcohol | | | | | X | A | - | - |

Because we continually examine ways to improve our products, we reserve the right to alter specifications or discontinue products without prior notice.

KEY TO CHEMICAL RESISTANT CHART

| | | |
|---|--|---|
| A Fluid has little or no effect | C Fluid has severe effect | X No data-likely to have severe effect |
| B Fluid has minor to moderate effect | T No data-likely to have minor effect | - No data |

| NAME | CONDITIONS | | | TPU POLYETHER POLYURETHANE | NBR | PVC | BRASS | ALUMINUM |
|-----------------------------|------------|----|-------|----------------------------------|-----|-----|-------|----------|
| | % | °C | HOURS | | | | | |
| Bitumen | | | | | | | | |
| Bleaching lye | | 21 | 288 | | | | | |
| Borax solutions | | | | | A | A | B | - |
| Boric acid solutions | 10 | | | B | A | A | X | A |
| Brandy | | | | | | | | |
| Bromine, anhydrous liquid | | | | B | X | X | A | A |
| Butane | | 21 | 1000 | | X | X | | |
| Butanol | | 21 | 10000 | | A | A | A | A |
| Butter | | | | | - | - | - | - |
| Butter milk | | | | | | | | |
| Butyl acetate | | 21 | 10000 | | | | A | A |
| Butyl acetate | | | | C | X | A | | |
| Butyl alcohol | | | | B | A | A | A | A |
| Butylene glycol | | | | | | | - | - |
| Butyraldehyde | | | | | X | - | A | - |
| Butyric acid | | | | | - | A | B | A |
| Calcium chloride | | 21 | 10000 | B | A | A | B | - |
| Calcium chloride solutions | 10 | | | | A | A | - | - |
| Calcium hydroxide solutions | | | | B | B | - | X | X |
| Calcium hypochlorite | 5 | | | | - | B | - | - |
| Calcium hypochlorite | | 60 | 1000 | | - | B | | |
| Camphor | | | | | | | | |
| Carbon bisulfide | | | | | | | | |
| Carbon Dioxide | | | | A | A | A | A | A |
| Carbon disulphide | | 21 | 1000 | B | B | X | B | B |
| Carbon monoxide | | | | | B | A | A | A |
| Carbon tetrachloride | | 21 | 1000 | C | X | X | B | X |
| Carbon tetrachloride | | | | | | | | |
| Castor oil | | | | B | A | A | A | A |
| Catechol | 6 | | | | | | | |
| Caustic soda | 40 | | | | X | X | - | - |
| Chloric Acid 35% | | | | | | A | | |
| Chlorine gas, dry | | | | B | | | - | - |
| Chlorine gas, wet | | | | | X | X | | |
| Chlorine water | | | | | - | X | - | - |
| Chloroacetic acid | | | | C | B | - | - | - |
| Chlorobenzene | | | | | X | X | A | A |
| Chloroform | | 21 | 1000 | C | X | X | A | A |
| Chloromic acid | 40 | 80 | 1000 | C | | | | |
| Chlorosulfonic acid | | | | | X | X | - | - |
| CELLOSOLVE Acetate | | | | | X | A | - | - |
| Citric acid | 10 | 80 | 1000 | B | X | A | X | A |
| Copper chloride solutions | | | | | B | A | X | - |
| Copper salts | 10 | | | | | | | |
| Copper Sulfate solutions | | | | | A | A | X | X |
| Cotton seed oil | | 21 | 1000 | B | B | - | A | A |
| Creosote oil | | | | | B | X | X | A |
| Cresol | | 21 | 10000 | C | X | - | - | A |
| Cupric sulphate | | 21 | 10000 | B | A | A | X | X |
| Cyclohexane | | | | Dissolve | B | X | A | - |

Because we continually examine ways to improve our products, we reserve the right to alter specifications or discontinue products without prior notice.

KEY TO CHEMICAL RESISTANT CHART
A Fluid has little or no effect

C Fluid has severe effect

X No data-likely to have severe effect

B Fluid has minor to moderate effect

T No data-likely to have minor effect

- No data

| NAME | CONDITIONS | | | TPU POLYETHER POLYURETHANE | NBR | PVC | BRASS | ALUMINUM |
|---------------------------|------------|-----|-------|----------------------------------|-----|-----|-------|----------|
| | % | °C | HOURS | | | | | |
| Cyclohexanol | | | | | B | X | - | - |
| Cyclohexanone | | | | | X | X | - | B |
| Decalin | | | | | B | - | A | - |
| Dibutyl Phthalate | | 30 | 1000 | C | X | A | A | A |
| Diesel oil | | | | | | C | | |
| Diesel fuel | | | | | A | C | A | A |
| Diethyl ether | | 21 | 10000 | | X | B | A | A |
| Diethyl sebacate | | | | | X | X | A | - |
| Dimethyl formamide | | | | Dissolve | | | - | - |
| Dimethyl Phthalate | | | | | X | - | | |
| Diocetyl Phthalate | | | | | | | A | A |
| Dioxane | | 21 | 1000 | | X | X | A | A |
| Epichlorohydrin | | | | | - | - | - | - |
| Ethanol | | 21 | 10000 | | A | B | B | A |
| Ether | | | | B | B | B | A | A |
| Ethyl acetate | | 21 | 1000 | C | X | X | A | A |
| Ethyl acetate | | | | | | | | |
| Ethyl Alcohol | | | | B | A | B | B | A |
| Ethyl chloride | | | | C | X | X | B | A |
| Ethylene dichloride | | 21 | 1000 | | X | X | - | - |
| Ethylene glycol | | 21 | 10000 | B | A | A | A | A |
| Ethylene oxide | | | | | | | | |
| Ferric chloride | 3 | 100 | 10 | B | B | A | X | X |
| Ferric chloride | | 21 | 10000 | B | | | | |
| Ferric chloride solutions | | | | | B | A | X | X |
| Fluosilicic acid | | | | | X | X | - | A |
| Formaldehyde | 30 | 21 | 10000 | B | - | - | A | B |
| Formic acid | 40 | | | C | - | X | | |
| Formic Acid | | | | | | | B | - |
| Formic Acid | 5 | 21 | 1000 | | | | | |
| Formic Acid | 5 | 100 | 10 | | | | | |
| Freon 11 | | | | | | | | |
| Freon 113 | | 55 | | | X | X | | |
| Freon 114 | | | | | | | | |
| Freon 12 | | | | | X | X | - | - |
| Freon II | | 21 | 1000 | | | | | |
| Fuel oil | | | | B | A | X | A | A |
| Gasoline | | | | B | B | C | A | A |
| Glue | | | | | B | A | X | A |
| Glycerin | | | | B | A | A | A | A |
| Glycerol | | 60 | 1000 | | A | A | A | A |
| Glycol | | | | B | A | - | | |
| Heptane | | 21 | 1000 | | A | B | A | A |
| Hexane | | 60 | 1000 | B | A | X | A | - |
| Hydrazine | | | | C | X | X | - | - |
| Hydrochloric acid | 10 | 21 | 10 | C | | | | |
| Hydrochloric acid | 20 | | | | B | X | | |
| Hydrochloric acid | 10 | 21 | 20000 | | | | | |
| Hydrochloric acid | 1 | | | C | | | | |
| Hydrochloric acid | 37 | | | | - | X | X | X |

Because we continually examine ways to improve our products, we reserve the right to alter specifications or discontinue products without prior notice.

KEY TO CHEMICAL RESISTANT CHART

| | | |
|---|--|---|
| A Fluid has little or no effect | C Fluid has severe effect | X No data-likely to have severe effect |
| B Fluid has minor to moderate effect | T No data-likely to have minor effect | - No data |

| NAME | CONDITIONS | | | TPU POLYETHER POLYURETHANE | NBR | PVC | BRASS | ALUMINUM |
|-------------------------------|------------|-----|-------|----------------------------------|-----|-----|-------|----------|
| | % | °C | HOURS | | | | | |
| Hydrocyanic acid | | | | - | - | - | - | - |
| Hydrofluoric acid | 48 | | | X | X | X | X | X |
| Hydrofluoric acid | 75 | | | C | | | | |
| Hydrogen | | | | A | X | X | - | - |
| Hydrogen peroxide | 30 | | | B | B | A | X | A |
| Hydrogen peroxide | 3 | 70 | 10 | | | | | |
| Hydrogen peroxide | 3 | 21 | 10 | | | | | |
| Hydrogen sulfide | | | | C | X | X | - | A |
| Iron salts | 20 | | | | A | A | - | - |
| Isooctane | | | | B | A | X | A | - |
| Isopropanol | | 60 | 1000 | B | A | B | B | A |
| Isopropyl alcohol | | | | | A | B | B | A |
| JP-4 Jet Fuel | | | | C | A | X | A | B |
| Kerosene | | | | B | B | C | A | A |
| Kerosene | | 21 | 1000 | | | | | |
| Lacquer solvents | | | | | | | | |
| Lactic acid | 50 | | | B | A | - | B | X |
| Lactic acid | 90 | 21 | 10000 | | - | - | B | X |
| Linseed oil | | | | B | B | A | B | A |
| Lithium grease | | 100 | | | | | | |
| Lubricating oil | | | | B | B | - | B | A |
| Magnesium chloride solutions | | | | | - | - | | |
| Magnesium hydroxide solutions | | | | | - | - | - | X |
| Maleic acid | 25 | 21 | 10000 | C | X | X | - | - |
| Mercuric chloride solutions | | | | | B | B | X | X |
| Mercury | | | | A | B | A | X | X |
| Methanol | | 21 | 1000 | | A | B | B | A |
| Methyl alcohol | | | | | A | B | B | A |
| Methyl ethyl ketone | | 21 | 10000 | C | X | X | A | A |
| Methyl ethyl ketone | | | | | | | | |
| Methyl isobutyl ketone | | | | | X | X | - | - |
| Methylene chloride | | 21 | 1000 | C | X | X | A | X |
| Mineral oils | | 80 | 1000 | B | A | A | A | A |
| Naphtha | | | | B | B | X | A | B |
| Naphthalene | | | | | - | - | A | A |
| Nickel salts | | | | C | A | B | - | - |
| Nitric acid | 70 | | | C | X | X | X | - |
| Nitric acid | 30 | | | | X | X | X | - |
| Nitric acid | 60 | | | | X | X | X | - |
| Nitric acid | 10 | 21 | 20000 | C | X | X | X | - |
| Nitric acid, red fuming | | | | | X | X | - | - |
| Nitrobenzene | | | | C | X | X | A | A |
| Nitromethane | | | | | X | X | A | - |
| Octane | | | | | - | - | - | - |
| Oleic acid | | | | B | B | B | B | A |
| Oleic acid | 100 | 80 | 1000 | | | | | |
| Oleum | 20/25 | | | | X | X | - | - |
| Olive oils | | 80 | 1000 | | B | B | B | A |
| Oxalic acid | 5 | 100 | 10 | A | - | X | X | B |

Because we continually examine ways to improve our products, we reserve the right to alter specifications or discontinue products without prior notice.

KEY TO CHEMICAL RESISTANT CHART

| | | |
|---|--|---|
| A Fluid has little or no effect | C Fluid has severe effect | X No data-likely to have severe effect |
| B Fluid has minor to moderate effect | T No data-likely to have minor effect | - No data |

| NAME | CONDITIONS | | | TPU POLYETHER POLYURETHANE | NBR | PVC | BRASS | ALUMINUM |
|--------------------------------|------------|-----|-------|----------------------------------|-----|-----|-------|----------|
| | % | °C | HOURS | | | | | |
| Palmitic acid | | | | | B | - | X | A |
| Paraffin oil | | | | | A | - | A | - |
| Perchloroethane | | | | | | | | |
| Perchloroethylene | | 120 | 10 | C | X | X | X | - |
| Perchloroethylene | | 100 | 10 | | | | | |
| Perchloroethylene | | | | | | | | |
| Petrol | | 21 | 1000 | | | | | |
| Petroleum | | | | B | | | | |
| Phenol | | 21 | 10000 | C | X | X | X | B |
| Phenol | | 93 | 10 | | | | | |
| Phenol | | | | | | | | |
| Phenyl etyl alcohol | | | | | | | | |
| Phosphoric acid | 85 | 21 | 10000 | B | X | A | X | X |
| Phosphoric acid | 10 | 21 | 10 | | | A | | |
| Pickling solution | 20 | | | | - | - | | |
| Plasticizers | | | | | | | | |
| Potassium bromide | 10 | | | | - | A | - | - |
| Potassium chloride | | 21 | 10000 | B | - | A | - | - |
| Potassium dichromate solutions | | | | | - | A | - | - |
| Potassium hydroxide | 10 | 21 | 100 | | | | - | - |
| Potassium hydroxide | 0,1 | 21 | 500 | | B | A | | - |
| Potassium iodide | 10 | | | | A | A | - | - |
| Potassium nitrate | 10 | | | B | - | A | - | - |
| Potassium permanganate | 1 | | | | - | X | | |
| Potassium permanganate | 50 | 21 | 1000 | | | | - | - |
| Potassium sulphate | | | | | - | A | - | - |
| Propane | | | | B | X | X | | |
| Propanol | | | | | - | B | - | - |
| Pydraul 312 | | | | | X | X | - | - |
| Pyridine | | 21 | 10000 | | - | X | A | A |
| Pyridine | | 21 | 1000 | | | | | |
| Pyridine | | | | | | | | |
| Resorcinol | 10 | 21 | 1000 | | | | | |
| SAE 10 oil | | | | B | | | | |
| Salicylic acid | | | | | X | A | - | B |
| Salt | | | | | | | | |
| Sea Water | | | | B | B | A | B | - |
| Silicone fluids | | 80 | 1000 | | | | | |
| Silicone Grease | | | | | B | B | A | - |
| Silver salts | | | | B | | | | |
| SKYDROL 500B | | | | | | | | |
| Soap | 1 | 120 | 10 | B | A | B | - | - |
| Sodium bicarbonate | 10 | 80 | 1000 | B | A | A | B | - |
| Sodium bisulphite | 1 | 100 | 10 | B | A | A | - | - |
| Sodium bromide | | | | | | | | |
| Sodium carbonate | 1 | 120 | 10 | B | A | A | B | X |
| Sodium chloride | 0,7 | 100 | 10 | B | | | X | X |
| Sodium chloride | 20 | 80 | 1000 | B | A | A | | |
| Sodium dichromate | 20 | | | B | A | A | - | - |

Because we continually examine ways to improve our products, we reserve the right to alter specifications or discontinue products without prior notice.

KEY TO CHEMICAL RESISTANT CHART

| | | |
|---|--|---|
| A Fluid has little or no effect | C Fluid has severe effect | X No data-likely to have severe effect |
| B Fluid has minor to moderate effect | T No data-likely to have minor effect | - No data |

| NAME | CONDITIONS | | | TPU POLYETHER POLYURETHANE | NBR | PVC | BRASS | ALUMINUM |
|------------------------------|------------|-----|-------|----------------------------------|-----|-----|-------|----------|
| | % | °C | HOURS | | | | | |
| Sodium hydroxide | 1 | 100 | 100 | | | A | - | - |
| Sodium hydroxide | 0,1 | 21 | 10000 | B | | A | | |
| Sodium hydroxide | 20 | | | | | A | | |
| Sodium hypochlorite | 0,4 | 70 | 10 | | | | | |
| Sodium hypochlorite | 5 | | | | X | A | X | X |
| Sodium nitrate | 10 | | | B | X | | B | B |
| Sodium perborate | 1 | 100 | 10 | | X | A | X | A |
| Sodium phosphatate | 10 | | | | - | A | X | X |
| Sodium sulphate | | 21 | 10000 | B | A | A | - | - |
| Sodium sulphate | 10 | 21 | 20000 | | | | | |
| Sodium sulphide | | | | B | A | A | - | - |
| Sodium sulphite | | | | | B | A | | |
| Sodium thiosulphide | | | | | | | | |
| Soybean oil | | | | | B | B | - | - |
| Stannouschloride | 15 | | | | A | A | - | - |
| Steam | | 100 | | C | X | X | - | - |
| Stearic acid | | | | | B | A | X | X |
| Styrene | | | | B | X | - | B | X |
| Sulfur dioxide gas | | | | A | X | - | - | - |
| Sulfur dioxide liquid | | | | | X | X | - | - |
| Sulfuric acid fuming oleum | 20 | | | C | X | X | - | - |
| Sulfuric acid,above | 50 | | | | | | | |
| Sulfuric acid up to | 50 | | | | | | | |
| Sulfuric acid above | 50 | | | | | X | | |
| Sulfurous acid | | | | | X | - | | |
| Sulfur, molten | | | | | | | | |
| Sulphuric acid | 10 | 21 | 10 | | X | A | | |
| Sulphuric acid | 30 | 80 | 1000 | | X | - | | |
| Tannic acid | 10 | | | | X | A | X | B |
| Tartaric acid | | | | B | X | B | | |
| Tetrahydrofuran | | 21 | 500 | | X | X | - | - |
| Tetrahydrofuran | | | | | | | | |
| Tetraline | | | | | X | - | - | - |
| Toluene | | 21 | 1000 | C | X | X | A | A |
| Toluene | | | | | | | | |
| Tributyl phosphate | | | | | X | - | - | X |
| Trichlorethane | | | | | X | X | - | - |
| Trichloroethylene | | 21 | 10000 | | | | A | X |
| Trichloroethylene | | | | C | X | - | | |
| Triethanolamine | | | | | B | B | A | - |
| Trisodium phosphate solution | | | | B | B | - | - | - |
| Tung oil | | | | | B | B | A | A |
| Turpentine | | 21 | 10000 | B | B | A | B | - |
| Urea | 20 | | | B | B | - | - | - |
| Vaseline | | 80 | 1000 | | | | | |
| Vegetable oils | | 80 | 1000 | B | - | B | - | A |
| Water | | 100 | | B | | | | |
| Water | | 70 | | B | | | | |

Because we continually examine ways to improve our products, we reserve the right to alter specifications or discontinue products without prior notice.

KEY TO CHEMICAL RESISTANT CHART

| | | |
|---|--|---|
| A Fluid has little or no effect | C Fluid has severe effect | X No data-likely to have severe effect |
| B Fluid has minor to moderate effect | T No data-likely to have minor effect | - No data |

| NAME | % | CONDITIONS | | TPU POLYETHER POLYURETHANE | NBR | PVC | BRASS | ALUMINUM |
|-------------------------|---|------------|-------|----------------------------------|-----|-----|-------|----------|
| | | °C | HOURS | | | | | |
| Water | | 23 | | A | A | A | A | A |
| White spirit | | 21 | 1000 | | | C | A | A |
| Xylene | | | | C | X | C | - | - |
| Xylene | | 60 | 1000 | | | | | |
| Zinc chloride | 3 | 100 | 10 | B | | | | |
| Zinc chloride solutions | | | | B | B | B | X | X |

Because we continually examine ways to improve our products, we reserve the right to alter specifications or discontinue products without prior notice.

Cautionary Statement

All Products sold and distributed by Kuriyama of America, Inc. are in the nature of commodities and they are sold by published specifications and not for particular purposes, uses or applications. Purchaser shall first determine their suitability for the intended purposes, uses or applications and shall either conduct its own engineering studies or tests, or retain qualified engineers, consultants or testing laboratories and consult with them before determining the proper use, suitability or propriety of the merchandise or Products for the intended purposes, uses or applications.

Kuriyama of America, Inc. ("Seller") does not recommend the Products for any particular purpose, use or application, and the Purchaser or user thereof shall assume full responsibility for the suitability, propriety, use and application of the Products. Purchaser shall follow all instructions contained in Seller's catalogs, brochures, technical bulletins and other documents regarding the Products. The Products, including but not limited to, hose, tubing or couplings, may fail due to the use or conveyance of substances at elevated or lowered temperatures or at excessive pressure, the conveyance of abrasive, injurious, flammable, explosive or damaging substances.

Hose or tubing used in bent configurations will be subjected to increased abrasion. Hose clamps or couplings may loosen after initial installation and all sections of hose and tubing including connections, couplings, clamps, conductivity and bonding should be inspected frequently, regularly and consistently, and should be replaced, adjusted or re-tightened for the avoidance of leakage, for the prevention of injuries or damages, and for general safety purposes. Except as indicated in its Limited Warranty, Seller shall not be liable or responsible for direct or indirect injuries or damages caused by or attributed to the failure or malfunction of any Products sold or distributed by it.

Purchasers or users of the Products should frequently and consistently undertake inspections and protective measures with respect to the use and application of Products, which should include the examination of tube and cover, conditions of the hose or tubing, and the identification, repair or replacement of sections showing cracking, blistering, separations, internal and external abrasions, leaking or slipped couplings or connections and make proper proof tests.

Limited Warranty

The Products sold or distributed by Seller are warranted to its customers to be free from defects in material and workmanship at the time of shipment by us, subject to the following provisions. ALL WARRANTY CLAIMS SHALL BE MADE WITHIN SIX (6) MONTHS AFTER SELLER SHIPPED THE PRODUCTS. SELLER'S LIABILITY HEREUNDER IS LIMITED AT SELLER'S EXCLUSIVE DISCRETION, TO 1) THE PURCHASE PRICE OF ANY PRODUCTS PROVING DEFECTIVE; 2) REPAIR OF ANY DEFECTIVE PRODUCT OR PART THEREOF; OR 3) REPLACEMENT OF ANY DEFECTIVE PRODUCT OR PART UPON ITS AUTHORIZED RETURN TO SELLER.

THIS WARRANTY IS IN LIEU OF AND EXCLUDES ALL OTHER WARRANTIES, EXPRESSED, IMPLIED, STATUTORY, OR OTHERWISE CREATED UNDER APPLICABLE LAW INCLUDING, BUT NOT LIMITED TO, THE WARRANTY OF MERCHANTABILITY AND THE WARRANTY OF FITNESS FOR A PARTICULAR PURPOSE. IN NO EVENT SHALL SELLER OR THE MANUFACTURER OF THE PRODUCT BE LIABLE FOR SPECIAL, INCIDENTAL, OR CONSEQUENTIAL DAMAGES, INCLUDING LOSS OF PROFITS, WHETHER OR NOT CAUSED BY OR RESULTING FROM THE NEGLIGENCE OF SELLER AND/OR THE MANUFACTURER OF THE PRODUCT, UNLESS SPECIFICALLY PROVIDED HEREIN. IN ADDITION, THIS WARRANTY SHALL NOT APPLY TO ANY PRODUCTS OR PORTIONS THEREOF WHICH HAVE BEEN SUBJECTED TO ABUSE, MISUSE, IMPROPER INSTALLATION, MAINTENANCE, OR OPERATION, ELECTRICAL FAILURE OR ABNORMAL CONDITIONS, AND TO PRODUCTS WHICH HAVE BEEN TAMPERED WITH, ALTERED, MODIFIED, REPAIRED, REWORKED BY ANYONE NOT APPROVED BY SELLER, OR USED IN ANY MANNER INCONSISTENT WITH THE PROVISIONS OF THE "CAUTIONARY STATEMENT" ABOVE OR ANY INSTRUCTIONS OR SPECIFICATIONS PROVIDED WITH OR FOR THE PRODUCT. 05/03/21 REV

Distributed by:



HEADQUARTERS AND SALES OFFICE

150 N Martingale Road, Suite 900, Schaumburg, IL 60173-5335
Phone: (847) 755-0360 • Toll-free Fax: (800) 800-0320

International Fax: (847) 885-0996

kuriyama.com

sales@kuriyama.com



The trademarks contained in this publication are trademarks of Kuriyama of America, Inc.

©2025 Kuriyama of America, Inc. All rights reserved.

SALES & WAREHOUSE LOCATIONS

CENTRAL DISTRIBUTION CENTER

KURIYAMA OF AMERICA, INC.

14200 Commerce Court
Huntley, IL 60142

☎ (847) 755-0360

📠 (800) 800-0320

🌐 kuriyama.com ✉ sales@kuriyama.com

SOUTHWEST WAREHOUSE

KURIYAMA OF AMERICA, INC.

– HOUSTON

200 Portwall Street, Suite 100
Houston, TX 77029

☎ (713) 674-8212 OR ☎ (800) 501-6808

📠 (713) 674-5214 OR 📠 (800) 800-5214

✉ sales@kuriyama.com

WESTERN WAREHOUSE

KURIYAMA OF AMERICA, INC.

– RENO

12910 Old Virginia Road, Suite 100
Reno, NV 89521

☎ (562) 941-4507

📠 (562) 941-8940 OR 📠 (800) 326-8940

✉ sales@kuriyama.com

SOUTHEAST WAREHOUSE

FORTNEY SALES CO., INC.

4221 Cantrell Road NW
Acworth, GA 30101

☎ (770) 427-6528

📠 (770) 423-9249 OR 📠 (800) 423-9249

🌐 FortneySales.com ✉ sales@fortneysales.com

EASTERN WAREHOUSE

EASTERN RUBBER & PLASTICS CO., INC.

100 Goldman Dr.
Plumsted Industrial Park
Cream Ridge, NJ 08514

☎ (609) 758-0100

📠 (609) 758-0102 OR 📠 (800) 445-7138

🌐 EasternRubber.com ✉ sales@easternrubber.com

IN CANADA

KURI TEC CORPORATION

140 Roy Boulevard
Brantford, ON, Canada N3R 7K2

☎ (519) 753-6717

📠 (519) 753-7737

🌐 Kuritec.com ✉ sales@kuritec.com

IN MEXICO

KURIYAMA DE MÉXICO S DE RL DE CV

Av Jose Palomo Martinez No 520-20 Bodega 5
Parque Industrial Omolap
Apodaca, N.I. CP:66633, México

☎ (81) 1086-1870 0 71

🌐 Kuriyama.com.mx 🌐 Kuriyama.com

✉ servicioalcliente@kuriyama.com



Printed in U. S. A.

KLFP0A0525