

HOSE PRODUCTS, INC.
A Kuriyama Group Company

"The Only Name in Sewer Cleaning"



KURIYAMA
OF AMERICA, INC.





HOSE PRODUCTS, INC.

A Kuriyama Group Company

Table of Contents

Index by Product Series/Part Number	Page 3
Sewer Cleaning Hoses Applications, Construction, Temperature, Features & Advantages and Lengths.....	Page 5
High Pressure Sewer and Jetting Cleaning Hoses	Page 6
2,500 PSI SPOR Series	
3,000 PSI HPBU Series	
4,000 PSI LLGR Series	Pages 6, 11
Slither® High Pressure Sewer and Jetting Cleaning Hoses	Page 7
2,500 PSI SLSPOR Series	
3,000 PSI SLHPBU Series	
4,000 PSI SLGR Series	Pages 7, 12
Armor Belt® Applications, Construction, Temperature, Features & Advantages and Lengths.....	Page 8
Armor Belt® Sewer Cleaning Hoses	Page 9
2,500 PSI SAOR Series	
3,000 PSI HABU Series	
4,000 PSI LAGR Series	
Jetting Line Hoses Applications, Construction, Temperature, Features & Advantages and Lengths.....	Page 10
Jetting/Lateral Line Hoses	Page 11
3,000 PSI LLBU Series	
4,000 PSI LLGR Series	Pages 6, 11
4,000 PSI High Burst SHBK, LHBK Series	
5,000 PSI LLRD Series	
Slither® Jetting/Lateral Line Hoses	Page 12
3,000 PSI SLBU Series	
4,000 PSI SLGR Series	Pages 7, 12
4,000 PSI High Burst SLSHBK, SLLHBK Series	
5,000 PSI SLRD Series	
Custom Hose Length Inquiry.....	Page 14
Custom Bonding Available	Page 15
Fittings and Accessories for Piranha Hoses & Swaging Equipment.....	Page 16–23
Technical Information-Conversion Charts	Page 24
Warning Information	Page 25
Cautionary Statement and Limited Warranty.....	Page 27
Find Piranha Hose Sewer Cleaning Products in your area	Back

THE TRADEMARKS CONTAINED IN THIS PUBLICATION ARE TRADEMARKS OF KURIYAMA OF AMERICA, INC.

Because we continually examine ways to improve our products, we reserve the right to alter specifications or discontinue products without prior notice.



HOSE PRODUCTS, INC.
A Kuriyama Group Company

Index by Product Series/Part Number

Hose Series	Page
HABU	9
HPBU	6
LAGR	9
LHBK	11
LLBU	11
LLGR	6,11
LLRD	11
SAOR	9
SHBK	11
SLBU	12
SLGR	7,12
SLHPBU	7
SLLHBK	12
SLRD	12
SLSHBK	12
SLSPOR	7
SPOR	6

Hose Fittings Part Numbers	Page
A06FPX06FS	16
A08FPX08FS	16
A12FPX12FS	16
F02NPT2	17
F03NPT2	17
F03NPT4	17
F04MSNPT4	16
F04NPT4	17
F06MSNPT6	16
F06NPT6	17
F08FS8	18
F08MEND	18
F08MSNPT8	16
F08NPT8	17
F10MEND	18
F10NPT8	17
F12FS12	18
F12MEND	18
F12NPT12	17
F16FS16	18
F16MEND	18
F16NPT16	17
F20MEND	18
F20NPT20	17
FA10MEND	18
FAR08FS8	18
FAR08MEND	18
FAR08NPT8	17
FAR12FS12	18
FAR12MEND	18
FAR12NPT12	17
FAR16FS16	18
FAR16MEND	18
FAR16NPT16	17
FAR20NPT20	17
FCP06NPT6-NS	17
FHP08FS8	18
FHP08NPT8	17
FHP10NPT8	17
FLL08MEND	18

Dies/Pushers/Swagers Part Numbers	Page
DP04FSTH	20
DP06FSTH	20
DP04MSTH	20
DP06MSTH	20
DP08MSTH	20
DP02TH	19
DP04TH	19
DP06TH	19
DP08FSTH	20
DP08TH	19
DP12FSTH	20
DP12TH	19
DP16FSTH	20
DP16TH	19
DP20TH	19
DS02TH	21
DS03TH	21
DS04TH	21
DS06TH	21
DS08TH	21
DS10TH	21
DS12TH	21
DS16TH	21
DS20TH	21
DSAR08TH	21
DSAR12TH	21
DSAR16TH	21
DSAR20TH	21
DSSHPO8TH	21
PHP50-02FS	23
PHP50-02M	23
PHP50-04FS	23
PHP50-04FS	23
PHP50-04M	23
PHP50-04MS	23
PHP50-06FS	23
PHP50-06M	23
PHP50-06MS	23
PHP50-08FS	23
PHP50-08M	23
PHP50-08MS	23
SWAGE-HANDTH	22
SWAGE-HYDTH	22
SWAGE-LLTH	23
PHPSWAGE-MPTH	22

Because we continually examine ways to improve our products, we reserve the right to alter specifications or discontinue products without prior notice.

[illegible]

Pressure Testing - All Piranha Sewer Hoses are 100% pressure tested.

General Applications:

- **High Pressure Sewer Cleaning** - Applications for commercial, industrial and residential.
- **Tight Pipe Bends** - Slick, Slither® cover affords an easier handling hose to get the job done.

Construction:

- **Inner Tube** - Yellow seamless thermoplastic tube. (Sewer Cleaning Hoses: 2,500 PSI, 3,000 PSI, 4,000 PSI & 5,000 PSI)
- **Reinforcement** - High tensile one or two synthetic fiber braids.
- **Cover** - Polyurethane abrasion resistant. (Standard)



Temperature:

- **Service Temperature Range** - See individual hose specifications for temperature ratings.

Features & Advantages:

- **Materials** - Constructed to provide rugged and reliable service under the most severe and demanding conditions.
- **Yellow Color Tube** - Assures the user that they are using a WASTEC designated Piranha Hose Product.
- **Polyolefin or Seamless Thermoplastic Tube** - Provides maximum resistance to hydrolysis.
- **High Tensile One or Two Synthetic Fiber Braids** - Contributes to low volumetric expansion and eliminates loss of strength from moisture absorption.
- **Abrasion Resistant Polyurethane** - Polyurethane cover provides exceptional cut, abrasion and fungus resistance.
- **Slither® Cover** - Cover is ultra slippery; allows hose to maneuver around and through difficult sewer bends.
- **End Fittings** - Hoses are assembled Male X Male NPT threads as a standard, but other thread configurations are available.
- **Slither®** - Polyurethane-low coefficient of friction. (Optional)

Industry Standards:

- **Orange Cover** = 2,500 PSI
- **Blue Cover** = 3,000 PSI
- **Green Cover** = 4,000 PSI
- **Black Cover** = 4,000 PSI (High Burst)

Lengths:

- **Standard Lengths** - Continually leading to create, establish and stock industry standard lengths.
- **Custom Lengths** - Available and made to order.



Because we continually examine ways to improve our products, we reserve the right to alter specifications or discontinue products without prior notice.

Sewer Cleaning Hoses

2,500 PSI SPOR Series



A yellow polyolefin tube, single high tensile synthetic fiber braid reinforcement and abrasion resistant orange polyether-urethane cover.

Nominal Specifications

Service Temperature Range: -40°F (-40°C) to +150°F (+66°C)

Series Number	ID		OD		Max. Working Pressure		Min. Burst Pressure		Min. Bend Radius		Weight (lbs/ft)
	(in)	(mm)	(in)	(mm)	(psi)	(bar)	(psi)	(bar)	(in)	(mm)	
SPOR-10	5/8	16.0	0.96	24.4	2500	172.4	6250	430.9	4.00	101.6	0.19
SPOR-12	3/4	19.1	1.18	30.0	2500	172.4	6250	430.9	5.00	127.0	0.28
SPOR-16	1	25.4	1.46	37.1	2500	172.4	6250	430.9	6.00	152.4	0.40
SPOR-20	1 1/4	32.0	1.80	45.7	2500	172.4	6250	430.9	8.00	203.2	0.59
SPOR-24	1 1/2	38.1	2.18	55.4	2500	172.4	6250	430.9	15.00	381.0	0.94

3,000 PSI HPBU Series



A yellow polyolefin tube, double high tensile synthetic fiber braid reinforcement and abrasion resistant blue polyether-urethane cover.

Nominal Specifications

Service Temperature Range: -40°F (-40°C) to +150°F (+66°C)

Series Number	ID		OD		Max. Working Pressure		Min. Burst Pressure		Min. Bend Radius		Weight (lbs/ft)
	(in)	(mm)	(in)	(mm)	(psi)	(bar)	(psi)	(bar)	(in)	(mm)	
HPBU-12	3/4	19.1	1.18	30.0	3000	206.8	7500	517.1	5.00	127.0	0.29
HPBU-16	1	25.4	1.48	37.6	3000	206.8	7500	517.1	8.00	203.2	0.41
HPBU-20	1 1/4	31.2	1.80	45.7	3000	206.8	7500	517.1	10.00	234.0	0.59

Jetting Line Hoses

4,000 PSI LLGR Series



A yellow seamless polyolefin tube, double high tensile synthetic fiber braid reinforcement and abrasion resistant green polyether-urethane cover.

Nominal Specifications

Service Temperature Range: -40°F (-40°C) to +150°F (+66°C)

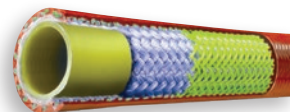
Series Number	ID		OD		Max. Working Pressure		Min. Burst Pressure		Min. Bend Radius		Weight (lbs/ft)
	(in)	(mm)	(in)	(mm)	(psi)	(bar)	(psi)	(bar)	(in)	(mm)	
LLGR-12	3/4	19.1	1.30	33.0	4000	275.8	10000	689.5	5.00	127.0	0.41
LLGR-16	1	25.4	1.63	41.4	4000	275.8	10000	689.5	8.00	152.4	0.65

Because we continually examine ways to improve our products, we reserve the right to alter specifications or discontinue products without prior notice.

Slither® Sewer Cleaning Hoses



SLITHER® 2,500 PSI SLSPOR Series



A yellow polyolefin tube, single high tensile synthetic fiber braid reinforcement and abrasion resistant slick orange polyether-urethane cover.

Nominal Specifications

Service Temperature Range: -40°F (-40°C) to +150°F (+66°C)

Series Number	ID		OD		Max. Working Pressure		Min. Burst Pressure		Min. Bend Radius		Weight (lbs/ft)
	(in)	(mm)	(in)	(mm)	(psi)	(bar)	(psi)	(bar)	(in)	(mm)	
SLSPOR-10	5/8	16.0	0.96	24.4	2500	172.4	6250	430.9	4.00	101.6	0.19
SLSPOR-12	3/4	19.1	1.18	30.0	2500	172.4	6250	430.9	5.00	127.0	0.28
SLSPOR-16	1	25.4	1.46	37.1	2500	172.4	6250	430.9	6.00	152.4	0.40
SLSPOR-20	1 1/4	32.0	1.80	45.7	2500	172.4	6250	430.9	8.00	203.2	0.59
SLSPOR-24	1 1/2	38.1	2.18	55.4	2500	172.4	6250	430.9	15.00	381.0	0.94



SLITHER® 3,000 PSI SLHPBU Series



A yellow polyolefin tube, double high tensile synthetic fiber braid reinforcement and abrasion resistant slick blue polyether-urethane cover.

Nominal Specifications

Service Temperature Range: -40°F (-40°C) to +150°F (+66°C)

Series Number	ID		OD		Max. Working Pressure		Min. Burst Pressure		Min. Bend Radius		Weight (lbs/ft)
	(in)	(mm)	(in)	(mm)	(psi)	(bar)	(psi)	(bar)	(in)	(mm)	
SLHPBU-12	3/4	19.1	1.18	30.0	3000	206.8	7500	517.1	5.00	127.0	0.29
SLHPBU-16	1	25.4	1.48	37.6	3000	206.8	7500	517.1	8.00	203.2	0.41
SLHPBU-20	1 1/4	31.2	1.80	45.7	3000	206.8	7500	517.1	10.00	254.0	0.59

Slither® Jetting Line Hoses



SLITHER® 4,000 PSI SLGR Series



A yellow seamless polyolefin tube, double high tensile synthetic fiber braid reinforcement and abrasion resistant slick green polyether-urethane cover.

Nominal Specifications

Service Temperature Range: -40°F (-40°C) to +150°F (+66°C)

Series Number	ID		OD		Max. Working Pressure		Min. Burst Pressure		Min. Bend Radius		Weight (lbs/ft)
	(in)	(mm)	(in)	(mm)	(psi)	(bar)	(psi)	(bar)	(in)	(mm)	
SLGR-12	3/4	19.1	1.30	33.0	4000	275.8	10000	689.5	5.00	127.0	0.41
SLGR-16	1	25.4	1.63	41.4	4000	275.8	10000	689.5	8.00	152.4	0.65

Because we continually examine ways to improve our products, we reserve the right to alter specifications or discontinue products without prior notice.



HOSE PRODUCTS, INC.
A Kuriyama Group Company

Armor Belt® Hoses

Applications, Construction, Temperature,
Features & Advantages and Lengths



MADE IN THE
USA

Pressure Testing - All Piranha Sewer Hoses are 100% pressure tested.

Armor Belt® Sewer Cleaning Hose by Piranha® Hose Products, Inc. features an innovative process that adds value to your sewer hose purchase by adding life to the hose. Armor Belt® hose is a must when the application calls for extreme durability while maintaining flexibility. It also improves cut and abrasion resistance. It's the ideal hose for the demanding and harsh environment of sewer cleaning.

General Applications:

- **Harsh Environments** - Demanding sewer cleaning environments requiring additional abrasion resistance.
- **High Pressure/Abrasion** - High pressure sewer cleaning applications.

Construction:

- **Inner Tube Material** - Yellow seamless thermoplastic tube.
- **Reinforcement** - High tensile one or two synthetic fiber braids.
- **Polymer Belting** - Protects reinforcement.
- **Cover Material** - Abrasion resistant polyurethane, perforated bonded construction - materials are chemically bonded together.

Temperature:

- **Service Temperature Range** - See individual hose specifications for temperature ratings.

Features & Advantages:

- **Patented Armor Belt Construction** - Increases hose abrasion and cut resistance for longer service life. Greatly increased crush resistance. Provides rugged and reliable service.
- **Yellow Seamless Thermoplastic Tube** - Provides maximum resistance to hydrolysis.
- **High Tensile Synthetic Fiber Reinforcement** - Contributes to low volumetric expansion and eliminates loss of strength from moisture absorption.
- **Polyurethane Cover** - Provides fungus resistance.
- **Unique Construction** - All hose components are chemically bonded to maximize hose service life.
- **Optional Slither® Ultra Slick Cover** - Design is also available; check with factory for details.
- **End Fittings** - Hoses are assembled Male X Male NPT threads as a standard, but other thread configurations are available.
- **Slither® Cover Version** - Polyurethane low coefficient of friction. (Optional)

Industry Standards:

- **Orange Cover** = 2,500 PSI
- **Blue Cover** = 3,000 PSI
- **Green Cover** = 4,000 PSI

Lengths:

- **Standard Lengths** - Continually leading to create, establish and stock industry standard lengths.
- **Custom Lengths** - Available and made to order.



Because we continually examine ways to improve our products, we reserve the right to alter specifications or discontinue products without prior notice.



HOSE PRODUCTS, INC.
A Kuriyama Group Company

Armor Belt®

The Toughest Hose in the Market

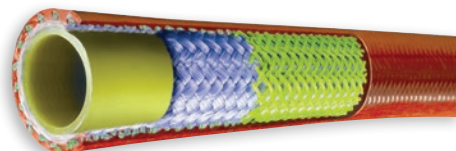


MADE IN THE
USA

- Lightweight • Extremely durable against normal wear and tear • Highly abrasive resistant • Excellent cut resistance • Greatly increased crush resistance • Designed to be tougher and last longer



2,500 PSI SAOR Series



A yellow polyolefin tube, single high tensile synthetic fiber braid reinforcement, rugged polymer belting and abrasion resistant orange polyether-urethane cover.

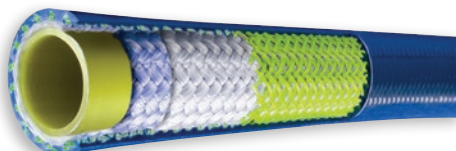
Nominal Specifications

Service Temperature Range: -40°F (-40°C) to +150°F (+66°C)

Series Number	ID		OD		Max. Working Pressure		Min. Burst Pressure		Min. Bend Radius		Weight (lbs/ft)
	(in)	(mm)	(in)	(mm)	(psi)	(bar)	(psi)	(bar)	(in)	(mm)	
SAOR-12	3/4	19.1	1.31	33.3	2500	172.4	6250	430.9	5.00	127.0	0.36
SAOR-16	1	25.4	1.55	39.4	2500	172.4	6250	430.9	6.00	152.4	0.50
SAOR-20	1 1/4	31.8	1.87	47.5	2500	172.4	6250	430.9	7.00	177.8	0.66



3,000 PSI HABU Series



A yellow polyolefin tube, double high tensile fiber braid reinforcement, rugged polymer belting and abrasion resistant blue polyether-urethane cover.

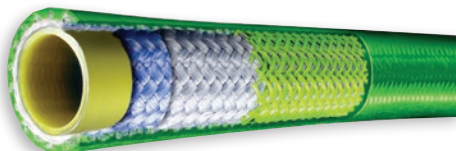
Nominal Specifications

Service Temperature Range: -40°F (-40°C) to +150°F (+66°C)

Series Number	ID		OD		Max. Working Pressure		Min. Burst Pressure		Min. Bend Radius		Weight (lbs/ft)
	(in)	(mm)	(in)	(mm)	(psi)	(bar)	(psi)	(bar)	(in)	(mm)	
HABU-12	3/4	19.4	1.32	33.5	3000	206.8	7500	517.1	5.00	127.0	0.39
HABU-16	1	25.4	1.56	39.6	3000	206.8	7500	517.1	8.00	203.2	0.53



4,000 PSI LAGR Series



A yellow polyolefin tube, double high tensile synthetic fiber braid reinforcement, rugged polymer belting and abrasion resistant green polyether-urethane cover.

Nominal Specifications

Service Temperature Range: -40°F (-40°C) to +190°F (+87°C)

Series Number	ID		OD		Max. Working Pressure		Min. Burst Pressure		Min. Bend Radius		Weight (lbs/ft)
	(in)	(mm)	(in)	(mm)	(psi)	(bar)	(psi)	(bar)	(in)	(mm)	
LAGR-08	1/2	12.7	1.00	25.4	4000	275.8	10000	689.5	3.00	76.2	0.19

Because we continually examine ways to improve our products, we reserve the right to alter specifications or discontinue products without prior notice.



HOSE PRODUCTS, INC.
A Kuriyama Group Company

Jetting Line Hoses

Applications, Temperature, Construction,
Features & Advantages and Lengths



MADE IN THE
USA

Pressure Testing - All Piranha Sewer Hoses are 100% pressure tested.

General Applications:

- **Jetting/Lateral Line** - used for jetting equipment. Applications for commercial, industrial and residential.
- **Tight Pipe Bends** - Slick, Slither® cover affords an easier handling hose to get the job done.

Construction:

- **Inner Tube** - Yellow seamless thermoplastic tube. (Jetting Line Hoses: 3,000 PSI, 4,000 PSI & 5,000 PSI)
- **Reinforcement** - High tensile one or two synthetic fiber braids.
- **Cover** - Abrasion resistant polyurethane. (Standard)



Temperature:

- **Service Temperature Range** - See individual hose specifications for temperature ranges.

Features & Advantages:

- **Materials** - Constructed to provide rugged and reliable service under the most severe and demanding conditions.
- **Yellow Color Tube** - Assures the user that they are using a WASTEC designated Piranha Hose Product.
- **Seamless Thermoplastic Tube** - Provides maximum resistance to hydrolysis.
- **High Tensile One or Two Synthetic Fiber Braids** - Contributes to low volumetric expansion and eliminates loss of strength from moisture absorption.
- **Abrasion Resistant Polyurethane** - Polyurethane cover provides exceptional cut, abrasion and fungus resistance.
- **Slither® Cover** - Cover is ultra slippery; allows hose to maneuver around and through difficult sewer bends.
- **End Fittings** - Hoses are assembled Male X Male NPT threads as a standard, but other thread configurations are available.
- **Slither®** - Polyurethane low coefficient of friction. (Optional)



Industry Standards:

- **Blue Cover** = 3,000 PSI
- **Green Cover** = 4,000 PSI
- **Black Cover** = 4,000 PSI (High Burst)
- **Red Cover** = 5,000 PSI

Lengths:

- **Standard Lengths** - Continually leading to create, establish and stock industry standard lengths.
- **Custom Lengths** - Available and made to order.



Because we continually examine ways to improve our products, we reserve the right to alter specifications or discontinue products without prior notice.



HOSE PRODUCTS, INC.
A Kuriyama Group Company

Jetting Line Hoses



3,000 PSI

LLBU Series

A yellow seamless thermoplastic tube, double high tensile synthetic fiber braid reinforcement and abrasion resistant blue polyurethane cover.

Nominal Specifications

Service Temperature Range: -40°F (-40°C) to +190°F (+87°C)

Series Number	ID		OD		Max. Working Pressure		Min. Burst Pressure		Min. Bend Radius		Weight (lbs/ft)
	(in)	(mm)	(in)	(mm)	(psi)	(bar)	(psi)	(bar)	(in)	(mm)	
LLBU-08	1/2	12.8	0.83	21.2	3000	206.8	7500	517.1	4.00	101.6	0.16



4,000 PSI

LLGR Series

A yellow seamless thermoplastic tube, single or double high tensile synthetic fiber braid reinforcement and abrasion resistant green polyurethane cover.

Nominal Specifications

*** Service Temperature Range 12, 16: -40°F (-40°C) to +150°F (+66°C)
** Service Temperature Range 02, 03: -40°F (-40°C) to +160°F (+71°C)
* Service Temperature Range 04, 06, 08: -40°F (-40°C) to +190°F (+87°C)

Series Number	ID		OD		Max. Working Pressure		Min. Burst Pressure		Min. Bend Radius		Weight (lbs/ft)
	(in)	(mm)	(in)	(mm)	(psi)	(bar)	(psi)	(bar)	(in)	(mm)	
**LLGR-02	1/8	3.6	0.32	8.2	4000	275.8	10000	689.5	1.25	31.2	0.04
**LLGR-03	3/16	4.8	0.41	10.5	4000	275.8	10000	689.5	1.75	44.5	0.05
*LLGR-04	1/4	6.4	0.50	12.6	4000	275.8	10000	689.5	2.50	63.5	0.06
*LLGR-06	3/8	9.7	0.65	16.5	4000	275.8	10000	689.5	3.00	76.2	0.11
*LLGR-08	1/2	12.8	0.83	21.2	4000	275.8	10000	689.5	4.00	101.6	0.16
*** LLGR-12	3/4	19.1	1.30	33.0	4000	275.8	10000	689.5	5.00	127.0	0.41
*** LLGR-16	1	25.4	1.63	41.4	4000	275.8	10000	689.5	8.00	152.4	0.65



HIGH BURST 4,000 PSI

SHBK, LHBK Series

A yellow seamless thermoplastic tube, single or double high tensile synthetic fiber braid reinforcement and abrasion resistant black polyurethane cover.

Nominal Specifications

Service Temperature Range: -40°F (-40°C) to +150°F (+66°C)

Series Number	ID		OD		Max. Working Pressure		Min. Burst Pressure		Min. Bend Radius		Weight (lbs/ft)
	(in)	(mm)	(in)	(mm)	(psi)	(bar)	(psi)	(bar)	(in)	(mm)	
SHBK-08	1/2	12.7	0.87	22.1	4000	275.8	12000	827.4	3.00	76.2	0.20
SHBK-10	5/8	15.9	0.91	23.0	4000	275.8	12000	827.4	4.00	101.6	0.16
LHBK-08	1/2	12.7	0.80	20.3	4000	275.8	16000	1103.2	4.00	101.6	0.15



5,000 PSI

LLRD Series

A yellow seamless thermoplastic tube, double high tensile synthetic fiber braid reinforcement and abrasion resistant red polyurethane cover.

Nominal Specifications

Service Temperature Range: -40°F (-40°C) to +150°F (+66°C)

Series Number	ID		OD		Max. Working Pressure		Min. Burst Pressure		Min. Bend Radius		Weight (lbs/ft)
	(in)	(mm)	(in)	(mm)	(psi)	(bar)	(psi)	(bar)	(in)	(mm)	
LLRD-04	1/4	6.4	0.50	12.6	5000	344.7	12500	861.8	2.50	63.5	0.05
LLRD-06	3/8	9.7	0.65	16.5	5000	344.7	12500	861.8	3.00	76.2	0.13
LLRD-08	1/2	12.8	0.80	20.2	5000	344.7	12500	861.8	4.00	101.6	0.13



Note: Series LLRD-08 has a single high tensile synthetic fiber braid.

Because we continually examine ways to improve our products, we reserve the right to alter specifications or discontinue products without prior notice.



HOSE PRODUCTS, INC.
A Kuriyama Group Company

Slither® Jetting Line Hoses



MADE IN THE
USA



SLITHER® 3,000 PSI SLBU Series



A yellow seamless thermoplastic tube, double high tensile synthetic fiber braid reinforcement and abrasion resistant **slick** blue polyurethane cover.

Nominal Specifications

Service Temperature Range: -40°F (-40°C) to +190°F (+87°C)

Series Number	ID		OD		Max. Working Pressure		Min. Burst Pressure		Min. Bend Radius		Weight
	(in)	(mm)	(in)	(mm)	(psi)	(bar)	(psi)	(bar)	(in)	(mm)	(lbs/ft)
SLBU-08	1/2	12.8	0.83	21.2	3000	206.8	7500	517.1	4.00	101.6	0.16



SLITHER® 4,000 PSI SLGR Series



A yellow seamless thermoplastic tube, single or double high tensile synthetic fiber braid reinforcement and abrasion resistant **slick** green polyurethane cover.

Nominal Specifications

*** Service Temperature Range 12,16: -40°F (-40°C) to +150°F (+66°C)

** Service Temperature Range 02, 03: -40°F (-40°C) to +160°F (+71°C)

* Service Temperature Range 04, 06, 08: -40°F (-40°C) to +190°F (+87°C)

Series Number	ID		OD		Max. Working Pressure		Min. Burst Pressure		Min. Bend Radius		Weight
	(in)	(mm)	(in)	(mm)	(psi)	(bar)	(psi)	(bar)	(in)	(mm)	(lbs/ft)
**SLGR-02	1/8	3.6	0.32	8.2	4000	275.8	10000	689.5	1.25	31.2	0.04
**SLGR-03	3/16	4.8	0.41	10.5	4000	275.8	10000	689.5	1.75	44.5	0.05
*SLGR-04	1/4	6.4	0.50	12.6	4000	275.8	10000	689.5	2.50	63.5	0.06
*SLGR-06	3/8	9.7	0.65	16.5	4000	275.8	10000	689.5	3.00	76.2	0.11
*SLGR-08	1/2	12.8	0.83	21.2	4000	275.8	10000	689.5	4.00	101.6	0.16
*** SLGR-12	3/4	19.1	1.30	33.0	4000	275.8	10000	689.5	5.00	127.0	0.41
*** SLGR-16	1	25.4	1.63	41.4	4000	275.8	10000	689.5	8.00	152.4	0.65



SLITHER® 4,000 PSI HIGH BURST SLSHBK, SLLHBK Series



A yellow seamless thermoplastic tube, single or double high tensile synthetic fiber braid reinforcement and abrasion resistant **slick** black polyurethane cover.

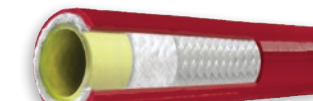
Nominal Specifications

Service Temperature Range: -40°F (-40°C) to +160°F (+71°C)

Series Number	ID		OD		Max. Working Pressure		Min. Burst Pressure		Min. Bend Radius		Weight
	(in)	(mm)	(in)	(mm)	(psi)	(bar)	(psi)	(bar)	(in)	(mm)	(lbs/ft)
SLSHBK-08	1/2	12.7	0.87	22.1	4000	275.8	12000	827.4	3.00	76.2	0.20
SLLHBK-08	1/2	12.7	0.80	20.3	4000	275.8	16000	1103.2	4.00	101.6	0.15
SLLHBK-10	5/8	15.9	0.91	23.0	4000	275.8	12000	827.4	4.00	101.6	0.16



SLITHER® 5,000 PSI SLRD Series



A yellow seamless thermoplastic tube, double high tensile synthetic fiber braid reinforcement and abrasion resistant **slick** red polyurethane cover. Note: Series SLRD-08 has a single high tensile synthetic fiber braid.

Nominal Specifications

Service Temperature Range: -40°F (-40°C) to +160°F (+71°C)

Series Number	ID		OD		Max. Working Pressure		Min. Burst Pressure		Min. Bend Radius		Weight
	(in)	(mm)	(in)	(mm)	(psi)	(bar)	(psi)	(bar)	(in)	(mm)	(lbs/ft)
SLRD-04	1/4	6.4	0.50	12.6	5000	344.7	12500	861.8	2.50	63.5	0.05
SLRD-06	3/8	9.7	0.65	16.5	5000	344.7	12500	861.8	3.00	76.2	0.13
SLRD-08	1/2	12.8	0.80	20.2	5000	344.7	12500	861.8	4.00	101.6	0.13

Because we continually examine ways to improve our products, we reserve the right to alter specifications or discontinue products without prior notice.



[illegible]

KURIYAMA
OF AMERICA, INC.

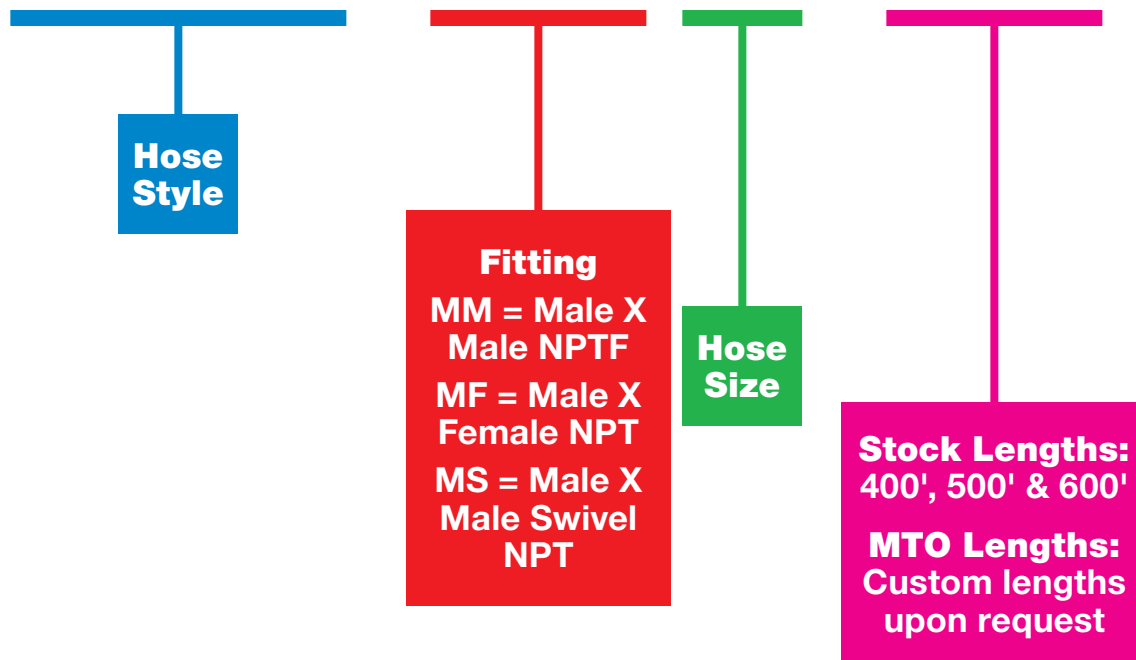
13

KPHPCA1019

Custom Hose Length Inquiry

Assembly Custom Part Numbering System:

Example: SPOR-MM16X250



Please call, fax or email your inquiry to:

Phone: (847) 755-0360
Fax: (847) 885-0996
Email: sales@kuriyama.com

Company Profile

Company Name _____ Contact _____

Address _____ City _____ State _____ Zip _____

Phone _____ Fax _____ E-mail _____

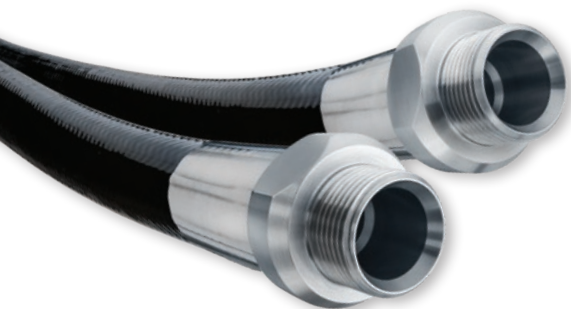
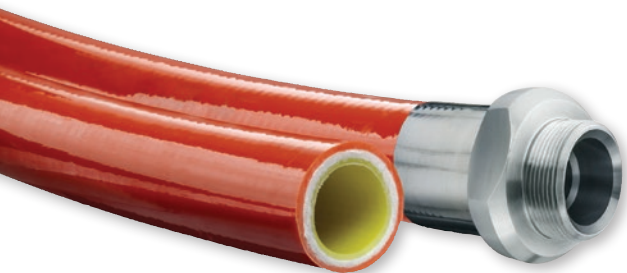
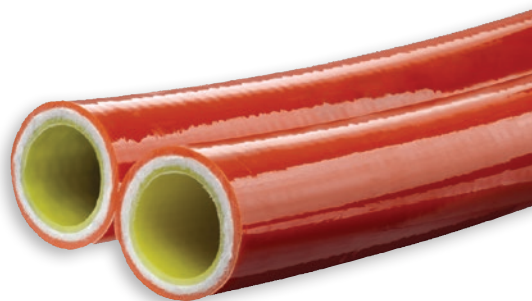
Because we continually examine ways to improve our products, we reserve the right to alter specifications or discontinue products without prior notice.

Custom Bonding Available



Piranha Twin-Line & Multi-Line Processes

- Bonding of hose sizes from 1/8" through 1 1/2" ID from available stocked hoses. Custom configurations available.
- For non-stock hose items, a minimum order of 2,500 ft. is required for twin-line.
- Split-Back ends are provided; typically as lengths of 12", 18" or 24" for ease of coupling and assembly.
- Intermittent bonding can also be provided in lengths to meet your applications needs.
- Special packaging is available as required to meet your application needs.



Custom Twin and Multi-Line hoses are available on request and are made to order.

For more information contact Kuriyama of America, Inc.

Phone: (847) 755-0360 • Toll-free FAX: (800) 800-0320 • International FAX: (847) 885-0996

Web Site: www.kuriyama.com • E-Mail: sales@kuriyama.com

Because we continually examine ways to improve our products, we reserve the right to alter specifications or discontinue products without prior notice.



HOSE PRODUCTS, INC.
A Kuriyama Group Company

Sewer & Lateral Line Hose Fittings



**MADE IN THE
USA**



FEMALE ADAPTER FITTINGS

Hose ID (in)	Use With Hose Series	Female Adapter Part Number	Weight (lbs/each)
3/8	LLGR-06	A06FPX06FS	0.16
3/8	SLGR-06	A06FPX06FS	0.16
1/2	LAGR-08	A08FPX08FS	0.21
1/2	LHBK-08	A08FPX08FS	0.21
1/2	LLBU-08	A08FPX08FS	0.21
1/2	LLGR-08	A08FPX08FS	0.21
1/2	LLRD-08	A08FPX08FS	0.21
1/2	SHBK-08	A08FPX08FS	0.21
1/2	SLBU-08	A08FPX08FS	0.21
1/2	SLGR-08	A08FPX08FS	0.21
1/2	SLLHBK-08	A08FPX08FS	0.21
1/2	SLRD-08	A08FPX08FS	0.21
1/2	SLSHBK-08	A08FPX08FS	0.21
5/8	SAOR-10	A08FPX08FS	0.21
5/8	SHBK-10	A08FPX08FS	0.21
5/8	SLSHBK-10	A08FPX08FS	0.21
5/8	SLSPOR-10	A08FPX08FS	0.21
5/8	SPOR-10	A08FPX08FS	0.21
3/4	HPBU-12	A12FPX12FS	0.34
3/4	SLHPBU-12	A12FPX12FS	0.34
3/4	SLSPOR-12	A12FPX12FS	0.34
3/4	SPOR-12	A12FPX12FS	0.34



MALE SWIVEL FITTINGS

Hose ID (in)	Use With Hose Series	Male Swivel Part Number	Weight (lbs/each)
1/4	LLGR-04	F04MSNPT4	0.17
1/4	LLRD-04	F04MSNPT4	0.17
1/4	SLGR-04	F04MSNPT4	0.17
1/4	SLRD-04	F04MSNPT4	0.17
3/8	LLGR-06	F06MSNPT6	0.23
3/8	SLGR-06	F06MSNPT6	0.23
1/2	LHBK-08	F08MSNPT8	0.35
1/2	LLBU-08	F08MSNPT8	0.35
1/2	LLGR-08	F08MSNPT8	0.35
1/2	LLRD-08	F08MSNPT8	0.35
1/2	SLGR-08	F08MSNPT8	0.35

NOTE: THE USE OF FITTINGS AND ASSEMBLY TOOLING OTHER THAN THAT SUPPLIED BY PIRANHA HOSE PRODUCTS IS AT THE RISK AND LIABILITY OF THE USER.

Because we continually examine ways to improve our products, we reserve the right to alter specifications or discontinue products without prior notice.



KURIYAMA
OF AMERICA, INC.

kuriyama.com

Sewer & Lateral Line Hose Fittings



MALE FITTINGS

Hose ID (in)	Use With Hose Series	Male Part Number	Weight (lbs/each)
1/8	LLGR-02	F02NPT2	0.04
1/8	SLGR-02	F02NPT2	0.04
3/16X1/8	LLGR-03	F03NPT2	0.08
3/16X1/8	SLGR-03	F03NPT2	0.08
3/16X1/4	LLGR-03	F03NPT4	0.10
3/16X1/4	SLGR-03	F03NPT4	0.10
1/4	LLGR-04	F04NPT4	0.12
1/4	LLRD-04	F04NPT4	0.12
1/4	SLGR-04	F04NPT4	0.12
1/4	SLRD-04	F04NPT4	0.12
3/8	LLGR-06	F06NPT6	0.17
3/8	LLRD-06	FCP06NPT-NS	0.18
3/8	SLGR-06	F06NPT6	0.17
3/8	SLRD-06	FCP06NPT-NS	0.18
1/2	LAGR-08	FAR08NPT8	0.35
1/2	LHBK-08	F08NPT8	0.28
1/2	LLBU-08	F08NPT8	0.28
1/2	LLGR-08	F08NPT8	0.28
1/2	LLRD-08	F08NPT8	0.28
1/2	SHBK-08	FHP08NPT8	0.29
1/2	SLBU-08	F08NPT8	0.28
1/2	SLGR-08	F08NPT8	0.28
1/2	SLLHBK-08	F08NPT8	0.28
1/2	SLRD-08	F08NPT8	0.28
1/2	SLSHBK-08	FHP08NPT8	0.29
5/8	SHBK-10	FHP10NPT8	0.34
5/8	SLSHBK-10	FHP10NPT8	0.34
5/8	SLSPOR-10	F10NPT8	0.36
5/8	SPOR-10	F10NPT8	0.36
3/4	HABU-12	FAR12NPT12	0.50
3/4	HPBU-12	F12NPT12	0.43
3/4	SAOR-12	FAR12NPT12	0.50
3/4	SLHPBU-12	F12NPT12	0.43
3/4	SLSPOR-12	F12NPT12	0.43
3/4	SPOR-12	F12NPT12	0.43
1	HABU-16	FAR16NPT16	0.79
1	HPBU-16	F16NPT16	0.71
1	SAOR-16	FAR16NPT16	0.79
1	SLHPBU-16	F16NPT16	0.71
1	SLSPOR-16	F16NPT16	0.71
1	SPOR-16	F16NPT16	0.71
1 1/4	SAOR-20	FAR20NPT20	1.00
1 1/4	SLSPOR-20	F20NPT20	1.00
1 1/4	SPOR-20	F20NPT20	1.00

NOTE: THE USE OF FITTINGS AND ASSEMBLY TOOLING OTHER THAN THAT SUPPLIED BY PIRANHA HOSE PRODUCTS IS AT THE RISK AND LIABILITY OF THE USER.



HOSE PRODUCTS, INC.
A Kuriyama Group Company

Sewer & Lateral Line Hose Fittings



MADE IN THE
USA



FEMALE FITTINGS

Hose ID (in)	Use With Hose Series	Female Part Number	Weight (lbs/each)
3/8	LLRD-06	FCP06FS-NS	0.21
1/2	LAGR-08	FAR08FS8	0.39
1/2	LHBK-08	F08FS8	0.29
1/2	LLBU-08	F08FS8	0.29
1/2	LLGR-08	F08FS8	0.29
1/2	SHBK-08	FHP08FS8	0.30
1/2	SLBU-08	F08FS8	0.29
1/2	SLGR-08	F08FS8	0.29
1/2	SLLHBK-08	F08FS8	0.29
1/2	SLSHBK-08	FHP08FS8	0.30
3/4	HABU-12	FAR12FS12	0.60
3/4	HPBU-12	F12FS12	0.52
3/4	SAOR-12	FAR12FS12	0.60
3/4	SLHPBU-12	F12FS12	0.52
3/4	SLSPOR-12	F12FS12	0.52
3/4	SPOR-12	F12FS12	0.52
1	HABU-16	FAR16FS16	0.89
1	HPBU-16	F16FS16	0.81
1	SAOR-16	FAR16FS16	0.89
1	SLHPBU-16	F16FS16	0.81
1	SLSPOR-16	F16FS16	0.81
1	SPOR-16	F16FS16	0.81



MENDERS

Hose ID (in)	Use With Hose Series	Mender Part Number	Weight (lbs/each)
1/2	LAGR-08	FAR08MEND	0.40
1/2	LHBK-08	FLL08MEND	0.33
1/2	LLBU-08	FLL08MEND	0.33
1/2	LLGR-08	FLL08MEND	0.33
1/2	SHBK-08	F08MEND	0.36
1/2	SLBU-08	FLL08MEND	0.33
1/2	SLGR-08	FLL08MEND	0.33
1/2	SLLHBK-08	FLL08MEND	0.33
1/2	SLSHBK-08	F08MEND	0.36
5/8	SHBK-10	FA10MEND	0.45
5/8	SLSHBK-10	FA10MEND	0.45
5/8	SLSPOR-10	F10MEND	0.47
5/8	SPOR-10	F10MEND	0.47
3/4	HABU-12	FAR12MEND	0.64
3/4	HPBU-12	F12MEND	0.54
3/4	SAOR-12	FAR12MEND	0.64
3/4	SLHPBU-12	F12MEND	0.54
3/4	SLSPOR-12	F12MEND	0.54
3/4	SPOR-12	F12MEND	0.54
1	HABU-16	FAR16MEND	0.99
1	HPBU-16	F16MEND	0.73
1	SAOR-16	FAR16MEND	0.99
1	SLHPBU-16	F16MEND	0.73
1	SLSPOR-16	F16MEND	0.73
1	SPOR-16	F16MEND	0.73
1 1/4	SLSPOR-20	F20MEND	1.04
1 1/4	SPOR-20	F20MEND	1.04

NOTE: WHEN USING A MENDER, 2 DIE SETS ARE REQUIRED TO MEND A HOSE.

NOTE: THE USE OF FITTINGS AND ASSEMBLY TOOLING OTHER THAN THAT SUPPLIED BY PIRANHA HOSE PRODUCTS IS AT THE RISK AND LIABILITY OF THE USER.

Because we continually examine ways to improve our products, we reserve the right to alter specifications or discontinue products without prior notice.



KURIYAMA
OF AMERICA, INC.

kuriyama.com



HOSE PRODUCTS, INC.
A Kuriyama Group Company

**NEW
SIZES**

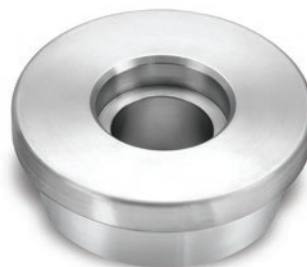
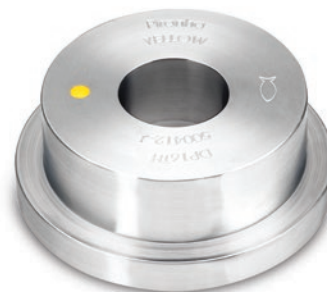


**MADE IN THE
USA**

NOTE: ONE DIE SET AND
A PUSHER ARE REQUIRED TO
COMPLETE AN ASSEMBLY.

MALE PUSHERS

Hose ID (in)	Use With Hose Series	Male Part Number	Weight (lbs/each)
1/8	LLGR-02	DP02TH	2.33
1/8	SLGR-02	DP02TH	2.33
3/16	LLGR-03	DP02TH	2.33
3/16	SLGR-03	DP02TH	2.33
1/4	LLGR-04	DP04TH	2.33
1/4	LLRD-04	DP04TH	2.33
1/4	SLGR-04	DP04TH	2.33
1/4	SLRD-04	DP04TH	2.33
3/8	LLGR-06	DP06TH	2.33
3/8	SLGR-06	DP06TH	2.33
1/2	LAGR-08	DP08TH	2.19
1/2	LHBK-08	DP08TH	2.23
1/2	LLBU-08	DP08TH	2.23
1/2	LLGR-08	DP08TH	2.23
1/2	LLRD-08	DP08TH	2.23
1/2	SHBK-08	DP08TH	2.23
1/2	SLBU-08	DP08TH	2.23
1/2	SLGR-08	DP08TH	2.23
1/2	SLLHBK-08	DP08TH	2.23
1/2	SLRD-08	DP08TH	2.23
1/2	SLSHBK-08	DP08TH	2.23
5/8	SHBK-10	DP08TH	2.23
5/8	SLSHBK-10	DP08TH	2.23
5/8	SLSPOR-10	DP08TH	2.23
5/8	SPOR-10	DP08TH	2.23
3/4	HABU-12	DP12TH	2.07
3/4	HPBU-12	DP12TH	2.11
3/4	SAOR-12	DP12TH	2.07
3/4	SLHPBU-12	DP12TH	2.11
3/4	SLSPOR-12	DP12TH	2.11
3/4	SPOR-12	DP12TH	2.11
1	HABU-16	DP16TH	1.77
1	HPBU-16	DP16TH	1.81
1	SAOR-16	DP16TH	1.77
1	SLHPBU-16	DP16TH	1.81
1	SLSPOR-16	DP16TH	1.81
1	SPOR-16	DP16TH	1.81
1 1/4	SAOR-20	DP20TH	1.39
1 1/4	SLSPOR-20	DP20TH	1.66
1 1/4	SPOR-20	DP20TH	1.66



Because we continually examine ways to improve our products, we reserve the right to alter specifications or discontinue products without prior notice.



HOSE PRODUCTS, INC.
A Kuriyama Group Company

**NEW
PRODUCT**

MALE SWIVEL PUSHERS

Hose ID (in)	Use With Hose Series	Male Part Number	Weight (lbs/each)
1/4	LLGR-04	DP04MSTH	4.03
1/4	LLRD-04	DP04MSTH	4.03
1/4	SLGR-04	DP04MSTH	4.03
1/4	SLRD-04	DP04MSTH	4.03
3/8	LLGR-06	DP06MSTH	3.85
3/8	LLRD-06	DP06MSTH	3.85
3/8	SLGR-06	DP06MSTH	3.85
3/8	SLRD-06	DP06MSTH	3.85
1/2	LLBK-08	DP08MSTH	3.86
1/2	LLBU-08	DP08MSTH	3.86
1/2	LLGR-08	DP08MSTH	3.86
1/2	LLRD-08	DP08MSTH	3.86
1/2	SLBU-08	DP08MSTH	3.86
1/2	SLGR-08	DP08MSTH	3.86
1/2	SLLHBK-08	DP08MSTH	3.86
1/2	SLRD-08	DP08MSTH	3.86

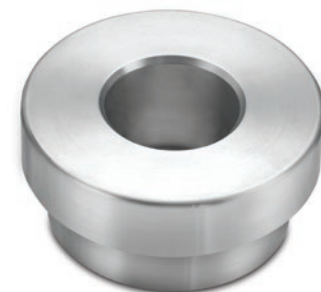


**MADE IN THE
USA**

**NEW
SIZES**

FEMALE PUSHERS

Hose ID (in)	Use With Hose Series	Female Part Number	Weight (lbs/each)
1/4	LLGR-04	DP04FSTH	4.04
1/4	LLRD-04	DP04FSTH	4.04
1/4	SLGR-04	DP04FSTH	4.04
1/4	SLRD-04	DP04FSTH	4.04
3/8	LLGR-06	DP06FSTH	3.96
3/8	LLRD-06	DP06FSTH	3.96
3/8	SLGR-06	DP06FSTH	3.96
3/8	SLRD-06	DP06FSTH	3.96
1/2	LAGR-08	DP08FSTH	2.75
1/2	LHBK-08	DP08FSTH	2.18
1/2	LLBU-08	DP08FSTH	2.18
1/2	LLGR-08	DP08FSTH	2.18
1/2	SHBK-08	DP08FSTH	2.18
1/2	SLBU-08	DP08FSTH	2.18
1/2	SLGR-08	DP08FSTH	2.18
1/2	SLLHBK-08	DP08FSTH	2.18
1/2	SLSHBK-08	DP08FSTH	2.18
3/4	HABU-12	DP12FSTH	2.47
3/4	HPBU-12	DP12FSTH	1.87
3/4	SAOR-12	DP12FSTH	2.47
3/4	SLHPBU-12	DP12FSTH	1.87
3/4	SLSPOR-12	DP12FSTH	1.87
3/4	SPOR-12	DP12FSTH	1.87
1	HABU-16	DP16FSTH	2.18
1	HPBU-16	DP16FSTH	2.18
1	SAOR-16	DP16FSTH	2.18
1	SLHPBU-16	DP16FSTH	2.18
1	SLSPOR-16	DP16FSTH	2.18
1	SPOR-16	DP16FSTH	2.18



NOTE: THE USE OF FITTINGS AND ASSEMBLY TOOLING OTHER THAN THAT SUPPLIED BY PIRANHA HOSE PRODUCTS IS AT THE RISK AND LIABILITY OF THE USER.

Because we continually examine ways to improve our products, we reserve the right to alter specifications or discontinue products without prior notice.



KURIYAMA
OF AMERICA, INC.

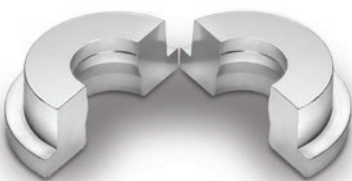
kuriyama.com



HOSE PRODUCTS, INC.
A Kuriyama Group Company

**NEW
SIZES**

NOTE: THE USE OF FITTINGS AND ASSEMBLY TOOLING OTHER THAN THAT SUPPLIED BY PIRANHA HOSE PRODUCTS IS AT THE RISK AND LIABILITY OF THE USER.



DIES

Hose ID (in)	Use With Hose Series	Dies Part Number	Weight (lbs/each)
1/8	LLGR-02	DS02TH	3.81
1/8	SLGR-02	DS02TH	3.81
3/16	LLGR-03	DS03TH	3.81
3/16	SLGR-03	DS03TH	3.81
1/4	LLGR-04	DS04TH	3.81
1/4	SLGR-04	DS04TH	3.81
1/4	LLRD-04	DS04TH	3.81
1/4	SLRD-04	DS04TH	3.81
3/8	SLGR-06	DS06TH	3.81
3/8	LLGR-06	DS06TH	3.81
1/2	LAGR-08	DSAR08TH	3.60
1/2	LHBK-08	DS08TH	3.72
1/2	LLBU-08	DS08TH	3.72
1/2	LLGR-08	DS08TH	3.72
1/2	LLRD-08	DS08TH	3.72
1/2	SHBK-08	DSSHP08TH	2.15
1/2	SLBU-08	DS08TH	3.72
1/2	SLGR-08	DS08TH	3.72
1/2	SLHKBK-08	DS08TH	3.72
1/2	SLRD-08	DS08TH	3.72
1/2	SLSHBK-08	DSSHP08TH	2.15
5/8	SHBK-10	DSAR08TH	2.18
5/8	SLSHBK-10	DSAR08TH	2.18
5/8	SLSPOR-10	DS10TH	3.61
5/8	SPOR-10	DS10TH	3.61
3/4	HABU-12	DSAR12TH	3.35
3/4	HPBU-12	DS12TH	3.45
3/4	SAOR-12	DSAR12TH	3.35
3/4	SLHPBU-12	DS12TH	3.45
3/4	SLSPOR-12	DS12TH	3.45
3/4	SPOR-12	DS12TH	3.45
1	HABU-16	DSAR16TH	3.08
1	HPBU-16	DS16TH	3.21
1	SAOR-16	DSAR16TH	3.08
1	SLHPBU-16	DS16TH	3.21
1	SLSPOR-16	DS16TH	3.21
1	SPOR-16	DS16TH	3.21
1 1/4	SAOR-20	DSAR20TH	2.67
1 1/4	SLSPOR-20	DS20TH	2.83
1 1/4	SPOR-20	DS20TH	2.83



**MADE IN THE
USA**

Because we continually examine ways to improve our products, we reserve the right to alter specifications or discontinue products without prior notice.



HOSE PRODUCTS, INC.
A Kuriyama Group Company

PIRANHA SWAGING EQUIPMENT



MADE IN THE
USA



NEW! **PHP-110 Hand Operated Hydraulic Swaging Machine**

Part Number	Description	Weight (lbs/each)
SWAGE-HYDTH	HYD SWAGER	86.00



NEW! **Horizontal Swage Tool**

Part Number	Description	Weight (lbs/each)
SWAGE-HANDTH	HORIZNTL SWAGER	15.00



NEW! **Swage Hitch Mounting Plate for use with all Piranha Swaging Equipment**

Part Number	Description	Weight (lbs/each)
PHPSWAGE-MPTH	MOUNTING PLATE	17.00



NEW! **PHP-50 Mini Hydraulic Swaging Machine**

Part Number	Description	Weight (lbs/each)
SWAGE-LLTH	MINI HYD SWAGER	31.00

Because we continually examine ways to improve our products, we reserve the right to alter specifications or discontinue products without prior notice.

NOTE: THE USE OF FITTINGS AND ASSEMBLY TOOLING OTHER THAN THAT SUPPLIED BY PIRANHA HOSE PRODUCTS IS AT THE RISK AND LIABILITY OF THE USER.

PHP-50 Swage Mini - Horizontal Swage Tool - Male Pusher

Hose ID (in)	Use With Hose Series	Male Pusher Part Number	Die Set Required	Weight (lbs/each)
1/8	LLGR, SLGR -2	PHP50-02M	DS02TH	1.50
3/16	LLGR, SLGR -3	PHP50-02M or PHP50-04M	DS03TH	1.50
1/4	LLGR, SLGR-4	PHP50-04M	DS04TH	1.50
1/4	LLRD, SLRD -4	PHP50-04M	DS04TH	1.50
3/8	LLGR, SLGR-6	PHP50-06M	DS06TH	1.50
3/8	LLRD, SLRD-6	PHP50-06M	DS065TH	1.50
1/2	LAGR-8	PHP50-08M	DSAR08TH	1.50
1/2	LHBK, SLLHBK-8	PHP50-08M	DS08TH	1.50
1/2	LLBU, SLBU-8	PHP50-08M	DS08TH	1.50
1/2	LLGR, SLGR -8	PHP50-08M	DS08TH	1.50
1/2	LLRD, SLRD-8	PHP50-08M	DS08TH	1.50
1/2	SHBK, SLSHBK-8	PHP50-08M	DSSHP08TH	1.50



NOTE: ONE DIE SET AND A PUSHER ARE REQUIRED TO REPAIR AN END FITTING.

NOTE: THE USE OF FITTINGS AND ASSEMBLY TOOLING OTHER THAN THAT SUPPLIED BY PIRANHA HOSE PRODUCTS IS AT THE RISK AND LIABILITY OF THE USER.

PHP-50 Swage Mini - Horizontal Swage Tool - Female Pusher

Hose ID (in)	Use With Hose Series	Female Pusher Part Number	Die Set Required	Weight (lbs/each)
1/8	LLGR, SLGR -2	N/A	DS02TH	1.50
3/16	LLGR, SLGR -3	N/A	DS03TH	1.50
1/4	LLGR, SLGR-4	N/A	DS04TH	1.50
1/4	LLRD, SLRD -4	N/A	DS04TH	1.50
3/8	LLGR, SLGR-6	N/A	DS06TH	1.50
3/8	LLRD, SLRD-6	PHP50-06FS	DS065TH	1.50
1/2	LAGR-8	PHP50-08FS	DSAR08TH	1.50
1/2	LHBK, SLLHBK-8	PHP50-08FS	DS08TH	1.50
1/2	LLBU, SLBU-8	PHP50-08FS	DS08TH	1.50
1/2	LLGR, SLGR -8	PHP50-08FS	DS08TH	1.50
1/2	LLRD, SLRD-8	PHP50-08FS	DS08TH	1.50
1/2	SHBK, SLSHBK-8	PHP50-08FS	DSSHP08TH	1.50

PHP-50 Swage Mini - Horizontal Swage Tool - Male Swivel Pusher

Hose ID (in)	Use With Hose Series	Male Swivel Pusher Part Number	Die Set Required	Weight (lbs/each)
1/8	LLGR, SLGR -2	NA	DS02TH	1.50
3/16	LLGR, SLGR -3	N/A	DS03TH	1.50
1/4	LLGR, SLGR-4	PHP50-04MS	DS04TH	1.50
1/4	LLRD, SLRD -4	PHP50-04MS	DS04TH	1.50
3/8	LLGR, SLGR-6	PHP50-06MS	DS06TH	1.50
3/8	LLRD, SLRD-6	PHP50-06MS	DS065TH	1.50
1/2	LAGR-8	PHP50-08MS	DSAR08TH	1.50
1/2	LHBK, SLLHBK-8	PHP50-08MS	DS08TH	1.50
1/2	LLBU, SLBU-8	PHP50-08MS	DS08TH	1.50
1/2	LLGR, SLGR -8	PHP50-08MS	DS08TH	1.50
1/2	LLRD, SLRD-8	PHP50-08MS	DS08TH	1.50
1/2	SHBK, SLSHBK-8	PHP50-08MS	DSSHP08TH	1.50

Because we continually examine ways to improve our products, we reserve the right to alter specifications or discontinue products without prior notice.

Technical Information

Conversion Charts

Thread Chart

Dash #	OD Tube Size (in)	BSP	JIC 45°	SAE	NPT (Male)
-2	1/8	1/8-28	5/16-24	5/16-24	1/8-27
-3	3/16		3/8-24	3/8-24	
-4	1/4	1/4-19	7/26-20	7/16-20	1/4-18
-5	5/16		1/2-20	1/2-20	
-6	3/8	3/8-19	9/16-18	9/16-18	3/8-18
-8	1/2	1/2-14	3/4-16	3/4-16	1/2-14
-10	5/8	5/8-14	7/8-14	7/8-14	
-12	3/4	3/4-14	1 1/16-12	1 1/16-12	3/4-14
-16	1	1-11	1 5/16-12	1 5/16-12	1-11 1/2
-20	1 1/4	1 1/4-11	1 5/8-12	1 5/8-12	1 1/4-11 1/2

Decimal Equivalents of Fractions

Fraction (in)	Decimal (in)	Fraction (in)	Decimal (in)	Fraction (in)	Decimal (in)	Fraction (in)	Decimal (in)
1/64	0.016	17/64	0.266	33/64	0.516	49/64	0.766
1/32	0.031	9/32	0.281	17/32	0.531	25/32	0.781
3/64	0.047	19/64	0.297	35/64	0.547	51/64	0.797
1/16	0.063	5/16	0.313	9/16	0.563	11/16	0.813
5/64	0.078	21/64	0.328	37/64	0.578	53/64	0.828
3/32	0.094	11/32	0.344	19/32	0.594	27/32	0.844
7/64	0.109	23/64	0.359	39/64	0.609	55/64	0.859
1/8	0.125	3/8	0.375	5/8	0.625	7/8	0.875
9/64	0.141	25/64	0.391	41/64	0.641	57/64	0.891
5/32	0.156	13/32	0.406	21/32	0.656	29/32	0.906
11/64	0.172	27/64	0.422	43/64	0.672	59/64	0.922
3/16	0.188	7/16	0.438	11/16	0.688	15/16	0.938
13/64	0.203	29/64	0.453	45/64	0.703	61/64	0.953
7/32	0.219	15/32	0.469	23/32	0.719	31/32	0.969
15/64	0.234	31/64	0.484	47/64	0.734	63/64	0.984
1/4	0.250	1/2	0.500	3/4	0.750	1.000	1.000

Because we continually examine ways to improve our products, we reserve the right to alter specifications or discontinue products without prior notice.

WARNING!


IF YOU SEE “IT” – STOP “IT”: FAILURE TO PROPERLY REPAIR OR REPLACE HOSE AFTER EXPOSING WHITE BRAID REINFORCEMENT LAYER CAN CAUSE DEATH, PERSONAL INJURY AND PROPERTY DAMAGE.

Like strands in a bridge cable, each reinforcement fiber plays an exact role in the ultimate burst strength of the hose. A **minor** slice or nick in the reinforcement can result in total hose failure.

The age of the hose ***does not matter***! It is unfortunate, but even a hose used (1) time can be damaged in severe applications. These hoses must be immediately removed from service.



DANGER
***READ AND UNDERSTAND
THE FOLLOWING:***

 **Warning:** This product can expose you to chemicals, including lead or titanium dioxide, which is known to the State of California to cause cancer and birth defects or other reproductive harm. For more information, go to www.P65warnings.ca.gov.

HOSE BASICS

1. NEVER EXCEED THE MAXIMUM WORKING **PRESSURE**.
2. NEVER EXCEED THE MAXIMUM WORKING **TEMPERATURE**.
3. NEVER APPLY PRESSURE TO A **DAMAGED** HOSE.
4. HIGH PRESSURE HOSES ARE DESIGNED TO USE SPECIFIC **FITTINGS** AND **TOOLING**. NEVER USE A DIFFERENT **BRAND** OF FITTINGS OR TOOLING. FAILURE TO DO SO CAN CAUSE DEATH, PERSONAL INJURY AND/OR PROPERTY DAMAGE.
5. A **KINKED**, **CRUSHED**, OR **BLISTERED** HOSE WILL EVENTUALLY FAIL – DO NOT RISK INJURY. IMMEDIATELY REPAIR OR REMOVE HOSE FROM SERVICE.
6. FOLLOW THE PUMP/EQUIPMENT MANUFACTURER'S **INSTRUCTIONS** FOR PRESSURIZED HOSE TESTING.

Because we continually examine ways to improve our products, we reserve the right to alter specifications or discontinue products without prior notice.

[illegible]



HOSE PRODUCTS, INC.

A Kuriyama Group Company

Cautionary Statement

All products sold and distributed by Piranha Hose Products are in the nature of commodities and they are sold by published specifications and not for particular purposes, uses, or application. Purchaser shall first determine their suitability for the intended purposes, uses or applications and shall either conduct its own engineering studies or tests, or retain qualified engineers, consultants or testing laboratories and consult with them before determining the proper use, suitability or propriety of the merchandise or Products for the intended purposes, uses, or applications.

Piranha Hose Products ("Seller") does not recommend that the Products for any particular purpose, use or application, and the Purchaser or user thereof shall assume full responsibility for the suitability, propriety, use and application of the Products. Purchaser shall follow all instructions contained in Seller's catalogs, brochures, technical bulletins and other documents regarding the Products. The Products, including but not limited to, hose, tubing or couplings, may fail due to the use or conveyance of substances at elevated or lowered temperature or at excessive pressure, the conveyance of abrasive, injurious, flammable, explosive, or damaging substances.

Hose or tubing used in bent configurations will be subjected to increased abrasion. Hose clamps or couplings may loosen after initial installations and all sections of hose and tubing including connections, couplings, clamps, conductivity and bonding should be inspected frequently, regularly, consistently, and should be replaced, adjusted or re-tightened for the avoidance of leakage, for the prevention of injuries or damages, and for general safety purposes. Except as indicated in its Limited Warranty, Seller shall not be liable or responsible for direct or indirect injuries or damages caused by or attributed to the failure or malfunction of any Products sold or distributed by it.

Purchasers or users of the Products should frequently and consistently undertake inspections and protective measures with respect to the use and application of Products, which should include the examination of tube and cover, conditions of the hose or tubing, and the identification, repair or replacement of sections showing cracking, blistering, separations, internal and external abrasions, leaking or slipped couplings or connections and make proper proof tests.

Limited Warranty

The Products sold or distributed by Seller are warranted to its customers to be free from defects in material and workmanship at the time of shipment by us, subject to the following provisions. ALL WARRANTY CLAIMS SHALL BE MADE WITHIN SIX (6) MONTHS AFTER SELLER SHIPPED THE PRODUCTS. SELLER'S LIABILITY HEREUNDER IS LIMITED AT SELLER'S EXCLUSIVE DISCRETION, TO 1) THE PURCHASE PRICE OF ANY PRODUCTS PROVIDING DEFECTIVE; 2) REPAIR OF ANY DEFECTIVE PRODUCT OR PART THEREOF; OR 3) REPLACEMENT OF ANY DEFECTIVE PRODUCT OR PART UPON ITS AUTHORIZED RETURN TO SELLER.

THIS WARRANTY IS IN LIEU OF AND EXCLUDES ALL OTHER WARRANTIES, EXPRESSED, IMPLIED, STATUTORY, OR OTHERWISE CREATED UNDER APPLICABLE LAW INCLUDING, BUT NOT LIMITED TO, THE WARRANTY OF MERCHANTABILITY AND THE WARRANTY OF FITNESS FOR A PARTICULAR PURPOSE. IN NO EVENT SHALL SELLER OR THE MANUFACTURER OF THE PRODUCT BE LIABLE FOR SPECIAL, INCIDENTAL, OR CONSEQUENTIAL DAMAGES INCLUDING LOSS OF PROFITS, WHETHER OR NOT CAUSED BY OR RESULTING FROM THE NEGLIGENCE OF SELLER AND/OR THE MANUFACTURER OF THE PRODUCT, UNLESS SPECIFICALLY PROVIDED HEREIN. IN ADDITION, THIS WARRANTY SHALL NOT APPLY TO ANY PRODUCTS OR PORTIONS THEREOF WHICH HAVE BEEN SUBJECTED TO ABUSE, MISUSE, IMPROPER INSTALLATION, MAINTENANCE, OR OPERATION, ELECTRICAL FAILURE OR ABNORMAL CONDITIONS, AND TO PRODUCTS WHICH HAVE BEEN TAMPERED WITH, ALTERED, MODIFIED, REPAIRED, REWORKED BY ANYONE NOT APPROVED BY SELLER, OR USED IN ANY MANNER INCONSISTENT WITH THE PROVISIONS OF THE "CAUTIONARY STATEMENT" ABOVE OR ANY INSTRUCTIONS OR SPECIFICATIONS PROVIDED WITH OR FOR THE PRODUCT.

10/2009

Because we continually examine ways to improve our products, we reserve the right to alter specifications or discontinue products without prior notice.

Cautionary Statement

All Products sold and distributed by Kuriyama of America, Inc. are in the nature of commodities and they are sold by published specifications and not for particular purposes, uses or applications. Purchaser shall first determine their suitability for the intended purposes, uses or applications and shall either conduct its own engineering studies or tests, or retain qualified engineers, consultants or testing laboratories and consult with them before determining the proper use, suitability or propriety of the merchandise or Products for the intended purposes, uses or applications.

Kuriyama of America, Inc. ("Seller") does not recommend the Products for any particular purpose, use or application, and the Purchaser or user thereof shall assume full responsibility for the suitability, propriety, use and application of the Products. Purchaser shall follow all instructions contained in Seller's catalogs, brochures, technical bulletins and other documents regarding the Products. The Products, including but not limited to, hose, tubing or couplings, may fail due to the use or conveyance of substances at elevated or lowered temperatures or at excessive pressure, the conveyance of abrasive, injurious, flammable, explosive or damaging substances.

Hose or tubing used in bent configurations will be subjected to increased abrasion. Hose clamps or couplings may loosen after initial installation and all sections of hose and tubing including connections, couplings, clamps, conductivity and bonding should be inspected frequently, regularly and consistently, and should be replaced, adjusted or re-tightened for the avoidance of leakage, for the prevention of injuries or damages, and for general safety purposes. Except as indicated in its Limited Warranty, Seller shall not be liable or responsible for direct or indirect injuries or damages caused by or attributed to the failure or malfunction of any Products sold or distributed by it.

Purchasers or users of the Products should frequently and consistently undertake inspections and protective measures with respect to the use and application of Products, which should include the examination of tube and cover, conditions of the hose or tubing, and the identification, repair or replacement of sections showing cracking, blistering, separations, internal and external abrasions, leaking or slipped couplings or connections and make proper proof tests.

Limited Warranty

The Products sold or distributed by Seller are warranted to its customers to be free from defects in material and workmanship at the time of shipment by us, subject to the following provisions. ALL WARRANTY CLAIMS SHALL BE MADE WITHIN SIX (6) MONTHS AFTER SELLER SHIPPED THE PRODUCTS. SELLER'S LIABILITY HEREUNDER IS LIMITED AT SELLER'S EXCLUSIVE DISCRETION, TO 1) THE PURCHASE PRICE OF ANY PRODUCTS PROVING DEFECTIVE; 2) REPAIR OF ANY DEFECTIVE PRODUCT OR PART THEREOF; OR 3) REPLACEMENT OF ANY DEFECTIVE PRODUCT OR PART UPON ITS AUTHORIZED RETURN TO SELLER.

THIS WARRANTY IS IN LIEU OF AND EXCLUDES ALL OTHER WARRANTIES, EXPRESSED, IMPLIED, STATUTORY, OR OTHERWISE CREATED UNDER APPLICABLE LAW INCLUDING, BUT NOT LIMITED TO, THE WARRANTY OF MERCHANTABILITY AND THE WARRANTY OF FITNESS FOR A PARTICULAR PURPOSE. IN NO EVENT SHALL SELLER OR THE MANUFACTURER OF THE PRODUCT BE LIABLE FOR SPECIAL, INCIDENTAL, OR CONSEQUENTIAL DAMAGES, INCLUDING LOSS OF PROFITS, WHETHER OR NOT CAUSED BY OR RESULTING FROM THE NEGLIGENCE OF SELLER AND/OR THE MANUFACTURER OF THE PRODUCT, UNLESS SPECIFICALLY PROVIDED HEREIN. IN ADDITION, THIS WARRANTY SHALL NOT APPLY TO ANY PRODUCTS OR PORTIONS THEREOF WHICH HAVE BEEN SUBJECTED TO ABUSE, MISUSE, IMPROPER INSTALLATION, MAINTENANCE, OR OPERATION, ELECTRICAL FAILURE OR ABNORMAL CONDITIONS, AND TO PRODUCTS WHICH HAVE BEEN TAMPERED WITH, ALTERED, MODIFIED, REPAIRED, REWORKED BY ANYONE NOT APPROVED BY SELLER, OR USED IN ANY MANNER INCONSISTENT WITH THE PROVISIONS OF THE "CAUTIONARY STATEMENT" ABOVE OR ANY INSTRUCTIONS OR SPECIFICATIONS PROVIDED WITH OR FOR THE PRODUCT. 05/03/21 REV

Distributed by:



CORPORATE OFFICE

150 N Martingale Road, Suite 900, Schaumburg, IL 60173-5335
Phone: (847) 755-0360 • Toll-free Fax: (800) 800-0320
International Fax: (847) 885-0996



kuriyama.com

sales@kuriyama.com



Piranha Hose Products Inc. is ISO 9001 certified. Quality management system is certified to ISO 9001:2015 by Intertek
The trademarks contained in this publication are trademarks of Kuriyama of America, Inc.

©2024 Kuriyama of America, Inc. All rights reserved.

CONTACT OUR SALES/WAREHOUSE LOCATIONS BELOW WHICH SERVE YOUR AREA

CENTRAL DISTRIBUTION CENTER

KURIYAMA OF AMERICA, INC.

14200 Commerce Court

Huntley, IL 60142

(847) 755-0360

(800) 800-0320

kuriyama.com sales@kuriyama.com

SOUTHWEST WAREHOUSE

KURIYAMA OF AMERICA, INC.

— HOUSTON

200 Portwall Street, Suite 100

Houston, TX 77029

(713) 674-8212 OR (800) 501-6808

(713) 674-5214 OR (800) 800-5214

sales@kuriyama.com

WESTERN WAREHOUSE

KURIYAMA OF AMERICA, INC.

— RENO

12910 Old Virginia Road, Suite 100

Reno, NV 89521

(562) 941-4507

(562) 941-8940 OR (800) 326-8940

sales@kuriyama.com

SOUTHEAST WAREHOUSE

FORTNEY SALES CO., INC.

4221 Cantrell Road NW

Acworth, GA 30101

(770) 427-6528

(770) 423-9249 OR (800) 423-9249

FortneySales.com sales@fortneysales.com

EASTERN WAREHOUSE

EASTERN RUBBER & PLASTICS CO., INC.

100 Goldman Dr.

Plumsted Industrial Park

Cream Ridge, NJ 08514

(609) 758-0100

(609) 758-0102 OR (800) 445-7138

EasternRubber.com sales@easternrubber.com

IN CANADA

KURI TEC CORPORATION

140 Roy Boulevard

Brantford, ON, Canada N3R 7K2

(519) 753-6717

(519) 753-7737

Kuritec.com sales@kuritec.com

IN MEXICO

KURIYAMA DE MÉXICO S DE RL DE CV

Av Jose Palomo Martinez No 520-20 Bodega 5

Parque Industrial Omolap

Apodaca, N.I. CP:66633, México

(81) 1086-1870 0 71

Kuriyama.com.mx Kuriyama.com

servicioalcliente@kuriyama.com



MADE IN THE
USA

Printed in U. S. A.

KPHPCA0424