

 **ALFAGOMMA®**

NEW

STAPLELOCK

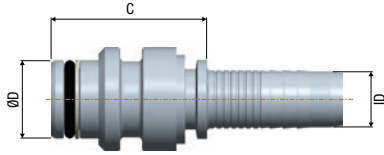
Mining Fittings



KURIYAMA
OF AMERICA, INC.

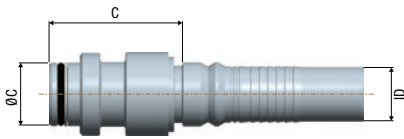
kuriyama.com

EDITION 0123



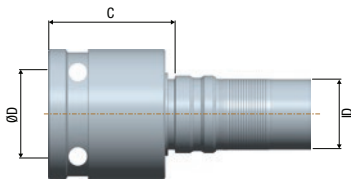
Rapid Staplelok Male

Part Number	Dash Size	Hose ID		F Thread		C Cut-Off Factor (mm)	Weight (lbs/each)
		(in)	(mm)	Dash Size	Size OD (mm)		
A-0404-SLMS	04	1/4	6.4	04	10	35.8	0.07
A-0606-SLMS	06	3/8	9.5	06	14	35.8	0.12
A-0808-SLMS	08	1/2	12.7	08	18	36.1	0.18
A-1212-SLMS	12	3/4	19.0	12	24	37.6	0.29
A-1616-SLMS	16	1	25.4	16	31	49.4	0.66
A-2020-SLMS	20	1 1/4	31.8	20	38	45.1	0.82
A-3232-SLMS	32	2	50.8	32	56	51.0	3.21



Super Rapid Staplelok Male

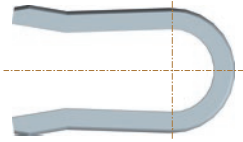
Part Number	Dash Size	Hose ID		F Thread		C Cut-Off Factor (mm)	Weight (lbs/each)
		(in)	(mm)	Dash Size	Size OD (mm)		
X-1212-SSLM	12	3/4	19.0	12	22	47.0	0.45
X-1616-SSLM	16	1	25.4	16	31	57.6	0.92
X-2424-SSLM	24	1 1/2	38.1	24	44	66.8	2.21
X-3232-SSLM	32	2	50.8	32	50	65.4	2.57



Super Rapid Staplelok Female

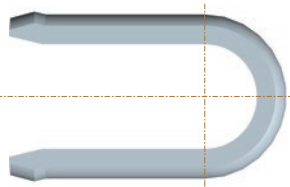
Part Number	Dash Size	Hose ID		F Thread		C Cut-Off Factor (mm)	Weight (lbs/each)
		(in)	(mm)	Dash Size	Size ID (mm)		
X-3232-SSLF	32	2	50.8	32	50	94.0	7.59

Because we continually examine ways to improve our products, we reserve the right to alter specifications or discontinue products without prior notice.



Rapid Staplelok Staple, D Type, Stainless Steel

Part Number	Dash Size	Hose ID		Weight (lbs/each)
		(in)	(mm)	
RS-SS-04D	04	1/4	6.4	0.03
RS-SS-06D	06	3/8	9.5	0.03
RS-SS-08D	08	1/2	12.7	0.04
RS-SS-12D	12	3/4	19.0	0.04
RS-SS-16D	16	1	25.4	0.12
RS-SS-20D	20	1 1/4	31.8	0.14
RS-SS-32D	32	2	50.8	0.17



Super Rapid Staplelok Staple, D Type, Stainless Steel

Part Number	Dash Size	Hose ID		Weight (lbs/each)
		(in)	(mm)	
SRS-SS-12D	12	3/4	19.0	0.10
SRS-SS-16D	16	1	25.4	0.28
SRS-SS-24D	24	1 1/2	38.1	0.36
SRS-SS-32D	32	2	50.8	0.40

Because we continually examine ways to improve our products, we reserve the right to alter specifications or discontinue products without prior notice.

Cautionary Statement

All Products sold and distributed by Kuriyama of America, Inc. are in the nature of commodities and they are sold by published specifications and not for particular purposes, uses or applications. Purchaser shall first determine their suitability for the intended purposes, uses or applications and shall either conduct its own engineering studies or tests, or retain qualified engineers, consultants or testing laboratories and consult with them before determining the proper use, suitability or propriety of the merchandise or Products for the intended purposes, uses or applications.

Kuriyama of America, Inc. ("Seller") does not recommend the Products for any particular purpose, use or application, and the Purchaser or user thereof shall assume full responsibility for the suitability, propriety, use and application of the Products. Purchaser shall follow all instructions contained in Seller's catalogs, brochures, technical bulletins and other documents regarding the Products. The Products, including but not limited to, hose, tubing or couplings, may fail due to the use or conveyance of substances at elevated or lowered temperatures or at excessive pressure, the conveyance of abrasive, injurious, flammable, explosive or damaging substances.

Hose or tubing used in bent configurations will be subjected to increased abrasion. Hose clamps or couplings may loosen after initial installation and all sections of hose and tubing including connections, couplings, clamps, conductivity and bonding should be inspected frequently, regularly and consistently, and should be replaced, adjusted or re-tightened for the avoidance of leakage, for the prevention of injuries or damages, and for general safety purposes. Except as indicated in its Limited Warranty, Seller shall not be liable or responsible for direct or indirect injuries or damages caused by or attributed to the failure or malfunction of any Products sold or distributed by it.

Purchasers or users of the Products should frequently and consistently undertake inspections and protective measures with respect to the use and application of Products, which should include the examination of tube and cover, conditions of the hose or tubing, and the identification, repair or replacement of sections showing cracking, blistering, separations, internal and external abrasions, leaking or slipped couplings or connections and make proper proof tests.

Limited Warranty

The Products sold or distributed by Seller are warranted to its customers to be free from defects in material and workmanship at the time of shipment by us, subject to the following provisions. ALL WARRANTY CLAIMS SHALL BE MADE WITHIN SIX (6) MONTHS AFTER SELLER SHIPPED THE PRODUCTS. SELLER'S LIABILITY HEREUNDER IS LIMITED AT SELLER'S EXCLUSIVE DISCRETION, TO 1) THE PURCHASE PRICE OF ANY PRODUCTS PROVING DEFECTIVE; 2) REPAIR OF ANY DEFECTIVE PRODUCT OR PART THEREOF; OR 3) REPLACEMENT OF ANY DEFECTIVE PRODUCT OR PART UPON ITS AUTHORIZED RETURN TO SELLER.

THIS WARRANTY IS IN LIEU OF AND EXCLUDES ALL OTHER WARRANTIES, EXPRESSED, IMPLIED, STATUTORY, OR OTHERWISE CREATED UNDER APPLICABLE LAW INCLUDING, BUT NOT LIMITED TO, THE WARRANTY OF MERCHANTABILITY AND THE WARRANTY OF FITNESS FOR A PARTICULAR PURPOSE. IN NO EVENT SHALL SELLER OR THE MANUFACTURER OF THE PRODUCT BE LIABLE FOR SPECIAL, INCIDENTAL, OR CONSEQUENTIAL DAMAGES, INCLUDING LOSS OF PROFITS, WHETHER OR NOT CAUSED BY OR RESULTING FROM THE NEGLIGENCE OF SELLER AND/OR THE MANUFACTURER OF THE PRODUCT, UNLESS SPECIFICALLY PROVIDED HEREIN. IN ADDITION, THIS WARRANTY SHALL NOT APPLY TO ANY PRODUCTS OR PORTIONS THEREOF WHICH HAVE BEEN SUBJECT TO ABUSE, MISUSE, IMPROPER INSTALLATION, MAINTENANCE, OR OPERATION, ELECTRICAL FAILURE OR ABNORMAL CONDITIONS, AND TO PRODUCTS WHICH HAVE BEEN TAMPERED WITH, ALTERED, MODIFIED, REPAIRED, REWORKED BY ANYONE NOT APPROVED BY SELLER, OR USED IN ANY MANNER INCONSISTENT WITH THE PROVISIONS OF THE "CAUTIONARY STATEMENT" ABOVE OR ANY INSTRUCTIONS OR SPECIFICATIONS PROVIDED WITH OR FOR THE PRODUCT.

05/03/21 REV

Distributed by:



KURIYAMA
OF AMERICA, INC.

HEADQUARTERS, SALES OFFICE AND WAREHOUSE

360 E. State Parkway, Schaumburg, IL 60173-5335
Phone: (847) 755-0360 • Toll-free Fax: (800) 800-0320
International Fax: (847) 885-0996



kuriyama.com



sales@kuriyama.com



The trademarks contained in this publication are trademarks of Kuriyama of America, Inc.

CONTACT OUR SALES/WAREHOUSE LOCATIONS BELOW WHICH SERVE YOUR AREA

SOUTHWEST WAREHOUSE

KURIYAMA OF AMERICA, INC.

– HOUSTON

200 Portwall Street, Suite 100
HOUSTON, TX 77029

Phone: (713) 674-8212

Toll Free Phone: (800) 501-6808

FAX: (713) 674-5214

Toll Free FAX: (800) 800-5214

E-Mail: sales@kuriyama.com

WESTERN WAREHOUSE

KURIYAMA OF AMERICA, INC.

– SANTA FE SPRINGS

10749 SHOEMAKER AVENUE

SANTA FE SPRINGS, CA 90670-4039

Phone: (562) 941-4507

FAX: (562) 941-8940

Toll-Free FAX: (800) 326-8940

E-Mail: sales@kuriyama.com

SOUTHEAST WAREHOUSE

FORTNEY SALES CO., INC.

4221 Cantrell Road NW

Acworth, GA 30101

Phone: (770) 427-6528

FAX: (770) 423-9249

Toll Free FAX: (800) 423-9249

Web Site: www.fortneysales.com

E-Mail: sales@fortneysales.com

EASTERN WAREHOUSE

EASTERN RUBBER & PLASTICS CO., INC.

100 GOLDMAN DR.

PLUMSTED INDUSTRIAL PARK

CREAM RIDGE, NJ 08514

Phone: (609) 758-0100

FAX: (609) 758-0102

Toll Free FAX: (800) 445-7138

Web Site: www.easternrubber.com

E-Mail: sales@easternrubber.com

IN MEXICO:

KURIYAMA DE MÉXICO S DE RL DE CV

AV JOSE PALOMO MARTINEZ NO 520-20 BODEGA 5

PARQUE INDUSTRIAL OMOLAP

APODACA, N.L. CP:66633, MÉXICO

Telefonos: (81) 1086-1870 0 71

Internet: www.kuriyama.com.mx

www.kuriyama.com

Correo Electronico: ventas@kuriyama.com